

REFERENCES

- Alley, W. M. (1984). On the Treatment of Evapotranspiration, Soil Moisture Accounting, and Aquifer Recharge in Monthly Water Balance Models. *Water Resources Research*, 20(8), 1137–1149.
- Bandara, C. M. M., & Wickramagamage, P. (2004). *Climate change and its impact on upper watershed of the hill country of Sri Lanka*. Climate change secretariat working paper. Environmental economics and global affairs division, Ministry of environment and natural resources, Battaramulla, Sri Lanka.
- Basnayake, B. (2008). Climate change: present and future perspective of Sri Lanka. Available at Meteorological Department of Sri Lanka Website: [Http://www.Meteo. Gov. Lk](http://www.Meteo.Gov.Lk).
- Basnayake, B., Punyawardena, B. V. R., & Vithanage, J. C. (2003). An investigation of ambient air temperature trends at Hambantota–Angunakolapelassa and Nuwara Eliya-Thalawakele. *Proceedings of the 59th Annual Session of Sri Lanka Association for the Advancement of Science (SLASS). Section E, 1*, 194.
- Basnayake, B., & Vithanage, J. C. (2004a). Future climate scenarios of rainfall and temperature for Sri Lanka. *Proceedings of the 60th Annual Session of Sri Lanka Association for the Advancement of Science (SLASS). Section E, 1*, 222.
- Basnayake, B., & Vithanage, J. C. (2004b). Rainfall change scenarios for Sri Lanka under the anticipated climate change. In *Proceedings of the International*

Conference on Sustainable Water Resources Management in the Changing Environment of the Monsoon Region (Vol. 1).

- Beven, K. (1989). Changing ideas in hydrology — The case of physically-based models. *Journal of Hydrology*, 105(1–2), 157–172.
[http://doi.org/10.1016/0022-1694\(89\)90101-7](http://doi.org/10.1016/0022-1694(89)90101-7)
- Boughton, W. C. (1973). A mathematical catchment model for estimating runoff. *J. Hydrol.*, 7(3), 75–100.
- Chandrapala, L. (1996). Calculation of areal precipitation of Sri Lanka on district basis using Voronoi Tessalation Method. In *Proceedings of National Symposium on Climate Change, Central Environmental Authority, Colombo, Sri Lanka*.
- Chandrapala, L. (1996). Long term trends of rainfall and temperature in Sri Lanka. *Climate Variability and Agriculture, Abrol, YP; Gadgil, S.; Pant, GB (eds.). New Delhi, India: Narosa Publishing House, 153–162.*
- Chen, X., Chen, Y. D., & Xu, C. (2007). A distributed monthly hydrological model for integrating spatial variations of basin topography and rainfall. *Hydrological Processes*, 21(2), 242–252. <http://doi.org/10.1002/hyp.6187>
- Clarke, R. T. (1973). Mathematical models in hydrology. *FAO Irrigation and Drainage Paper*.
- Clark, M. J., Gregory, K. J., & Gurnell, A. M. (1987). *Horizons in Physical Geography*. Rowman & Littlefield.
- Cruz, R. V., Harasawa, H., Lal, M., Wu, S., Anokhin, Y., Punsalmaa, B., ... Huu Ninh, N. (2007). *Impacts, Adaptation and Vulnerability. Contribution of Working Group II to the*. Cambridge University Press: Cambridge, UK.

- De Silva, C. S. (2006). Impacts of climate change on water resources in Sri Lanka. In *32nd WEDC International Conference*.
- Dharmasena, G. T., Chandradasa, H. V. D. ., & Priyani, D. (1992). Mathematical Models for Streamflow Simulation in Sri Lankan Rivers. *Annual Sessions of the Institution of Engineers Sri Lanka, 1*, 26–32.
- Electricity Master Plan. (1987). *Master Plan For The Electricity Supply of Sri Lanka* (Vol. S-1). Colombo, Sri Lanka: Ceylon Electricity Board.
- Eriyagama, N., Smakhtin, V., Chandrapala, L., & Fernando, K. (2010). Impacts of climate change on water resources and agriculture in Sri Lanka: a review and preliminary vulnerability mapping. *IWMI International Water Management Institute*, (IWMI Research 135), 51. <http://doi.org/10.3910/2010.211>
- Fish, R. E. (2011). *Using Water Balance Models to Approximate the Effects of Climate Change on Spring Catchment Discharge: Mt. Hanang, Tanzania*. Michigan Technological University.
- Gan, T.-Y. (1988). Applications of scientific modeling of hydrologic responses from hypothetical small catchments to assess a complex conceptual rainfall-runoff model.
- Gleick, P. H. (1986). Methods for evaluating the regional hydrologic impacts of global climatic changes. *Journal of Hydrology*, 88(1–2), 97–116. [http://doi.org/10.1016/0022-1694\(86\)90199-X](http://doi.org/10.1016/0022-1694(86)90199-X)
- Gleick, P. H. (1987). The development and testing of a water balance model for climate impact assessment: Modeling the Sacramento Basin. *Water Resources Research*, 23(6), 1049–1061. <http://doi.org/10.1029/WR023i006p01049>

- Guo, S. (1992). Monthly water balance models for climate change impact study. In *In Proceedings of First National Post-doctoral Conference* (pp. 2034–2037). Beijing.
- Guo ShengLian, Wang JinXing, & Yang Jin. (2001). A semi-distributed hydrological model and its application in a macroscale basin in China. (pp. 167–174). Presented at the IAHS Publication 270, IAHS Press.
- Guo, S. L. (1995). Impact of climatic change on hydrological balance and water resource systems in the Dongjiang Basin, China.
- Guo, S., Wang, J., Xiong, L., Ying, A., & Li, D. (2002). A macro-scale and semi-distributed monthly water balance model to predict climate change impacts in China. *Journal of Hydrology*, 268(1–4), 1–15. [http://doi.org/10.1016/S0022-1694\(02\)00075-6](http://doi.org/10.1016/S0022-1694(02)00075-6)
- Haan, C. T. (1972). A water yield model for small watersheds. *Water Resources Research*, 8(1), 58–69. <http://doi.org/10.1029/WR008i001p00058>
- Herath, S., & Ratnayake, U. (2004). Monitoring rainfall trends to predict adverse impacts—a case study from Sri Lanka (1964–1993). *Global Environmental Change*, 14, 71–79.
- Hsu, K., Gupta, H. V., & Sorooshian, S. (1995). Artificial Neural Network Modeling of the Rainfall-Runoff Process. *Water Resources Research*, 31(10), 2517–2530.
- Hughes, D. A. (1982). Conceptual catchment model parameter transfer studies using monthly data from the southern Cape coastal lakes region. *Hydrological Research Unit, Rhodes University, Grahamstown., Report 1/82.*

- Hughes, D. A. (1989). Estimation of the parameters of an isolated event conceptual model from physical catchment characteristics. *Hydrological Sciences Journal*, 34(5), 539–557. <http://doi.org/10.1080/02626668909491361>
- Hughes, D. A., & Metzler, W. (1998). Assessment of three monthly rainfall-runoff models for estimating the water resource yield of semiarid catchments in Namibia. *Hydrological Sciences Journal*, 43(2), 283–297. <http://doi.org/10.1080/02626669809492122>
- Hydrological Annuals. (2009). *Ministry of Irrigation and Water Management. Hydrological Annuals 2000-2009*. Sri Lanka: Hydrology Division, Irrigation Department.
- IPCC. (2007). *Climate Change 2007: impacts, adaptation and vulnerability: contribution of Working Group II to the fourth assessment report of the Intergovernmental Panel on Climate Change*. UK: Cambridge University Press.
- Islam, S. U., & Rehman, N. (2004). Assessment of Future Change in Temperature and Precipitation over Pakistan. *Simulated by PRECIS RCM for A2 Scenario*). Available at the Hadley Centre, UK Website: [Http://precis.metoffice.com/docs/final-Results-Monthly_siraj.Ppt](http://precis.metoffice.com/docs/final-Results-Monthly_siraj.Ppt), 1.
- Jayatillake, H. M., Chandrapala, L., Basnayake, B., & Dharmaratne, G. H. P. (2005). Water resources and climate change. In *Proceedings of Workshop on Sri Lanka National Water Development Report*. Wijesekera, N. TS.
- Karpouzou, D. K., Baltas, E. A., Kavalieratou, S., & C. Babajimopoulos. (2011). A hydrological investigation using a lumped water balance model: the Aison

- River Basin case (Greece). *Water and Environment Journal*, 25(3), 297–307.
<http://doi.org/10.1111/j.1747-6593.2010.00222.x>
- Krause, P., Boyle, D. P., & Bäse, F. (2005). Comparison of different efficiency criteria for hydrological model assessment. *Adv. Geosci.*, 5, 89–97.
<http://doi.org/10.5194/adgeo-5-89-2005>
- Krzysztofowicz, R., & Diskin, M. H. (1978). A moisture-accounting watershed model for single-storm events based on time—Area concept. *Journal of Hydrology*, 37(3–4), 261–294. [http://doi.org/10.1016/0022-1694\(78\)90020-3](http://doi.org/10.1016/0022-1694(78)90020-3)
- Kuczera, G. (1982). On the relationship between the reliability of parameter estimates and hydrologic time series data used in calibration. *Water Resources Research*, 18(1), 146–154.
<http://doi.org/10.1029/WR018i001p00146>
- Kunstmann, H., Heckl, A., & Rimmer, A. (2006). Physically based distributed hydrological modelling of the Upper Jordan catchment and investigation of effective model equations. *Advances in Geosciences*, 9, 123–130.
- Langford, K. J., Duncan, H. P., & Heeps, D. P. (1978). Forecasting streamflow and storage using a soil dryness index model. *Melbourne and Metrop. Board of Works, Melbourne, Victoria*.
- Leavesley, G. H. (1994). Modeling the effects of climate change on water resources - a review. *Climatic Change*, 28(1-2), 159–177.
<http://doi.org/10.1007/BF01094105>
- Legates, D. R., & McCabe Jr, G. J. (1999). Evaluating the use of “goodness-of-fit” measures in hydrologic and hydroclimatic model validation. *Water Resources Research*, 35(1), 233–241.

- Makhlouf, Z., & Michel, C. (1994). A two-parameter monthly water balance model for French watersheds. *Journal of Hydrology*, *162*(3–4), 299–318.
[http://doi.org/10.1016/0022-1694\(94\)90233-X](http://doi.org/10.1016/0022-1694(94)90233-X)
- Mata-Lima, H. (2011). Evaluation of the objective functions to improve production history matching performance based on fluid flow behaviour in reservoirs. *Journal of Petroleum Science and Engineering*, *78*(1), 42–53.
<http://doi.org/10.1016/j.petrol.2011.05.015>
- McCabe, G. J. (2007). *A monthly water-balance model driven by a graphical user interface*. U.S. Geological Survey,.
- Mimikou, M., Kouvopoulos, Y., Cavadias, G., & Vayianos, N. (1991). Regional hydrological effects of climate change. *Journal of Hydrology*, *123*(1–2), 119–146. [http://doi.org/10.1016/0022-1694\(91\)90073-Q](http://doi.org/10.1016/0022-1694(91)90073-Q)
- Moreda, F. (1999). *Conceptual rainfall-runoff models for different time steps with special consideration for semi-arid and arid catchments*. Laboratory of Hydrology Faculty of Applied Sciences, VUB Pleinlaan, 2, 1050.
- Mouelhi, S., Michel, C., Perrin, C., & Andréassian, V. (2006). Stepwise development of a two-parameter monthly water balance model. *Journal of Hydrology*, *318*(1–4), 200–214. <http://doi.org/10.1016/j.jhydrol.2005.06.014>
- Nan, Y., Bao-hui Men, & Chun-kun, L. (2011). Impact Analysis of Climate Change on Water Resources. *Procedia Engineering*, *24*, 643–648.
<http://doi.org/10.1016/j.proeng.2011.11.2710>
- Palmer, W. C. (1965). Meteorologic drought Research Paper. *US Weather Bureau*, (45), 58.

- Panagoulia, D., & Dimou, G. (1997). Linking space–time scale in hydrological modelling with respect to global climate change: Part 1. Models, model properties, and experimental design. *Journal of Hydrology*, *194*(1–4), 15–37. [http://doi.org/10.1016/S0022-1694\(96\)03220-9](http://doi.org/10.1016/S0022-1694(96)03220-9)
- Penman, H. L. (1948). Natural Evaporation from Open Water, Bare Soil and Grass. *Proceedings of the Royal Society of London A: Mathematical, Physical and Engineering Sciences*, *193*(1032), 120–145. <http://doi.org/10.1098/rspa.1948.0037>
- Pilgrim, D. H. (1975). Model evaluation, testing and parameter estimation in hydrology, in *Prediction in Catchment Hydrology*.
- Pilgrim, D. H., & Cordery, I. (1975). Rainfall Temporal Patterns for Design Floods. *Journal of the Hydraulics Division*, *101*(1), 81–95.
- Pitman, W. V. (1973). A mathematical model for generating monthly river flows from meteorological data in South Africa. *Hydrological Research Unit, University of the Witwatersrand, Johannesburg.*, 2/73.
- Ponrajah, A. J. P. (1984). *Design of Irrigation Headwork for small catchments* (2nd ed.). Colombo, Sri Lanka: Irrigation Department.
- Powell, M. J. D. (1965). A Method for Minimizing a Sum of Squares of Non-Linear Functions Without Calculating Derivatives. *The Computer Journal*, *7*(4), 303–307. <http://doi.org/10.1093/comjnl/7.4.303>
- Premalal, K. (2009). Weather and Climate Trends, Climate Controls and Risks in Sri Lanka. In *Presentation made at the Sri Lanka Monsoon Forum*.

- Premalal, K. H. M. S. (2009, September). *Climate Change in Sri Lanka, Proceedings of the 1st National Conference on Climate Change & Its Impacts on Agriculture, Forestry and Water*. Kandy, Sri Lanka.
- Roberts, P. J. T. (1978). A Comparison of the Performance of Selected Conceptual Models of the Rainfall-runoff Process in Small Semi-arid Catchments Near Grahamstown. *Rhodes University, Department of Geography, Hydrological Research Unit., Report 1/78*.
- Roberts, P. J. T. (1979). Model FLEXIFIT: A conceptual rainfallrunoff model for the extension of monthly runoff records. *Dept. of Environment Affairs, Hydrological Research Institute, Tech. Report TR98., Report 1/78*.
- Rupa Kumar, K., Sahai, A. K., Krishna Kumar, K., Patwardhan, S. K., Mishra, P. K., Revadekar, J. V., ... Pant, G. B. (2006). High-resolution climate change scenarios for India for the 21st century. *Current Science*, 90(3), 334–345.
- Salas, J. D., Tabios III, G. Q., & Obeysekera, J. T. B. (1986). Seasonalmodel forwatershed simulation, Users Manual, Dept. of Civil Engineering. *Colorado State University*.
- Schatzman, M. (2002). *Numerical Analysis: A Mathematical Introduction*. Clarendon Press.
- Shantha, W. W. A., & Jayasundara, J. (2005). Study on changes of rainfall in the Mahaweli upper watershed in Sri Lanka due to climatic changes and develop a correction model for global warming. In *International Symposium on the Stabilisation of Greenhouse Gas Concentrations*. Hadley Centre, Met Office, Exeter, UK.

- Shaw, E. M., Beven, K. J., Chappell, N. A., & Lamb, R. (2010). *Hydrology in Practice, Fourth Edition*. CRC Press.
- Singh, V. P. (1989). *Hydrologic System, Vol. 2. Watershed Modelling*. Prentice Hall, Englewood Cliffs, New Jersey., 2.
- Singh, V. P. (1995). *Computer Models of Watershed Hydrology*. Water Resources Publications, Littleton, Colorado.
- Singh, V. P., & Chowdhury, P. K. (1986). Comparing Some Methods of Estimating Mean Areal Rainfall. *JAWRA Journal of the American Water Resources Association*, 22(2), 275–282. <http://doi.org/10.1111/j.1752-1688.1986.tb01884.x>
- Snyder, F. F. (1963). A water yield model derived from monthly runoff data. *International Association of Scientific Hydrology*, (63), 18–30.
- Subramanya, K. (1994). *Engineering Hydrology*. Tata McGraw-Hill Education.
- Sudheer, K. P., Chaubey, I., Garg, V., & Migliaccio, K. W. (2007). Impact of time-scale of the calibration objective function on the performance of watershed models. *Hydrological Processes*, 21(25), 3409–3419.
- Thomas, H. A. (1981). Improved methods for national water assessment. Report WR15249270. *US Water Resource Council, Washington, DC*.
- Thornthwaite, C. W. (1948). An Approach toward a Rational Classification of Climate. *Geographical Review*, 38(1), 55–94. <http://doi.org/10.2307/210739>
- Thornthwaite, C. W., & Mather, J. R. (1957). Instructions and tables for computing potential evapotranspiration and the water balance.

- Vandewiele, G. L., & Elias, A. (1995). Monthly water balance of ungauged catchments obtained by geographical regionalization. *Journal of Hydrology*, 170(1–4), 277–291. [http://doi.org/10.1016/0022-1694\(95\)02681-E](http://doi.org/10.1016/0022-1694(95)02681-E)
- Vandewiele, G. L., & Ni-Lar-Win. (1998). Monthly water balance models for 55 basins in 10 countries. *Hydrological Sciences Journal*, 43(5), 687–699. <http://doi.org/10.1080/02626669809492166>
- Vandewiele, G. L., Xu, C.-Y., & Ni-Lar-Win. (1992). Methodology and comparative study of monthly water balance models in Belgium, China and Burma. *Journal of Hydrology*, 134(1–4), 315–347. [http://doi.org/10.1016/0022-1694\(92\)90041-S](http://doi.org/10.1016/0022-1694(92)90041-S)
- Wang, Q. J., Pagano, T. C., Zhou, S. L., Hapuarachchi, H. A. P., Zhang, L., & Robertson, D. E. (2011). Monthly versus daily water balance models in simulating monthly runoff. *Journal of Hydrology*, 404(3–4), 166–175. <http://doi.org/10.1016/j.jhydrol.2011.04.027>
- Wanniarachchi, S. S. (2013). Mathematical Modelling of Watershed Runoff Coefficient for Reliable Estimations to meet the Future Challenges of Water Resources Development in Sri Lanka. *Journal of the Institution of Engineers, Sri Lanka*, XXXV(02), 59–68.
- Wijeratne, M. A., Anandacoomaraswamy, A., Amaratunge, M. K. S. L. D., Ratnasiri, J., Basnayake, B. R. S. B., & Kalra, N. (2009). Assessment of impact of climate change on productivity of tea (*camellia sinensis* L.) plantations in Sri Lanka. *Journal of the National Science Foundation of Sri Lanka*, (35 (2)), 119–126.

- Wijsekera, N. T. . (1993). *Conceptual model structure development for streamflow simulation in the tropics*. Tokyo, Japan.
- Wijsekera, N. T. S. (2000). Parameter Estimation in Watershed Model: A Case Study Using Gin Ganga Watershed. *Annual Sessions of the Institution of Engineers Sri Lanka, 1(Part B)*, 26–32.
- Wijsekera, N. T. S. (2010). Surface Water Resources and Climate Change. In *Proceedings of the National Forum on Water Research ‘Identification of Gaps and Priorities* (pp. 68–98). Colombo, Sri Lanka.
- Wijsekera, N. T. S., & Perera, K. R. J. (2010). Identification of the Spatial Variability of Runoff Coefficients of Three Wet Zone Watersheds of Sri Lanka for Efficient River Basin Planning. *3rd International Perspective on Current & Future State of Water Resources & The Environment, Environmental & Water Resources Institute (EWRI) of American Society of Civil Engineers, Chennai, India*, 3–13.
- Wijsekera, N. T. S., & Rajapakse, R. L. H. L. (2014a). Mathematical modelling of watershed wetland crossings for flood mitigation and groundwater enhancement – case of the Attanagalu Oya river basin. *Engineer: Journal of the Institution of Engineers, Sri Lanka*, 46(3).
<http://doi.org/10.4038/engineer.v46i3.6785>
- Wijsekera, N. T. S., & Rajapakse, R. L. H. L. (2014b). Mathematical modelling of watershed wetland crossings for flood mitigation and groundwater enhancement – case of the Attanagalu Oya river basin. *Engineer: Journal of the Institution of Engineers, Sri Lanka*, 46(3).
<http://doi.org/10.4038/engineer.v46i3.6785>

- WMO. (1974). *Guide to Hydrometeorological Practices* (3rd ed.). Geneva: World Meteorological Organization.
- WMO. (2008). *Guide to Hydrological Practices: Volume. I: Hydrology—From Measurement to Hydrological Information* (6th ed., Vol. I). Geneva, Switzerland: World Meteorological Organization.
- WMO. (2009). *Guide to Hydrological Practices: Volume. II: Management of Water Resources and Application of Hydrological Practices*. (6th ed., Vol. 11). Geneva, Switzerland: World Meteorological Organization.
- Xiong, L., & Guo, S. (1999). A two-parameter monthly water balance model and its application. *Journal of Hydrology*, 216(1–2), 111–123.
[http://doi.org/10.1016/S0022-1694\(98\)00297-2](http://doi.org/10.1016/S0022-1694(98)00297-2)
- Xu, C. (1997). Application of Water Balance Models to Different Climatic Regions in China for Water Resources Assessment. *Water Resources Management*, 11(1), 51–67. <http://doi.org/10.1023/A:1007945406728>
- Xu, C. (1999). Climate Change and Hydrologic Models: A Review of Existing Gaps and Recent Research Developments. *Water Resources Management*, 13(5), 369–382. <http://doi.org/10.1023/A:1008190900459>
- Xu, C. Y. (1992). Monthly water balance models in different climatic regions. *Vrije Universiteit, Brussels, Belgium*.
- Xu, C.-Y. (1999). Estimation of Parameters of a Conceptual Water Balance Model for Ungauged Catchments. *Water Resources Management*, 13(5), 353–368.
<http://doi.org/10.1023/A:1008191517801>

- Xu, C.-Y., & Singh, V. P. (1998). A Review on Monthly Water Balance Models for Water Resources Investigations. *Water Resources Management*, 12(1), 20–50. <http://doi.org/10.1023/A:1007916816469>
- Yin, A., & Guo, S. (1997). Uncertainty analysis of impact of climatic change on hydrology and water resource. Sustainability of Water Resource Under Increasing Uncertainty. In *Journal of Hydrology* (p. 240). [http://doi.org/10.1016/S0022-1694\(98\)00297-2](http://doi.org/10.1016/S0022-1694(98)00297-2)
- Zhang, G. P., & Savenije, H. H. G. (2005). Rainfall-runoff modelling in a catchment with a complex groundwater flow system: application of the Representative Elementary Watershed (REW) approach. *Hydrol. Earth Syst. Sci.*, 9(3), 243–261. <http://doi.org/10.5194/hess-9-243-2005>
- Zhao, R.-J. (1992). The Xinanjiang model applied in China. *Journal of Hydrology*, 135(1–4), 371–381.

APPENDIX-A

DATA CHECKING KELANI GANGA

Figure A- 1: S-Curve & D-Mass Curve Analysis for Kelani Ganga (1966-2014)

Figure A- 2: Streamflow Corresponding Monthly Rainfall for Kelani Ganga (1966-1990)

Figure A- 3: Streamflow Corresponding Monthly Rainfall for Kelani Ganga (1991-2014)

Figure A- 4: Monthly Rainfall, Streamflow and Evaporation for Kelani Ganga (1966-2014)

Figure A- 5: Monthly, Annual & Seasonal Runoff Coefficient for Kelani Ganga (1966-1990)

Figure A- 6: Monthly, Annual & Seasonal Runoff Coefficient for Kelani Ganga 1990-2014

Table A- 1: Parameter Optimization using MRAE for Kelani Ganga

Table A- 2: Parameter Optimization using Nash-Sutcliffe efficiency for Kelani Ganga

Table A- 3: Best Sets of Optimized Parameters for Kelani Ganga

APPENDIX A: DATA CHECKING KELANI GANGA

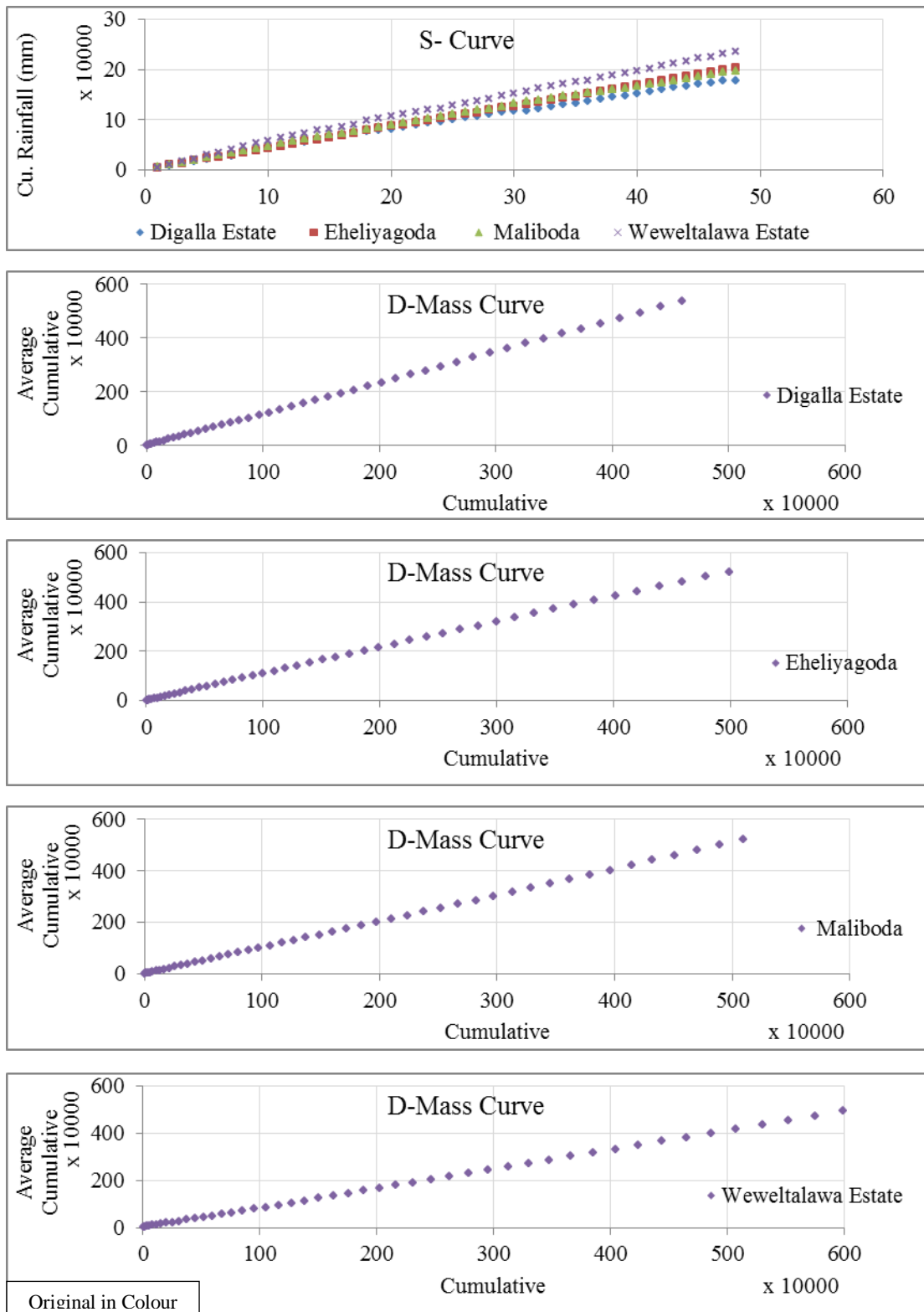


Figure A- 1: S-Curve & D-Mass Curve Analysis for Kelani Ganga (1966-2014)

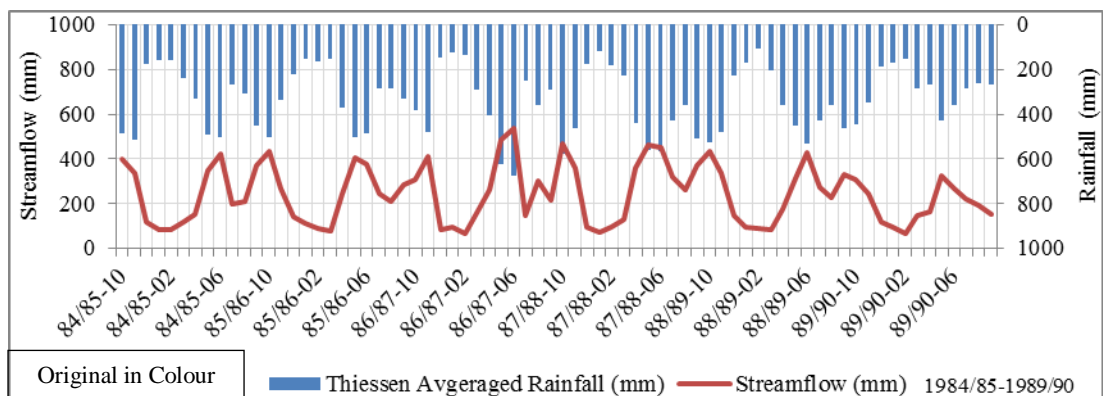
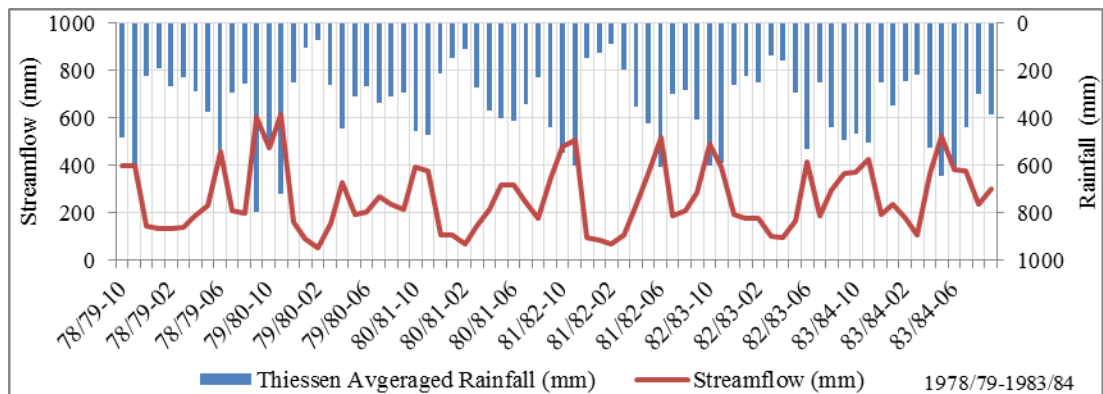
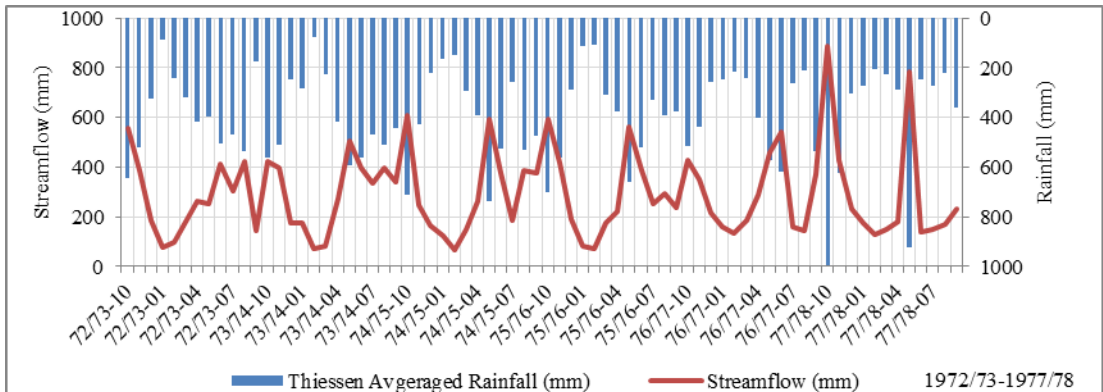
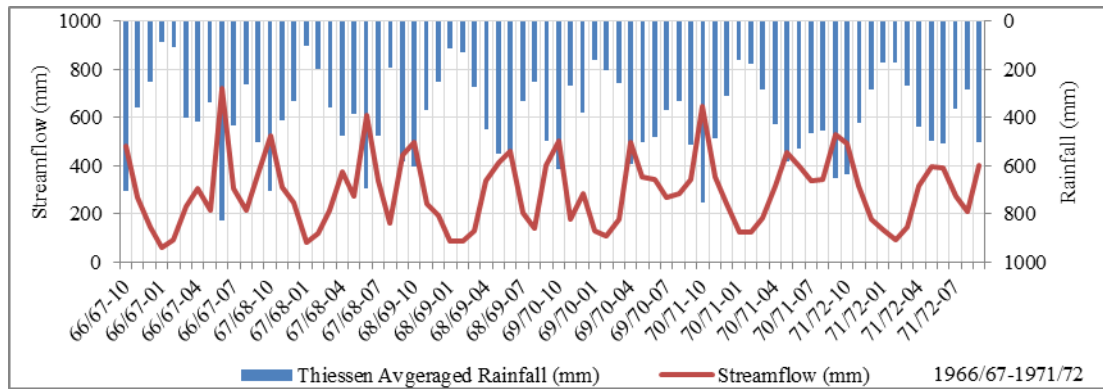


Figure A- 2: Streamflow Corresponding Monthly Rainfall for Kelani Ganga (1966-1990)

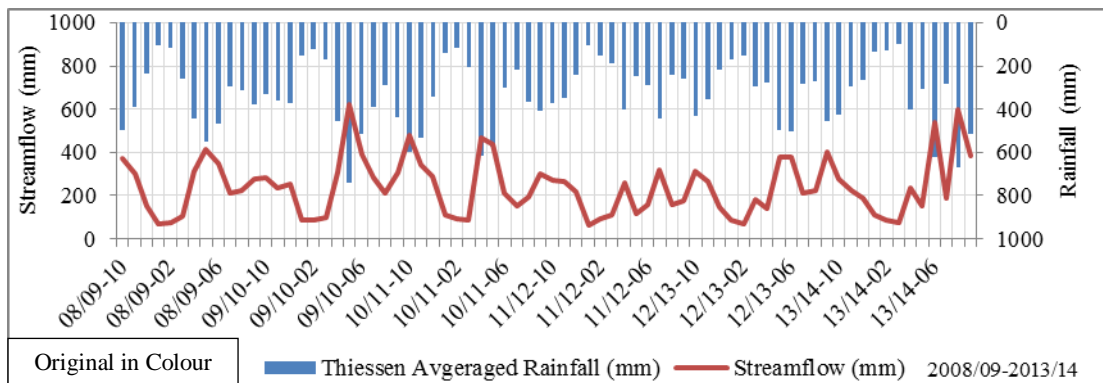
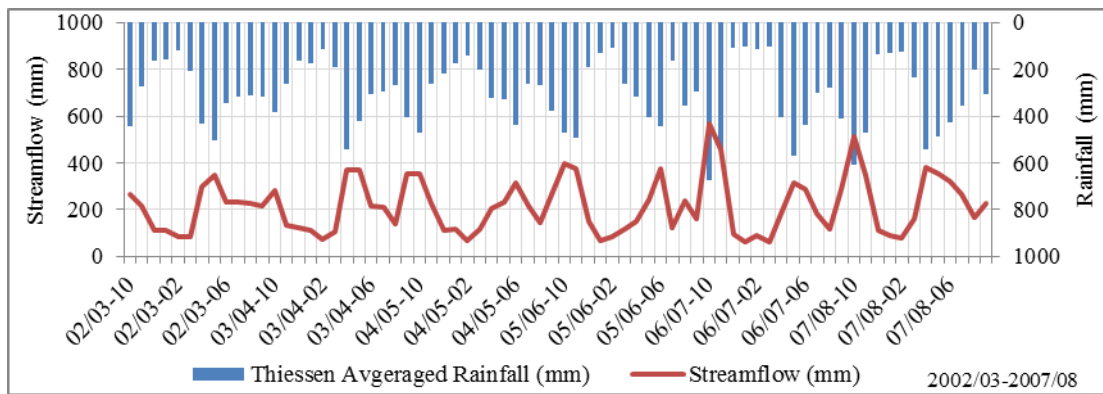
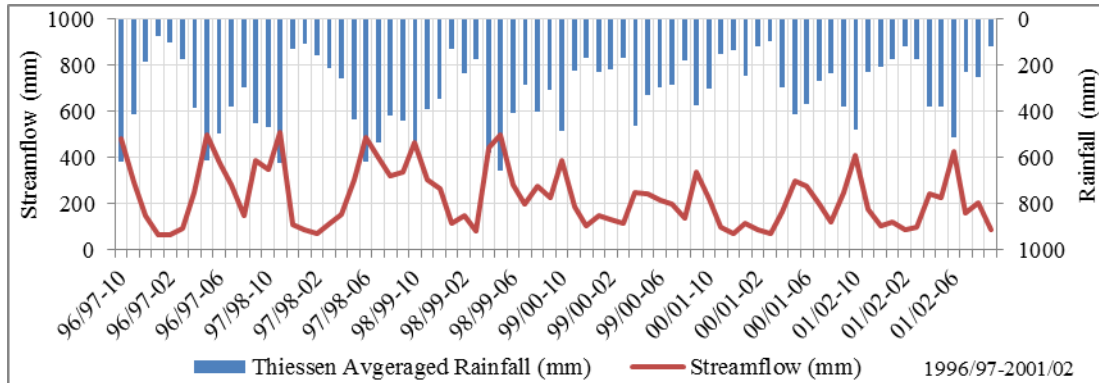
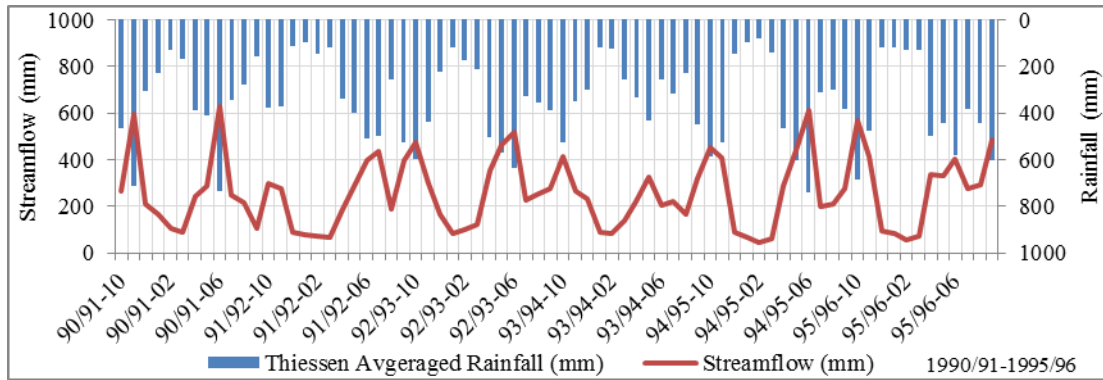


Figure A- 3: Streamflow Corresponding Monthly Rainfall for Kelani Ganga (1991-2014)

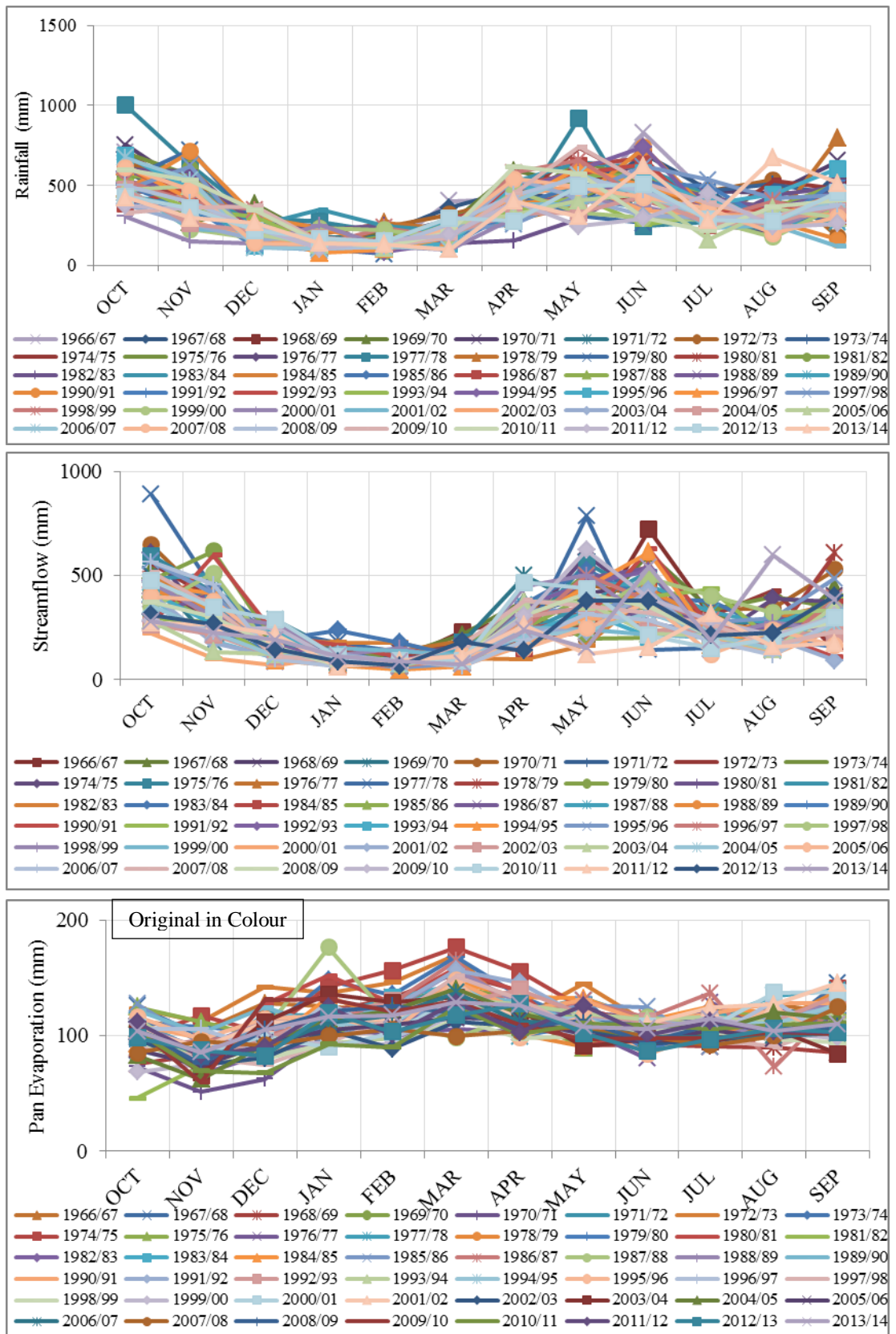


Figure A- 4: Monthly Rainfall, Streamflow and Evaporation for Kelani Ganga (1966-2014)

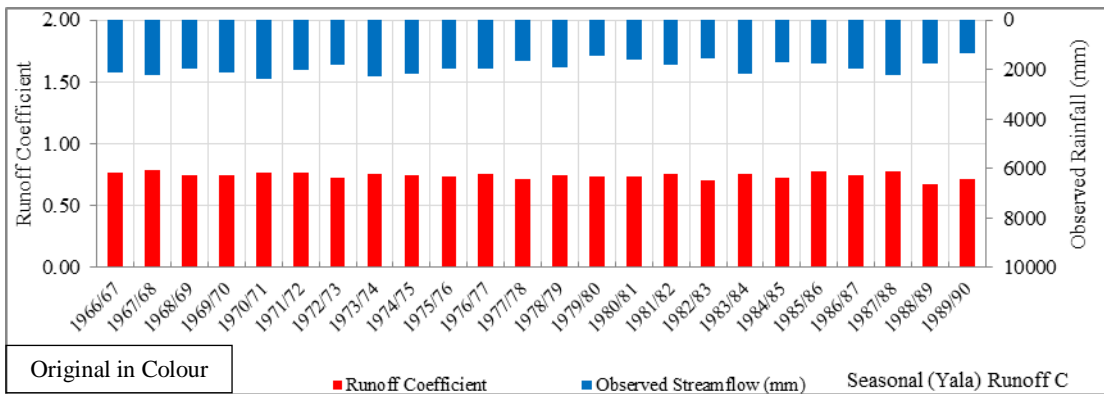
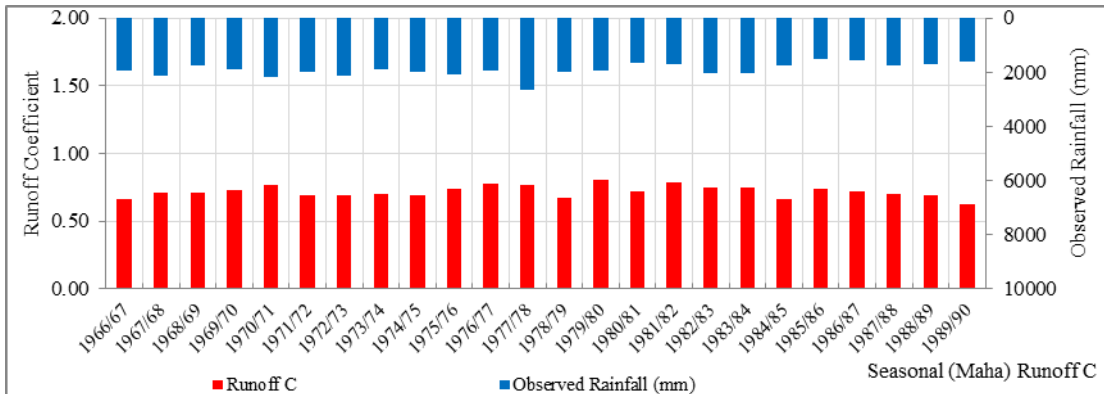
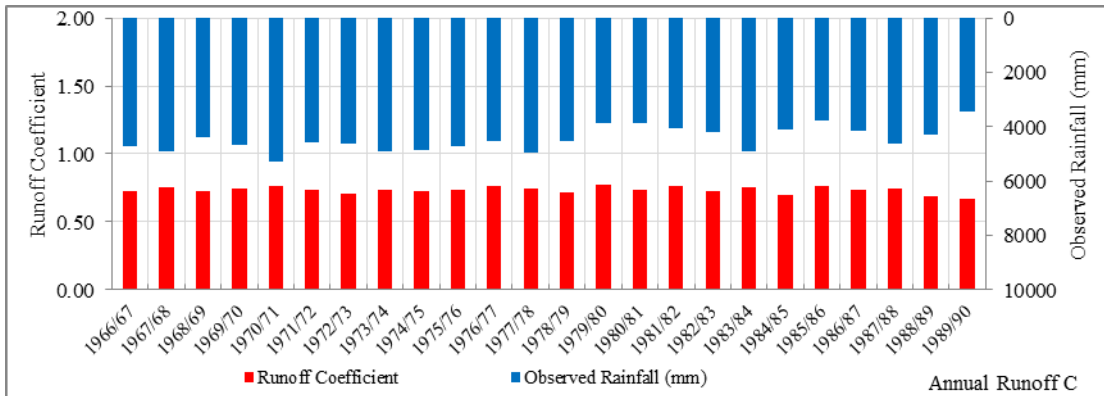
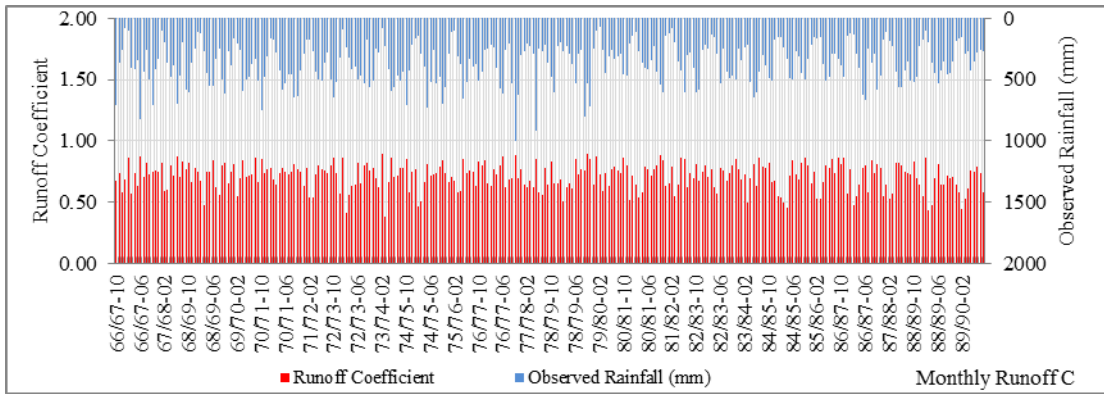


Figure A- 5: Monthly, Annual & Seasonal Runoff Coefficient for Kelani Ganga (1966-1990)

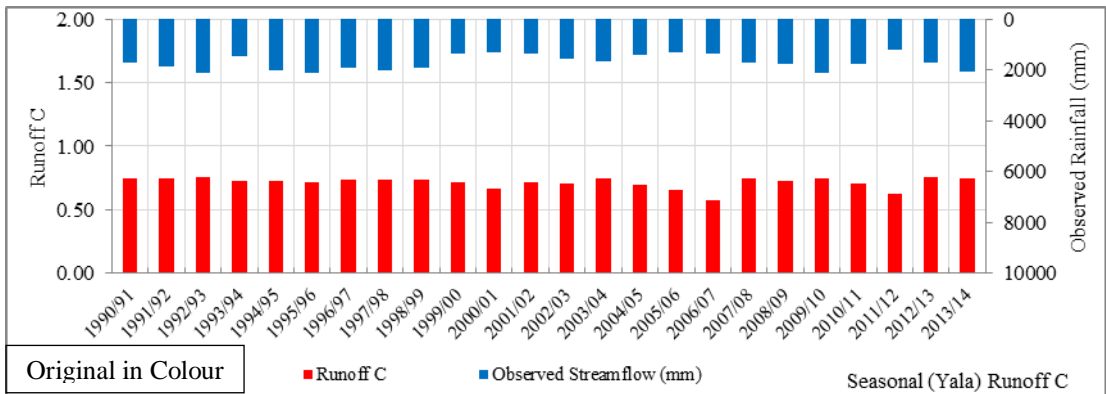
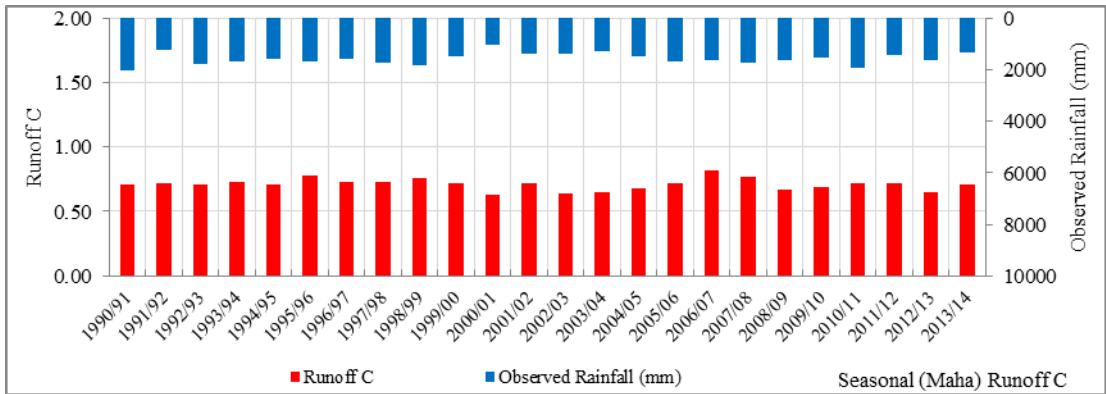
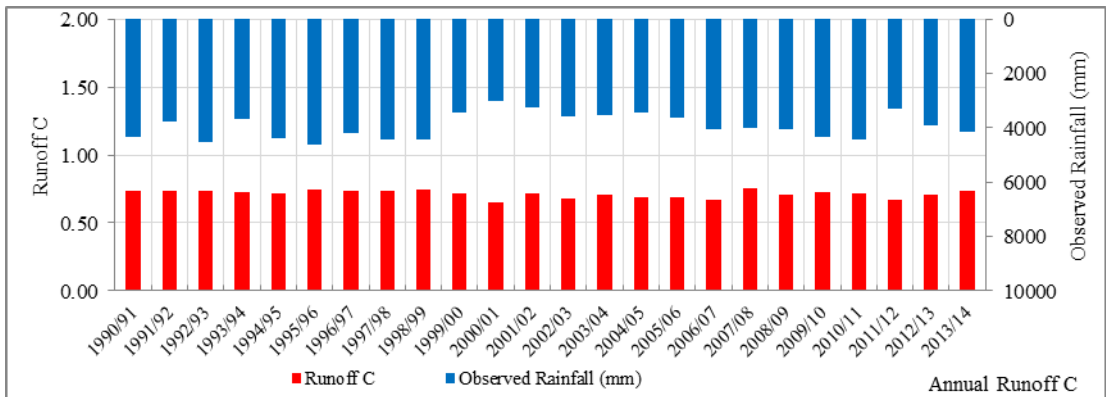
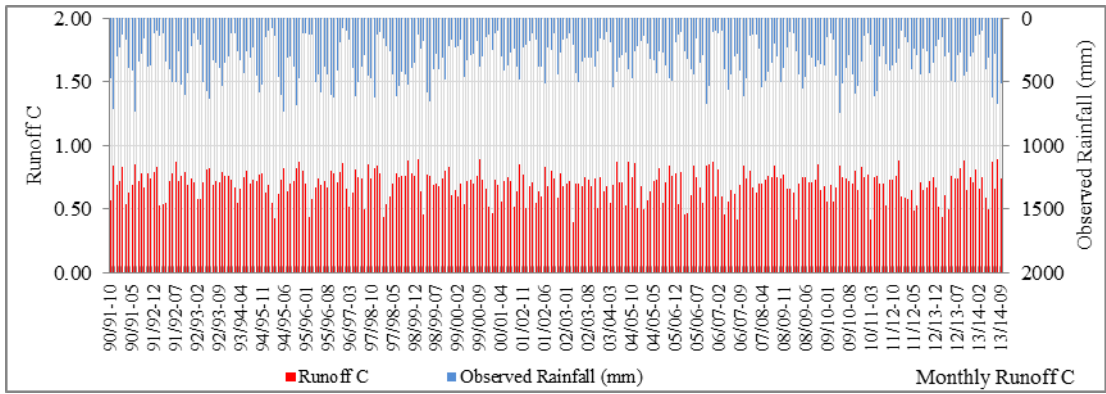


Figure A- 6: Monthly, Annual & Seasonal Runoff Coefficient for Kelani Ganga 1990-2014

Table A- 1: Parameter Optimization using MRAE for Kelani Ganga

c/SC	0.10	0.20	0.30	0.40	0.50	0.60	0.70	0.80	0.90	1.00
255	0.307	0.227	0.170	0.146	0.154	0.192	0.251	0.322	0.391	0.457
538	0.304	0.216	0.147	0.113	0.118	0.163	0.230	0.300	0.369	0.434
705	0.319	0.224	0.144	0.096	0.099	0.142	0.210	0.281	0.350	0.415
818	0.332	0.236	0.149	0.093	0.090	0.131	0.196	0.268	0.337	0.402
990	0.353	0.256	0.166	0.099	0.088	0.119	0.179	0.248	0.317	0.383
1148	0.373	0.276	0.186	0.115	0.093	0.116	0.166	0.232	0.300	0.366
1389	0.403	0.306	0.215	0.146	0.113	0.122	0.158	0.213	0.278	0.343
1820	0.454	0.356	0.267	0.200	0.159	0.149	0.165	0.202	0.253	0.311
2384	0.511	0.413	0.327	0.261	0.215	0.192	0.190	0.209	0.244	0.291
3123	0.573	0.476	0.392	0.326	0.275	0.243	0.229	0.233	0.252	0.284

Table A- 2: Parameter Optimization using Nash-Sutcliffe efficiency for Kelani Ganga

c/SC	0.10	0.20	0.30	0.40	0.50	0.60	0.70	0.80	0.90	1.00
255	0.676	0.816	0.901	0.937	0.927	0.878	0.792	0.676	0.532	0.366
538	0.678	0.823	0.913	0.953	0.949	0.904	0.824	0.712	0.573	0.411
705	0.683	0.829	0.921	0.963	0.961	0.918	0.840	0.730	0.593	0.432
818	0.683	0.830	0.924	0.967	0.966	0.924	0.847	0.738	0.602	0.442
990	0.677	0.826	0.921	0.967	0.967	0.928	0.852	0.745	0.611	0.453
1148	0.665	0.817	0.914	0.961	0.964	0.926	0.853	0.747	0.615	0.458
1389	0.640	0.795	0.895	0.946	0.952	0.918	0.847	0.745	0.615	0.461
1820	0.581	0.743	0.850	0.908	0.920	0.891	0.827	0.730	0.605	0.456
2384	0.495	0.667	0.783	0.850	0.870	0.849	0.792	0.702	0.583	0.440
3123	0.387	0.571	0.698	0.775	0.805	0.794	0.745	0.663	0.552	0.415

Table A- 3: Best Sets of Optimized Parameters for Kelani Ganga

Parameter	c	SC
1	0.46	990.00
2	0.46	895.50
3	0.46	899.475

APPENDIX-B

DATA CHECKING GIN GANGA

Figure B- 1: S-Curve & D-Mass Curve Analysis for Gin Ganga (1972-2012)

Figure B- 2: Streamflow Corresponding Monthly Rainfall for Gin Ganga (1972-1992)

Figure B- 3: Streamflow Corresponding Monthly Rainfall for Gin Ganga (1992-2012)

Figure B- 4: Monthly Rainfall, Streamflow and Evaporation for Gin Ganga (1972-2012)

Figure B- 5: Monthly, Annual & Seasonal Runoff Coefficient for Gin Ganga (1972-1992)

Figure B- 6: Monthly, Annual & Seasonal Runoff Coefficient for Gin Ganga 1992-2012

Figure B- 7: Variability of rainfall station wise and Total Rainfall by Thiessen Average and Arithmetic Mean Method for Kelani Ganga & Gin Ganga.

Table B- 1: Parameter Optimization using MRAE for Gin Ganga

Table B- 2: Parameter Optimization using Nash-Sutcliffe efficiency for Gin Ganga

Table B- 3: Best Sets of Optimized Parameters for Gin Ganga

APPENDIX-B: DATA CHECKING GIN GANGA

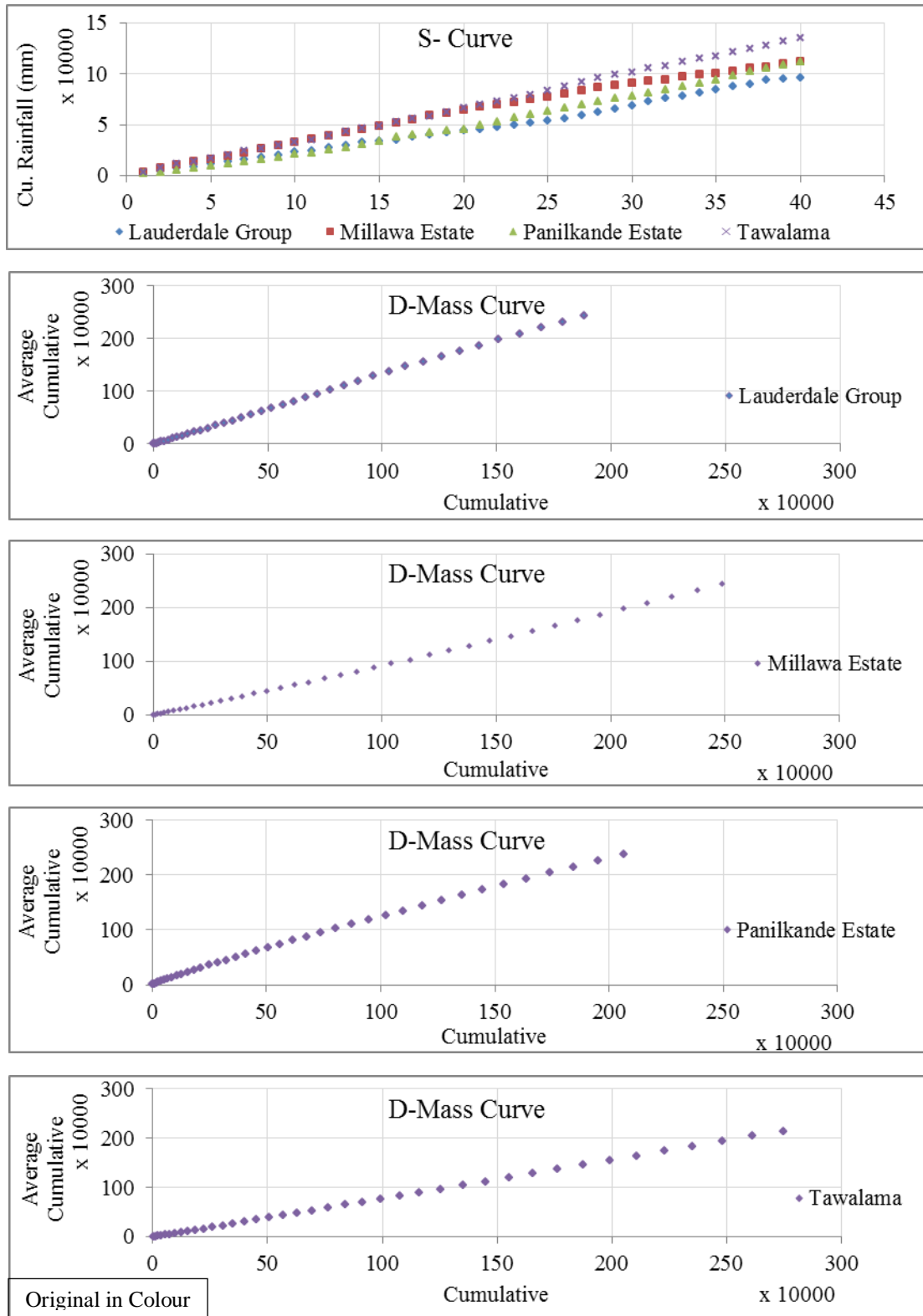


Figure B- 1: S-Curve & D-Mass Curve Analysis for Gin Ganga (1972-2012)

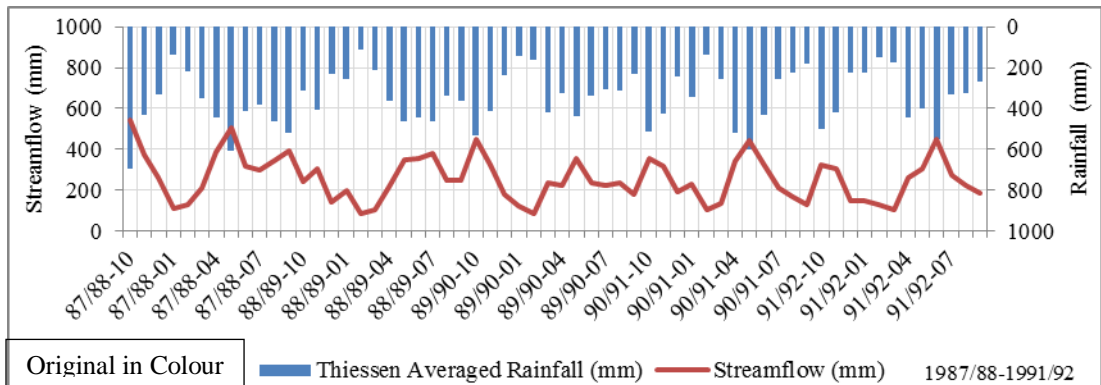
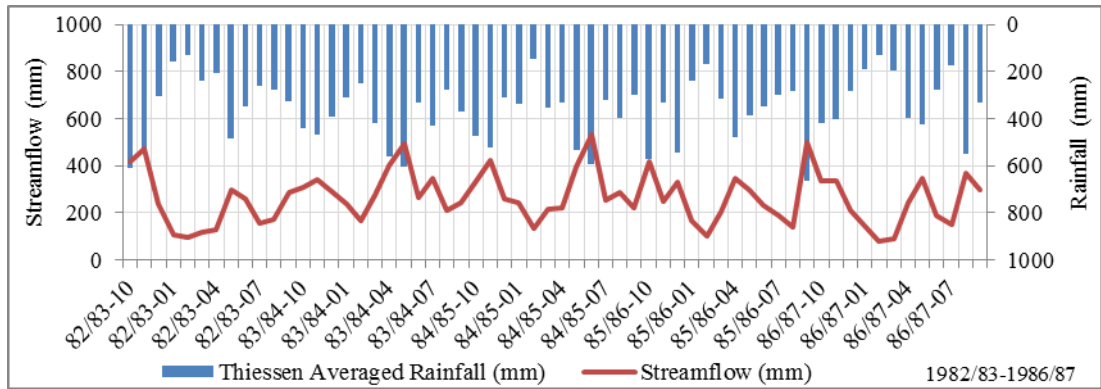
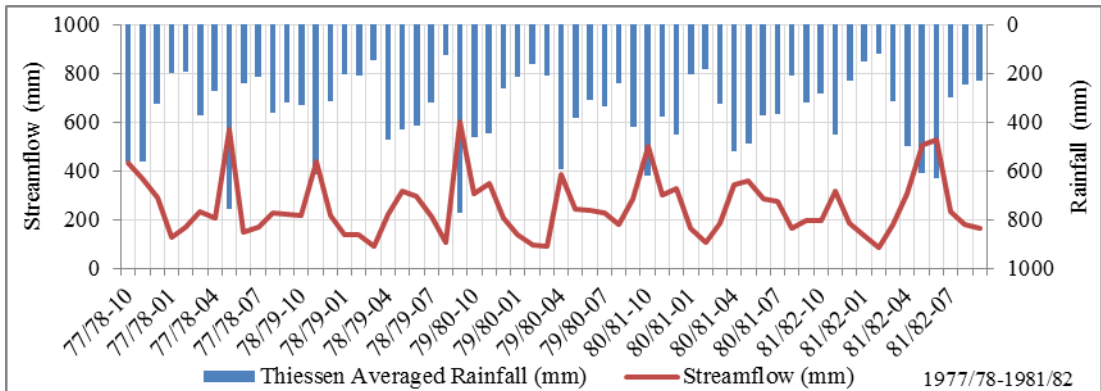
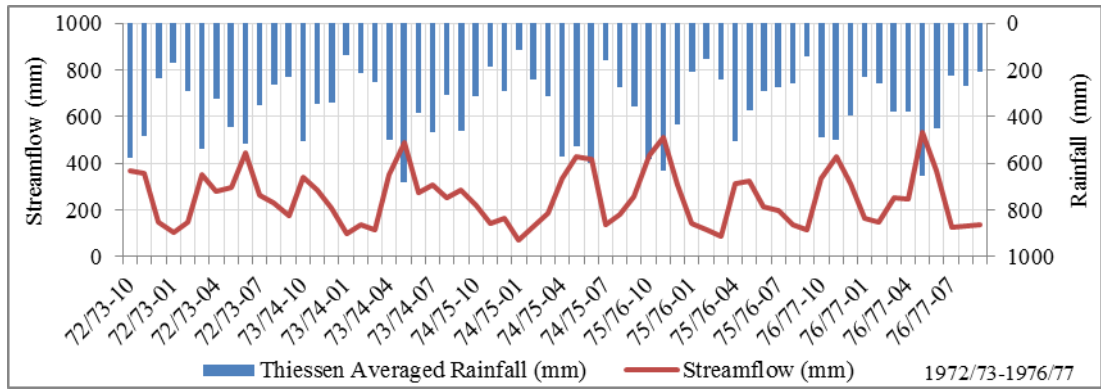


Figure B- 2: Streamflow Corresponding Monthly Rainfall for Gin Ganga (1972-1992)

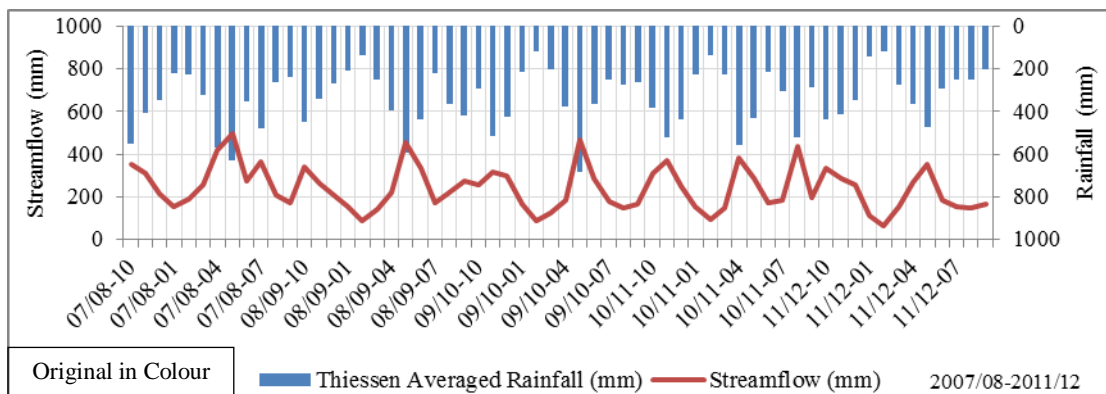
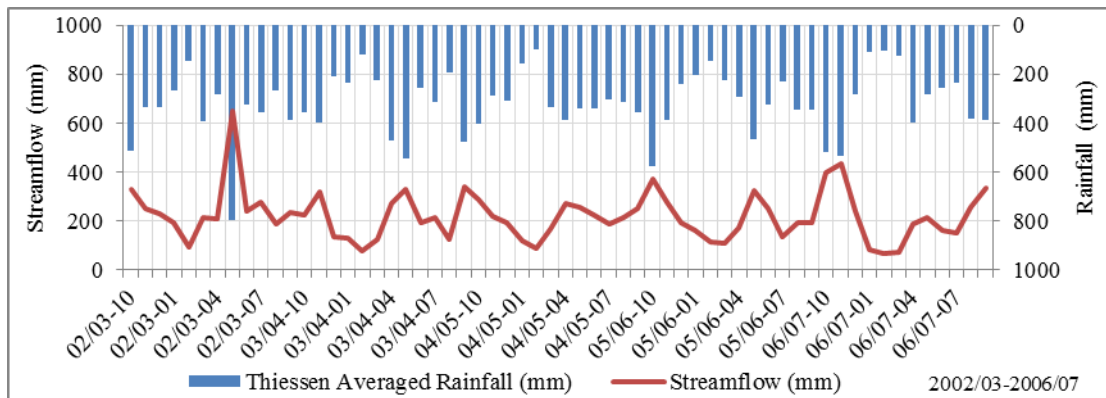
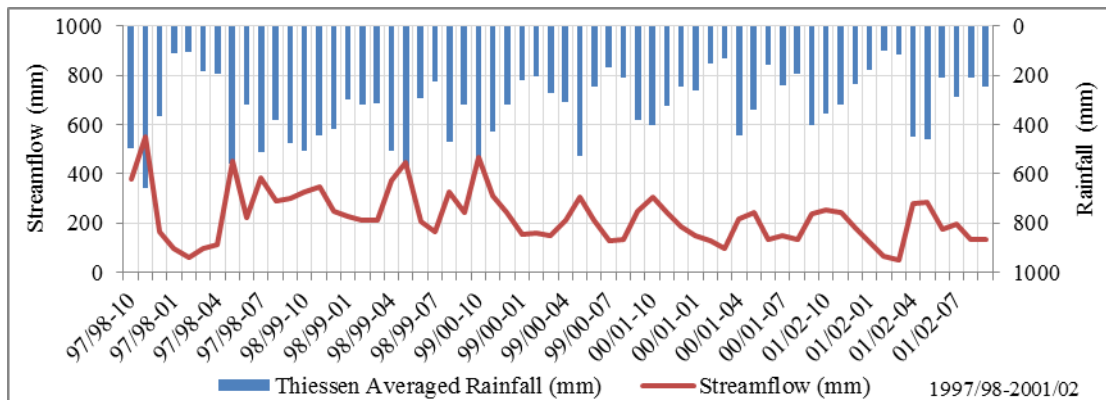
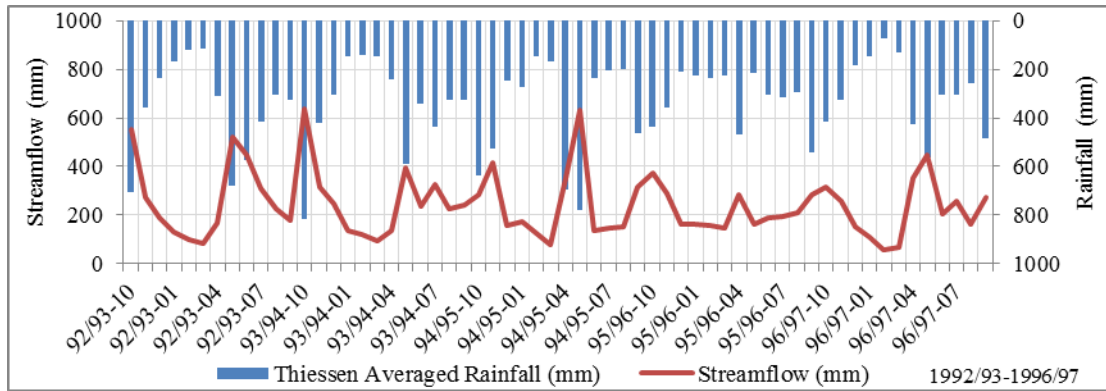


Figure B- 3: Streamflow Corresponding Monthly Rainfall for Gin Ganga (1992-2012)

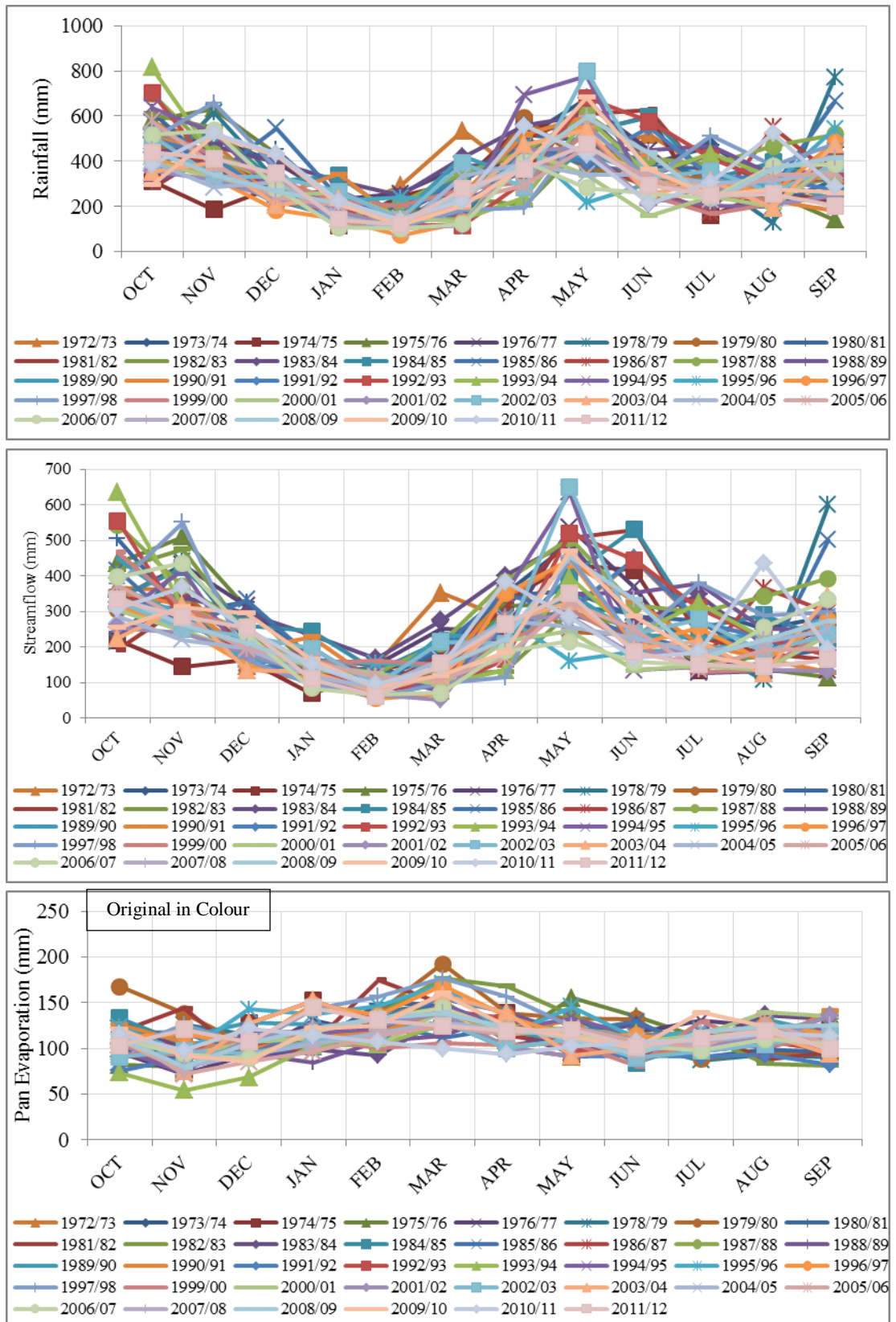


Figure B- 4: Monthly Rainfall, Streamflow and Evaporation for Gin Ganga (1972-2012)

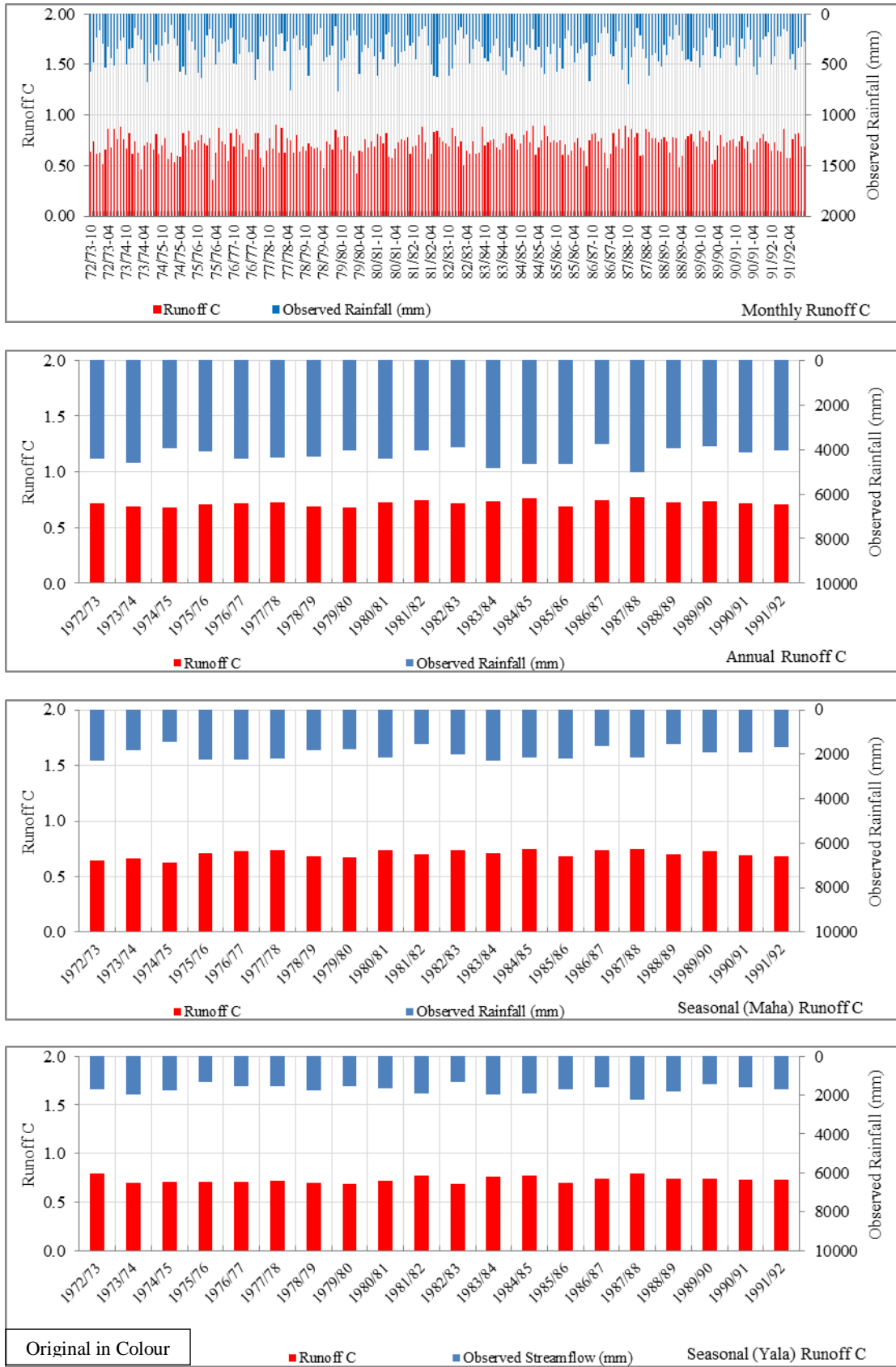


Figure B- 5: Monthly, Annual & Seasonal Runoff Coefficient for Gin Ganga (1972-1992)

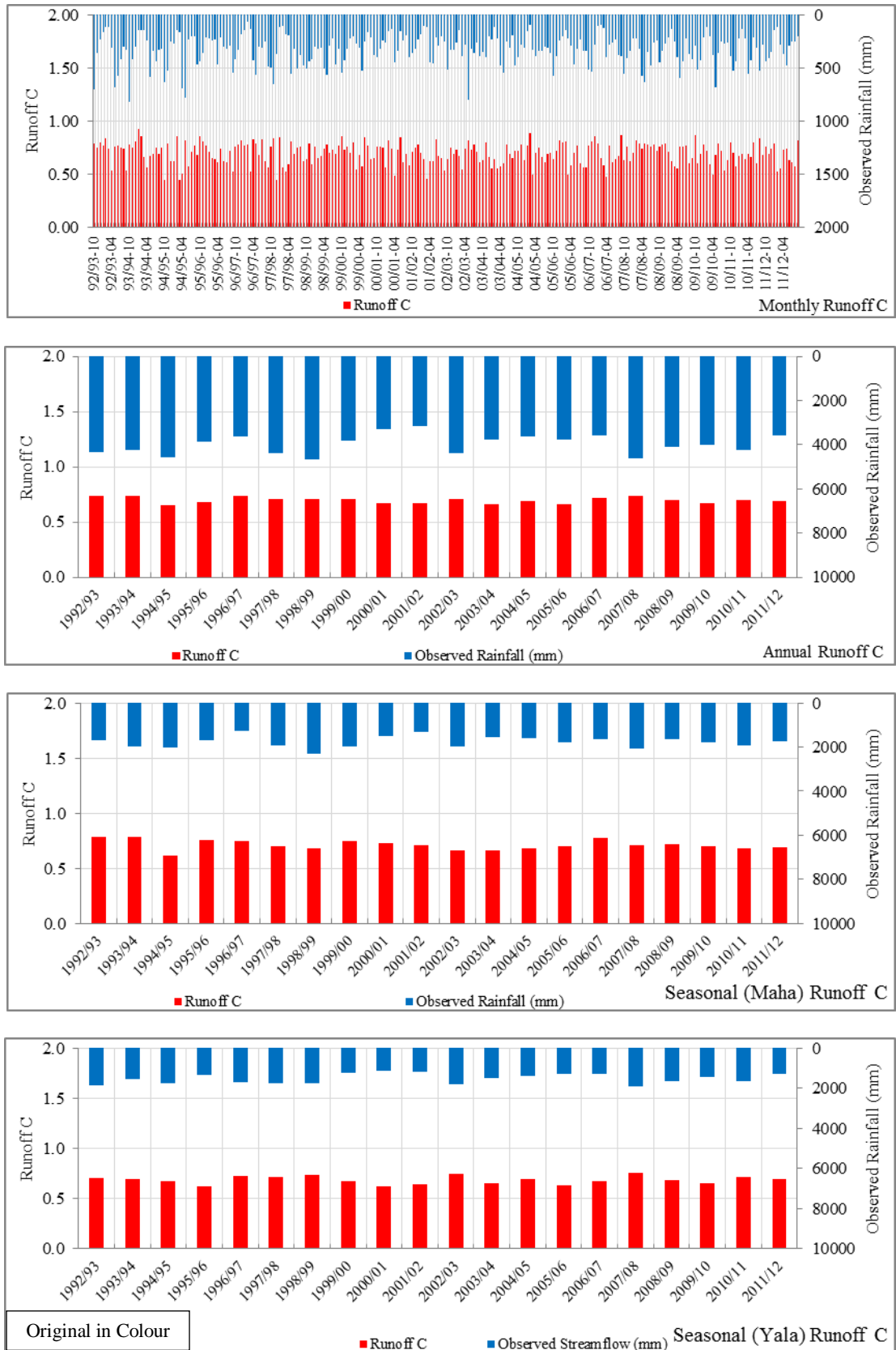


Figure B- 6: Monthly, Annual & Seasonal Runoff Coefficient for Gin Ganga 1992-2012

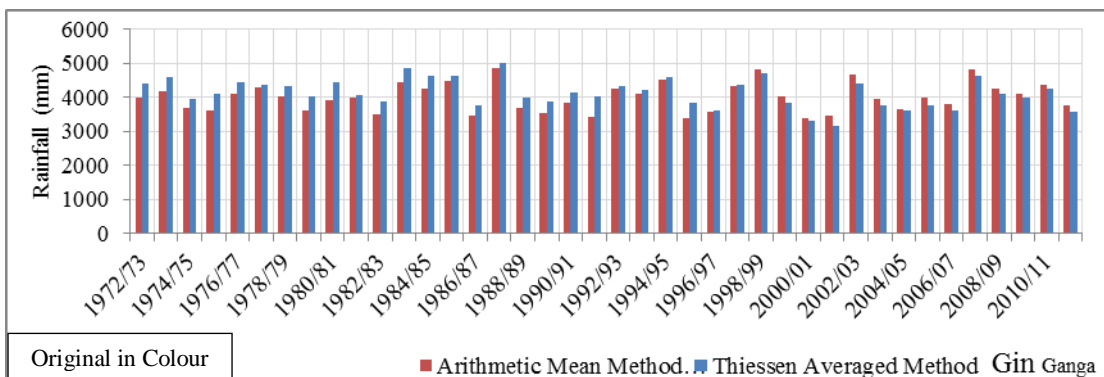
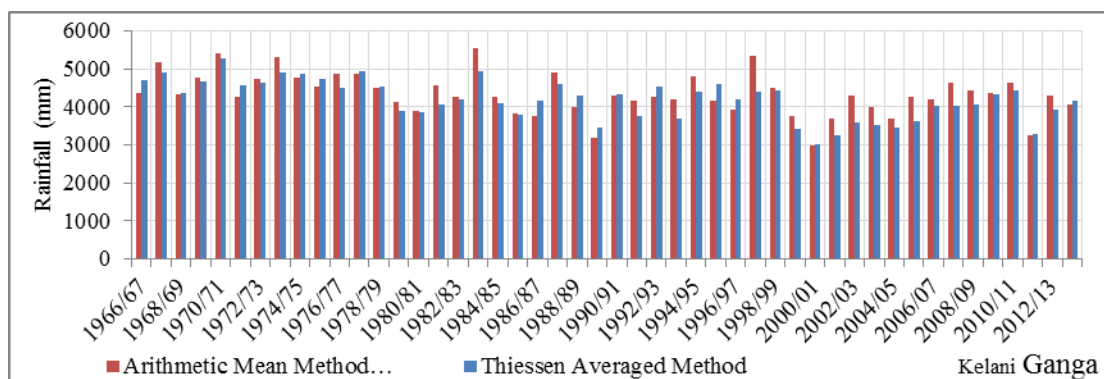
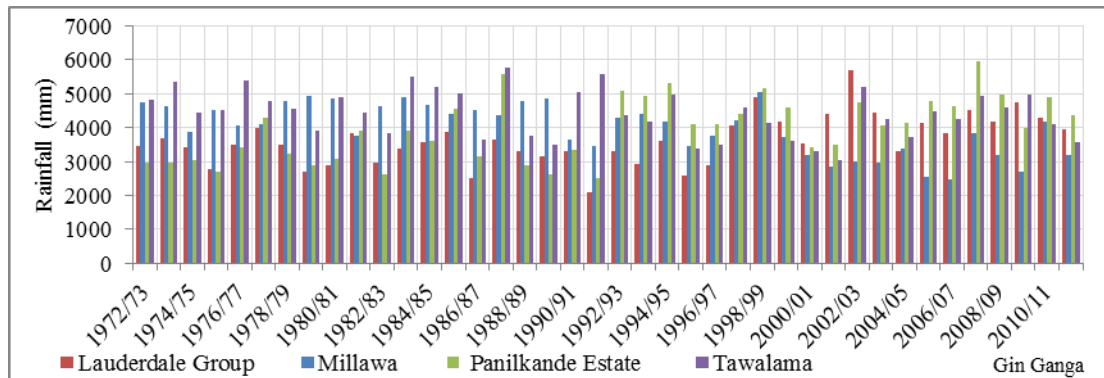
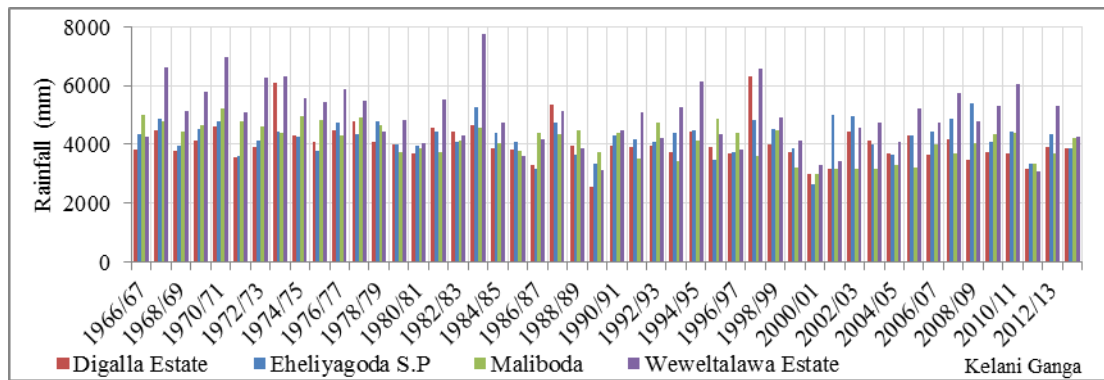


Figure B- 7: Variability of rainfall station wise and Total Rainfall by Thiessen Average and Arithmetic Mean Method for Kelani Ganga & Gin Ganga.

Table B- 1: Parameter Optimization using MRAE for Gin Ganga

c/SC	0.10	0.20	0.30	0.40	0.50	0.60	0.70	0.80	0.90	1.00
411	0.3316	0.2400	0.1878	0.1636	0.1693	0.1948	0.2427	0.3042	0.3698	0.4329
703	0.3236	0.2560	0.1664	0.1263	0.1189	0.1497	0.2065	0.2732	0.3399	0.4044
850	0.3360	0.2438	0.1846	0.1145	0.1005	0.1299	0.1903	0.2579	0.3256	0.3910
1114	0.3612	0.2655	0.1786	0.1273	0.0835	0.1079	0.1657	0.2338	0.3033	0.3695
1292	0.3776	0.2811	0.1922	0.1169	0.0971	0.1027	0.1541	0.2200	0.2897	0.3565
1434	0.3900	0.2933	0.2033	0.1258	0.0849	0.1120	0.1472	0.2108	0.2797	0.3469
1839	0.4223	0.3254	0.2347	0.1564	0.1103	0.1080	0.1424	0.1929	0.2564	0.3231
2409	0.4616	0.3642	0.2739	0.1984	0.1509	0.1318	0.1440	0.1829	0.2374	0.2982
3156	0.5022	0.4042	0.3173	0.2452	0.1951	0.1664	0.1618	0.1848	0.2261	0.2804
4450	0.5539	0.4576	0.3733	0.3044	0.2506	0.2138	0.1970	0.2017	0.2273	0.2673

Table B- 2: Parameter Optimization using Nash-Sutcliffe efficiency for Gin Ganga

c/SC	0.10	0.20	0.30	0.40	0.50	0.60	0.70	0.80	0.90	1.00
411	0.11	0.526	0.697	0.791	0.813	0.7725	0.676	0.529	0.341	0.116
703	0.33	0.48	0.771	0.867	0.892	0.8533	0.758	0.613	0.424	0.199
850	0.37	0.627	0.71	0.898	0.922	0.8831	0.787	0.642	0.453	0.227
1114	0.39	0.654	0.829	0.87	0.950	0.9114	0.816	0.670	0.482	0.256
1292	0.39	0.656	0.832	0.929	0.92	0.9174	0.823	0.678	0.490	0.265
1434	0.39	0.650	0.828	0.927	0.954	0.9041	0.823	0.680	0.493	0.269
1839	0.35	0.617	0.800	0.903	0.935	0.9019	0.82	0.672	0.488	0.267
2409	0.27	0.550	0.741	0.852	0.891	0.8645	0.781	0.67	0.467	0.251
3156	0.17	0.459	0.660	0.780	0.828	0.8096	0.733	0.606	0.46	0.222
4450	0.01	0.320	0.535	0.669	0.729	0.7225	0.657	0.539	0.374	0.21

Table B- 3: Best Sets of Optimized Parameters for Gin Ganga

Parameters	C	SC
1	0.51	1292.0
2	0.51	1277.1
3	0.51	1322

APPENDIX-C

ANALYSIS KELANI GANGA

Figure C- 1: Warming up period for soil water content at Kelani Ganga (1966-1990)

Figure C- 2: Soil Moisture Content corresponding to observed Rainfall & Streamflow for Kelani Ganga (1966-1990)

Figure C- 3: Parameter Optimization Using MRAE at Kelani Ganga

Figure C- 4: Parameter Optimization Using Nash-Sutcliffe efficiency at Kelani Ganga

Figure C- 5: MRAE Monthly, Seasonal and Annual Water Balance for Kelani Ganga (1966-1990)

Table C- 1: Warming up periodfor soil water content at Kelani Ganga (1966-1990)

Table C- 2: MRAE Monthly Water Balance for Kelani Ganga (1966-1990)

Table C- 3: MRAE Seasonal Water Balance (Maha) for Kelani Ganga (1966-1990)

Table C- 4: MRAE Seasonal Water Balance (Yala) for Kelani Ganga (1966-1990)

Table C- 5: MRAE Annual Water Balance for Kelani Ganga (1966-1990)

APPENDIX-C: ANALYSIS KELANI GANGA

Table C- 1: Warming up period for soil water content at Kelani Ganga (1966-1990)

Warming up Period	St-1 (mm)
0	0
1	138.88
2	138.88
3	139.06
4	138.88
5	138.88

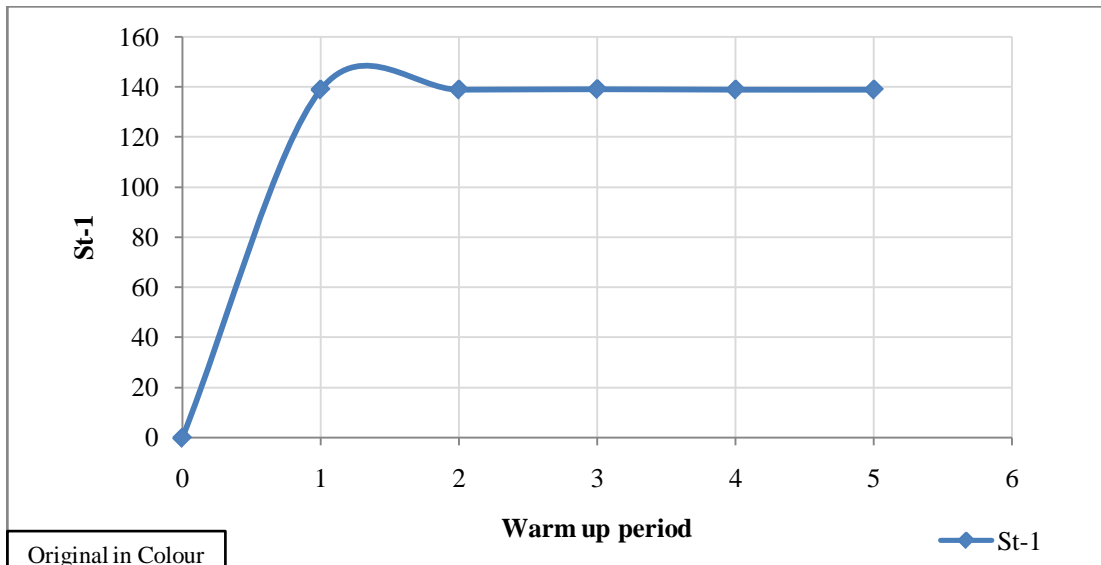


Figure C- 1: Warming up period for soil water content at Kelani Ganga (1966-1990)

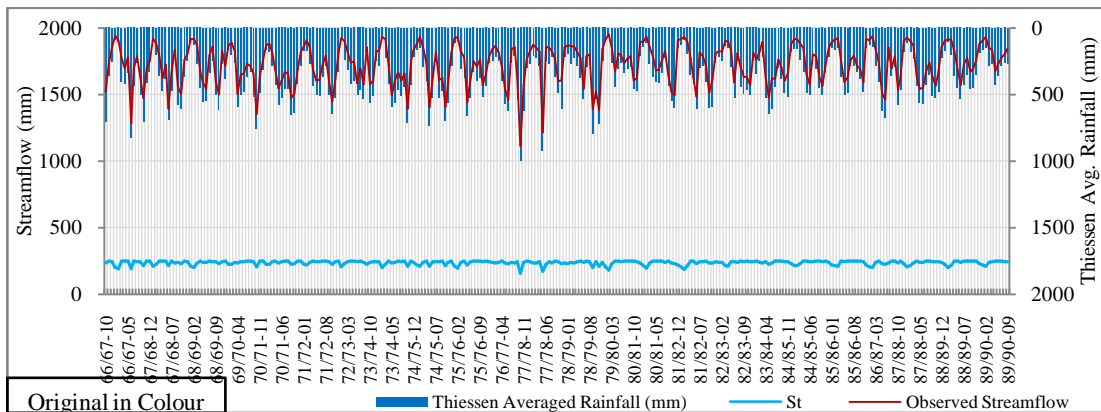


Figure C- 2: Soil Moisture Content corresponding to observed Rainfall & Streamflow for Kelani Ganga (1966-1990)

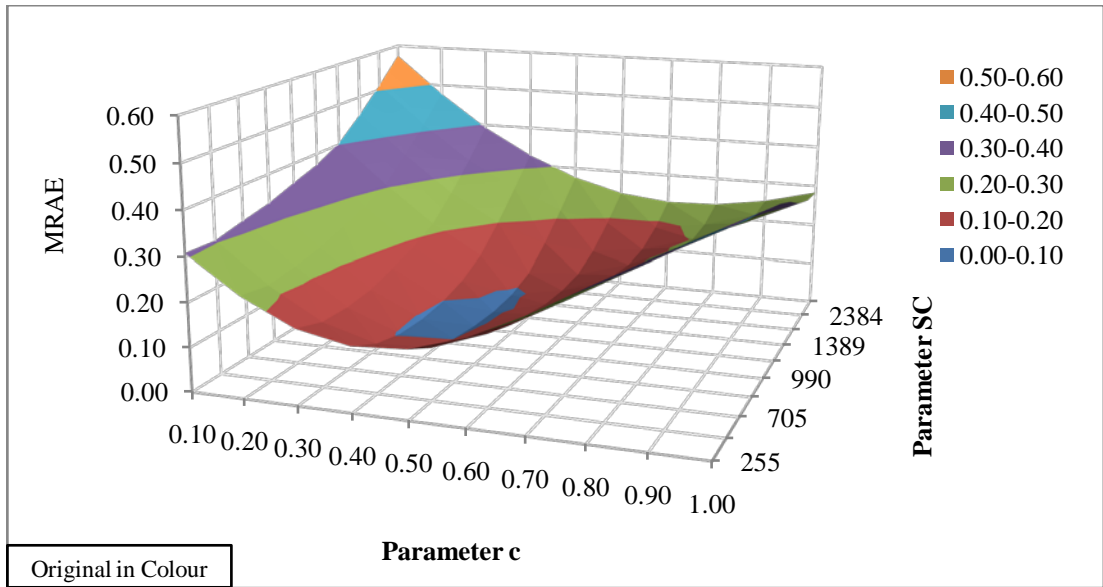


Figure C- 3: Parameter Optimization Using MRAE at Kelani Ganga

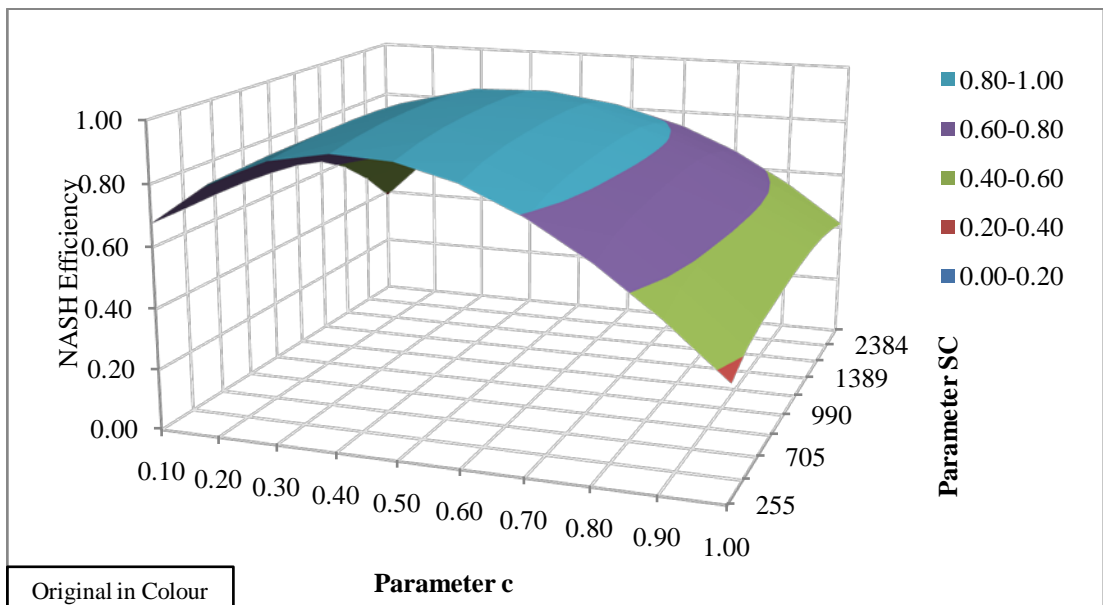


Figure C- 4: Parameter Optimization Using Nash-Sutcliffe efficiency at Kelani Ganga

Table C- 2: MRAE Monthly Water Balance for Kelani Ganga (1966-1990)

Parameter c	MRAE SC=255	MRAE SC=538	MRAE SC=705	MRAE SC=818	MRAE SC=990	MRAE SC=1148	MRAE SC=1389	MRAE SC=1820	MRAE SC=2384	MRAE SC=3123
0.10	0.307	0.304	0.319	0.332	0.353	0.373	0.403	0.454	0.511	0.573
0.20	0.227	0.216	0.224	0.236	0.256	0.276	0.306	0.356	0.413	0.476
0.30	0.170	0.147	0.144	0.149	0.166	0.186	0.215	0.267	0.327	0.392
0.40	0.146	0.113	0.096	0.093	0.099	0.115	0.146	0.200	0.261	0.326
0.50	0.154	0.118	0.099	0.090	0.088	0.093	0.113	0.159	0.215	0.275
0.60	0.192	0.163	0.142	0.131	0.119	0.116	0.122	0.149	0.192	0.243
0.70	0.251	0.230	0.210	0.196	0.179	0.166	0.158	0.165	0.190	0.229
0.80	0.322	0.300	0.281	0.268	0.248	0.232	0.213	0.202	0.209	0.233
0.90	0.391	0.369	0.350	0.337	0.317	0.300	0.278	0.253	0.244	0.252
1.00	0.457	0.434	0.415	0.402	0.383	0.366	0.343	0.311	0.291	0.284

Table C- 3: MRAE Seasonal Water Balance (Maha) for Kelani Ganga (1966-1990)

Parameter c	MRAE SC=255	MRAE SC=538	MRAE SC=705	MRAE SC=818	MRAE SC=990	MRAE SC=1148	MRAE SC=1389	MRAE SC=1820	MRAE SC=2384	MRAE SC=3123
0.10	0.264	0.266	0.281	0.293	0.312	0.329	0.354	0.395	0.441	0.490
0.20	0.172	0.177	0.193	0.204	0.223	0.240	0.265	0.306	0.350	0.398
0.30	0.087	0.095	0.109	0.120	0.138	0.155	0.180	0.220	0.263	0.314
0.40	0.046	0.041	0.042	0.048	0.061	0.075	0.098	0.140	0.186	0.235
0.50	0.088	0.072	0.059	0.050	0.038	0.035	0.040	0.068	0.111	0.159
0.60	0.159	0.145	0.128	0.115	0.096	0.080	0.060	0.041	0.049	0.087
0.70	0.233	0.217	0.199	0.186	0.168	0.151	0.128	0.092	0.061	0.047
0.80	0.303	0.285	0.267	0.254	0.236	0.219	0.197	0.162	0.124	0.086
0.90	0.370	0.349	0.331	0.318	0.300	0.284	0.262	0.228	0.192	0.155
1.00	0.433	0.410	0.392	0.379	0.361	0.346	0.324	0.292	0.257	0.221

Table C- 4: MRAE Seasonal Water Balance (Yala) for Kelani Ganga (1966-1990)

Parameter c	MRAE SC=255	MRAE SC=538	MRAE SC=705	MRAE SC=818	MRAE SC=990	MRAE SC=1148	MRAE SC=1389	MRAE SC=1820	MRAE SC=2384	MRAE SC=3123
0.10	0.252	0.260	0.264	0.266	0.270	0.273	0.277	0.284	0.292	0.298
0.20	0.171	0.179	0.183	0.185	0.189	0.192	0.196	0.203	0.210	0.217
0.30	0.093	0.101	0.105	0.107	0.110	0.113	0.118	0.125	0.132	0.138
0.40	0.027	0.031	0.034	0.036	0.038	0.041	0.045	0.051	0.057	0.063
0.50	0.059	0.052	0.048	0.046	0.043	0.040	0.037	0.033	0.031	0.031
0.60	0.124	0.118	0.114	0.112	0.109	0.106	0.102	0.095	0.089	0.083
0.70	0.192	0.185	0.182	0.180	0.177	0.174	0.170	0.163	0.157	0.151
0.80	0.256	0.250	0.247	0.245	0.242	0.239	0.235	0.229	0.222	0.217
0.90	0.318	0.313	0.310	0.307	0.304	0.301	0.297	0.291	0.285	0.280
1.00	0.378	0.372	0.369	0.367	0.364	0.361	0.357	0.351	0.345	0.340

Table C- 5: MRAE Annual Water Balance for Kelani Ganga (1966-1990)

Parameter c	MRAE SC=255	MRAE SC=538	MRAE SC=705	MRAE SC=818	MRAE SC=990	MRAE SC=1148	MRAE SC=1389	MRAE SC=1820	MRAE SC=2384	MRAE SC=3123
0.10	0.255	0.260	0.269	0.275	0.285	0.294	0.308	0.329	0.352	0.377
0.20	0.170	0.176	0.185	0.192	0.202	0.211	0.224	0.245	0.268	0.291
0.30	0.088	0.095	0.104	0.111	0.121	0.130	0.143	0.163	0.186	0.209
0.40	0.0248	0.028	0.034	0.039	0.046	0.052	0.065	0.085	0.107	0.130
0.50	0.067	0.058	0.050	0.045	0.036	0.031	0.0254	0.027	0.039	0.059
0.60	0.140	0.130	0.120	0.114	0.104	0.095	0.083	0.064	0.046	0.034
0.70	0.209	0.199	0.189	0.183	0.173	0.164	0.152	0.133	0.113	0.093
0.80	0.276	0.265	0.255	0.249	0.239	0.230	0.219	0.200	0.181	0.161
0.90	0.340	0.328	0.318	0.312	0.302	0.294	0.282	0.264	0.246	0.227
1.00	0.400	0.388	0.378	0.372	0.362	0.354	0.343	0.326	0.308	0.290

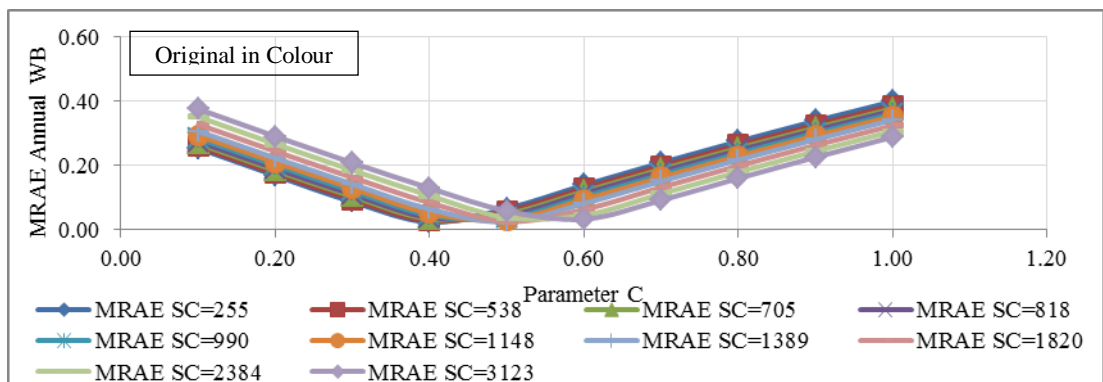
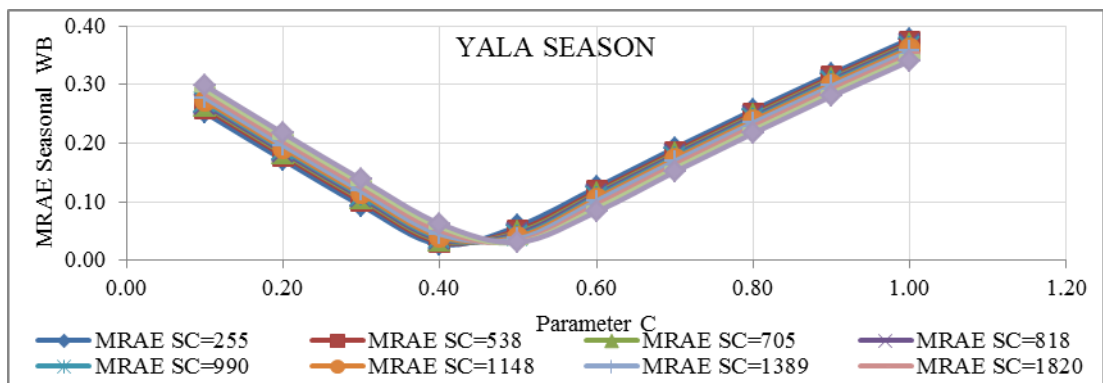
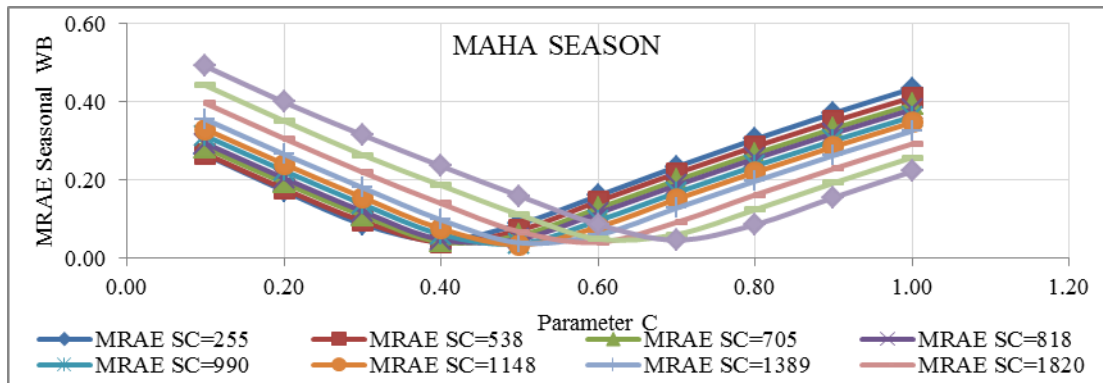
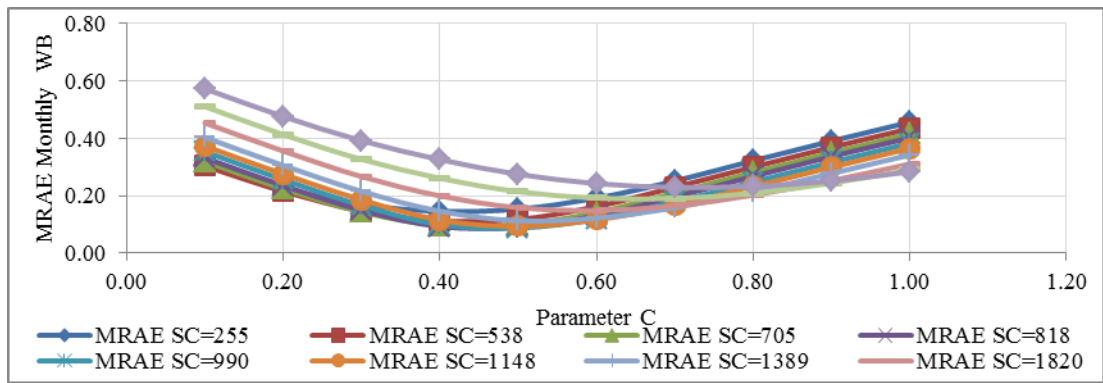


Figure C- 5: MRAE Monthly, Seasonal and Annual Water Balance for Kelani Ganga (1966-1990)

APPENDIX-D
ANALYSIS GIN GANGA

Figure D- 1: Warming up period for soil water content at Gin Ganga (1972-1992)

Figure D- 2: Soil Moisture Content corresponding to observed Rainfall & Streamflow for Gin Ganga (1972-1992)

Figure D- 3: Parameter Optimization Using MRAE at Gin Ganga

Figure D- 4: Parameter Optimization Using Nash-Sutcliffe efficiency at Gin Ganga

Figure D- 5: MRAE Monthly, Seasonal & Annual Water Balance for Gin Ganga (1972-1992)

Table D- 1: Warming up period for soil water content at Gin Ganga (1972-1992)

Table D- 2: MRAE Monthly Water Balance for Gin Ganga (1972-1992)

Table D- 3: MRAE Seasonal Water Balance (Maha) for Gin Ganga (1972-1992)

Table D- 4: MRAE Seasonal Water Balance (Yala) for Gin Ganga (1972-1992)

Table D- 5: MRAE Annual Water Balance for Gin Ganga (1972-1992)

APPENDIX-D: ANALYSIS GIN GANGA

Table D- 1: Warming up period for soil water content at Gin Ganga (1972-1992)

Warm up Period	St-1
0	0
1	280.00
2	280.00
3	280.00
4	280.00
5	280.00

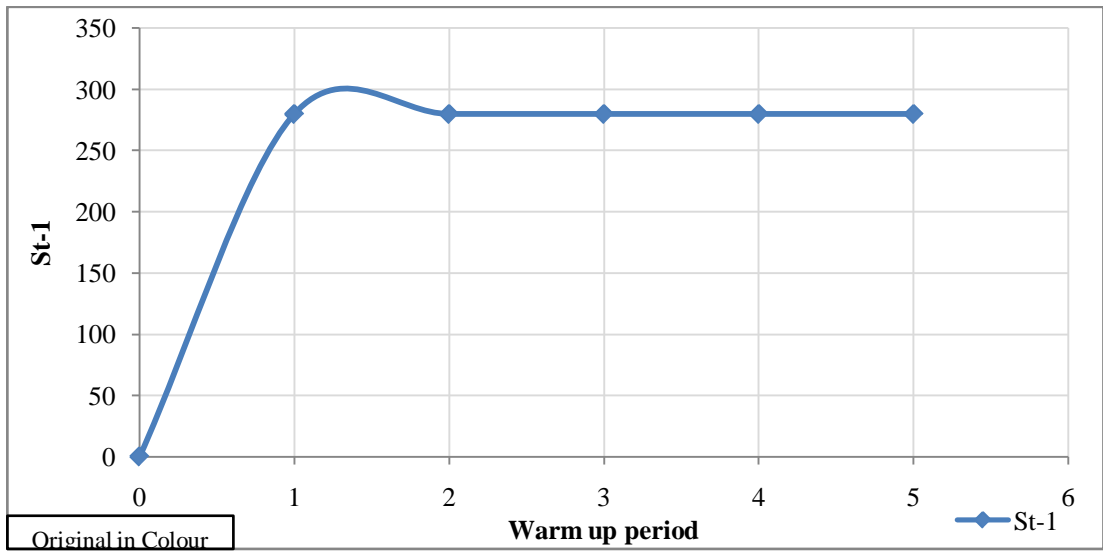


Figure D- 1: Warming up period for soil water content at Gin Ganga (1972-1992)

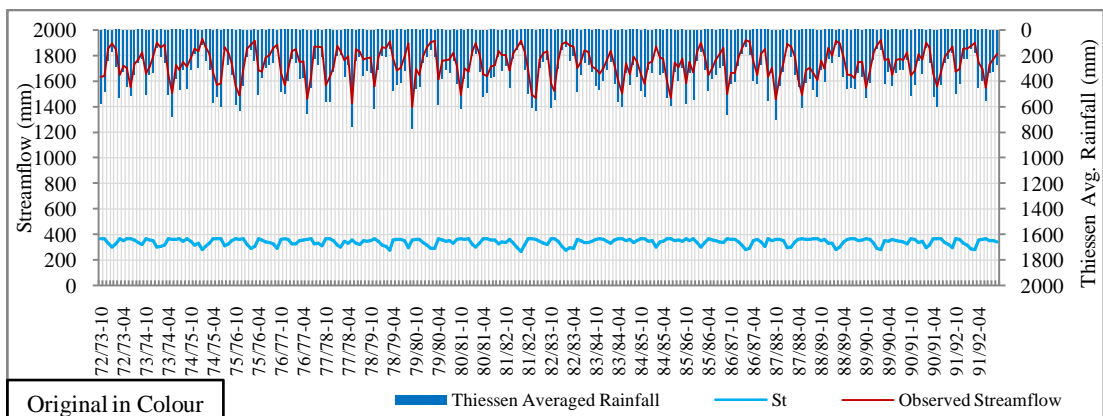


Figure D- 2: Soil Moisture Content corresponding to observed Rainfall & Streamflow for Gin Ganga (1972-1992)

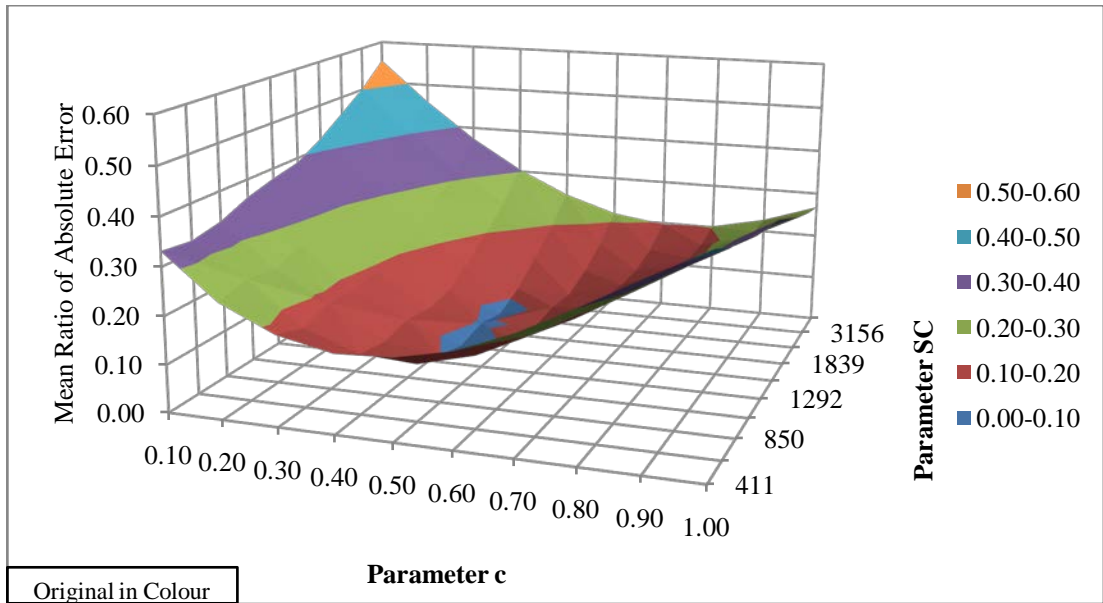


Figure D- 3: Parameter Optimization Using MRAE at Gin Ganga

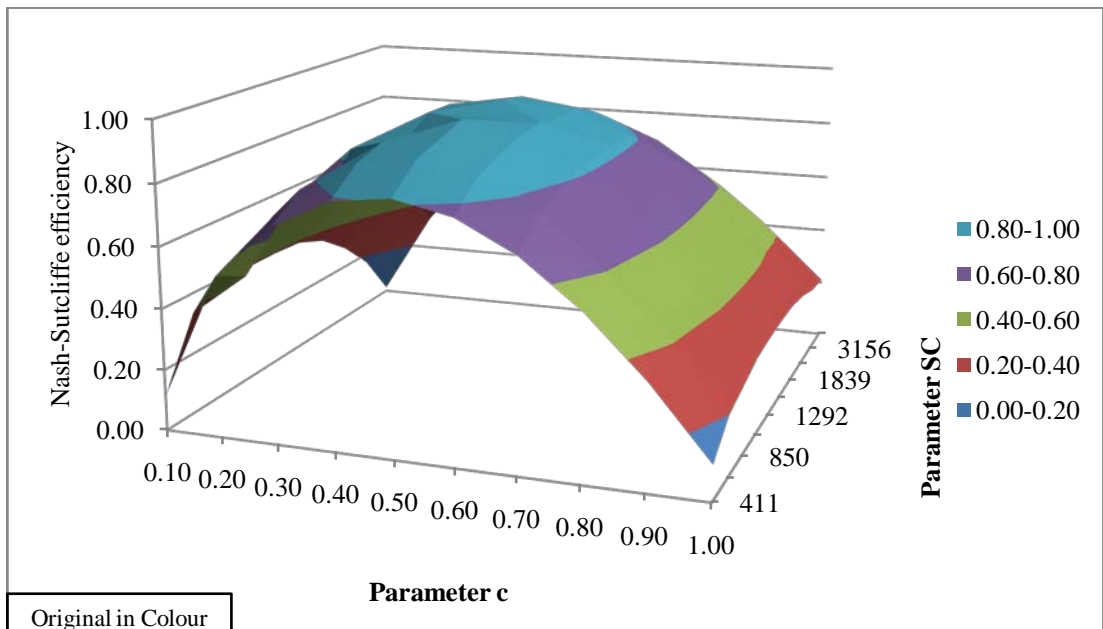


Figure D- 4: Parameter Optimization Using Nash-Sutcliffe efficiency at Gin Ganga

Table D- 2: MRAE Monthly Water Balance for Gin Ganga (1972-1992)

Parameter c	MRAE SC=411	MRAE SC=703	MRAE SC=850	MRAE _{SC=1114}	MRAE SC=1292	MRAE SC=1434	MRAE SC=1839	MRAE SC=2409	MRAE SC=3156	MRAE SC=4450
0.10	0.332	0.324	0.336	0.361	0.378	0.390	0.422	0.462	0.502	0.554
0.20	0.240	0.256	0.244	0.265	0.281	0.293	0.325	0.364	0.404	0.458
0.30	0.188	0.166	0.185	0.179	0.192	0.203	0.235	0.274	0.317	0.373
0.40	0.164	0.126	0.114	0.127	0.117	0.126	0.156	0.198	0.245	0.304
0.50	0.169	0.119	0.101	0.084	0.097	0.085	0.110	0.151	0.195	0.251
0.60	0.195	0.150	0.130	0.108	0.103	0.112	0.108	0.132	0.166	0.214
0.70	0.243	0.207	0.190	0.166	0.154	0.147	0.142	0.144	0.162	0.197
0.80	0.304	0.273	0.258	0.234	0.220	0.211	0.193	0.183	0.185	0.202
0.90	0.370	0.340	0.326	0.303	0.290	0.280	0.256	0.237	0.226	0.227
1.00	0.433	0.404	0.391	0.370	0.356	0.347	0.323	0.298	0.280	0.267

Table D- 3: MRAE Seasonal Water Balance (Maha) for Gin Ganga (1972-1992)

Parameter c	MRAE SC=411	MRAE SC=703	MRAE SC=850	MRAE _{SC=1114}	MRAE SC=1292	MRAE SC=1434	MRAE SC=1839	MRAE SC=2409	MRAE SC=3156	MRAE SC=4450
0.10	0.303	0.317	0.326	0.344	0.356	0.365	0.388	0.415	0.444	0.479
0.20	0.209	0.224	0.233	0.252	0.263	0.272	0.295	0.322	0.350	0.384
0.30	0.119	0.134	0.144	0.162	0.174	0.183	0.206	0.232	0.259	0.297
0.40	0.053	0.055	0.061	0.077	0.089	0.097	0.120	0.145	0.173	0.215
0.50	0.073	0.054	0.048	0.041	0.041	0.042	0.050	0.070	0.098	0.137
0.60	0.140	0.118	0.106	0.085	0.072	0.063	0.050	0.053	0.063	0.080
0.70	0.207	0.187	0.176	0.158	0.147	0.138	0.118	0.094	0.079	0.080
0.80	0.278	0.258	0.247	0.229	0.218	0.210	0.190	0.167	0.144	0.119
0.90	0.346	0.325	0.315	0.297	0.286	0.278	0.259	0.237	0.215	0.189
1.00	0.410	0.389	0.379	0.361	0.351	0.343	0.324	0.303	0.282	0.258

Table D- 4: MRAE Seasonal Water Balance (Yala) for Gin Ganga (1972-1992)

Parameter c	MRAE SC=411	MRAE SC=703	MRAE SC=850	MRAE _{SC=1114}	MRAE SC=1292	MRAE SC=1434	MRAE SC=1839	MRAE SC=2409	MRAE SC=3156	MRAE SC=4450
0.10	0.270	0.284	0.291	0.301	0.307	0.311	0.321	0.331	0.339	0.348
0.20	0.187	0.201	0.208	0.217	0.223	0.227	0.236	0.245	0.253	0.261
0.30	0.109	0.121	0.127	0.136	0.142	0.145	0.154	0.163	0.170	0.178
0.40	0.051	0.053	0.055	0.060	0.064	0.067	0.075	0.083	0.090	0.097
0.50	0.060	0.049	0.044	0.038	0.035	0.033	0.031	0.030	0.033	0.040
0.60	0.117	0.104	0.098	0.090	0.086	0.082	0.075	0.068	0.064	0.060
0.70	0.186	0.173	0.168	0.160	0.156	0.153	0.146	0.139	0.133	0.128
0.80	0.252	0.240	0.235	0.227	0.223	0.220	0.214	0.207	0.202	0.197
0.90	0.315	0.303	0.299	0.292	0.288	0.285	0.279	0.273	0.268	0.264
1.00	0.375	0.364	0.360	0.353	0.350	0.347	0.342	0.336	0.331	0.327

Table D- 5: MRAE Annual Water Balance for Gin Ganga (1972-1992)

Parameter c	MRAE SC=411	MRAE SC=703	MRAE SC=850	MRAE _{SC=1114}	MRAE SC=1292	MRAE SC=1434	MRAE SC=1839	MRAE SC=2409	MRAE SC=3156	MRAE SC=4450
0.10	0.284	0.297	0.305	0.318	0.326	0.332	0.347	0.364	0.380	0.400
0.20	0.197	0.210	0.218	0.231	0.239	0.245	0.259	0.276	0.292	0.310
0.30	0.112	0.126	0.134	0.147	0.155	0.160	0.175	0.191	0.206	0.224
0.40	0.043	0.049	0.054	0.066	0.073	0.079	0.093	0.108	0.123	0.140
0.50	0.054	0.043	0.038	0.030	0.027	0.027	0.030	0.036	0.049	0.067
0.60	0.121	0.106	0.099	0.087	0.080	0.074	0.061	0.048	0.040	0.036
0.70	0.193	0.178	0.170	0.159	0.151	0.146	0.134	0.120	0.107	0.092
0.80	0.261	0.246	0.239	0.227	0.220	0.215	0.203	0.190	0.177	0.163
0.90	0.326	0.311	0.304	0.293	0.286	0.281	0.270	0.257	0.245	0.232
1.00	0.388	0.373	0.366	0.355	0.349	0.344	0.333	0.321	0.310	0.297

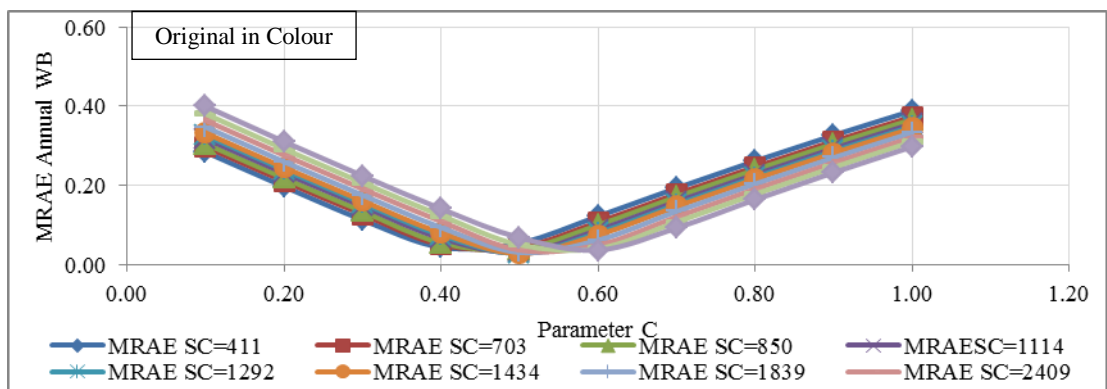
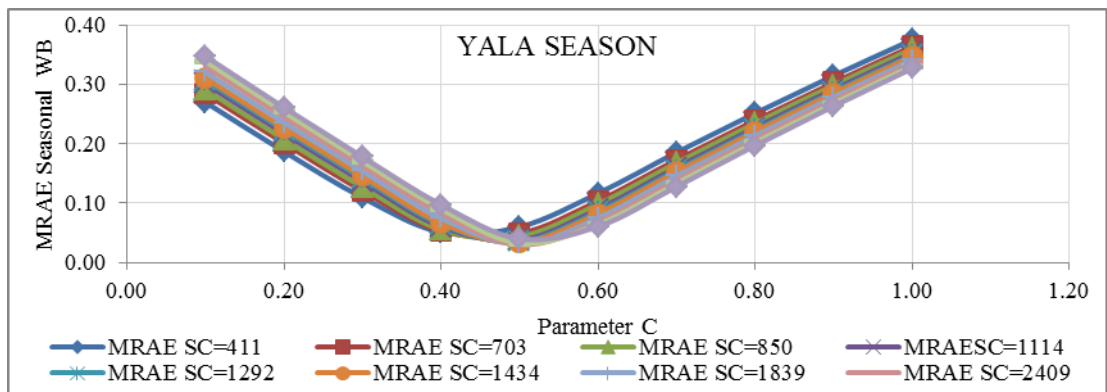
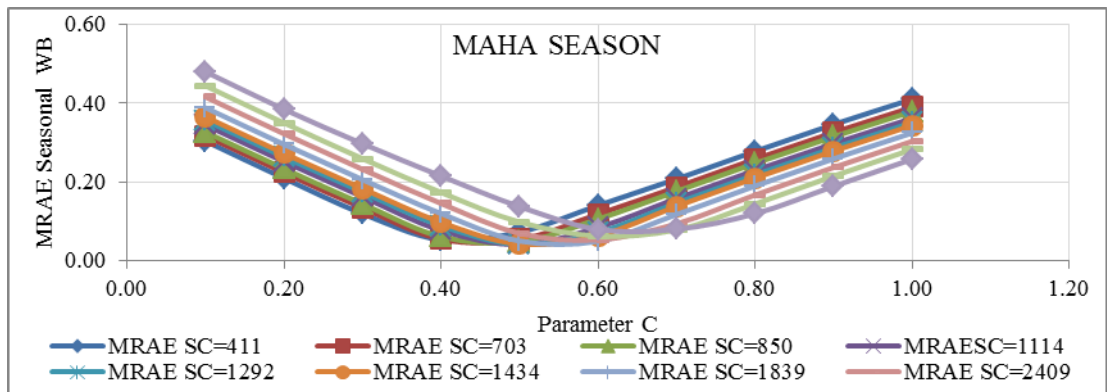
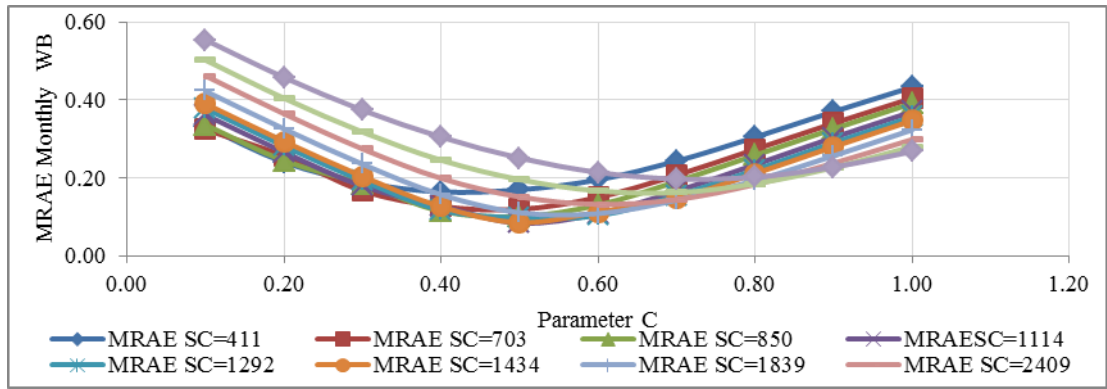


Figure D- 5: MRAE Monthly, Seasonal & Annual Water Balance for Gin Ganga (1972-1992)

APPENDIX-E
RESULTS KELANI GANGA
(CALIBRATION)

Figure E- 1: Outflow Hydrograph for Kelani Ganga 1966-1978 (Normal & Logarithmic Plot)

Figure E- 2: Outflow Hydrograph for Kelani Ganga 1978-1990 (Normal & Logarithmic Plot)

Figure E- 3: Outflow Hydrograph for Kelani Ganga 1966-1978 (Normal & Logarithmic Plot)

Figure E- 4: Outflow Hydrograph for Kelani Ganga 1978-1990 (Normal & Logarithmic Plot)

Figure E- 5: Outflow Hydrograph for Gin Ganga 1972-1982 (Normal & Logarithmic Plot)

Figure E- 6: Outflow Hydrograph for Gin Ganga 1972-1992 (Normal & Logarithmic Plot)

APPENDIX-E: CALIBRATION RESULTS KELANI GANGA

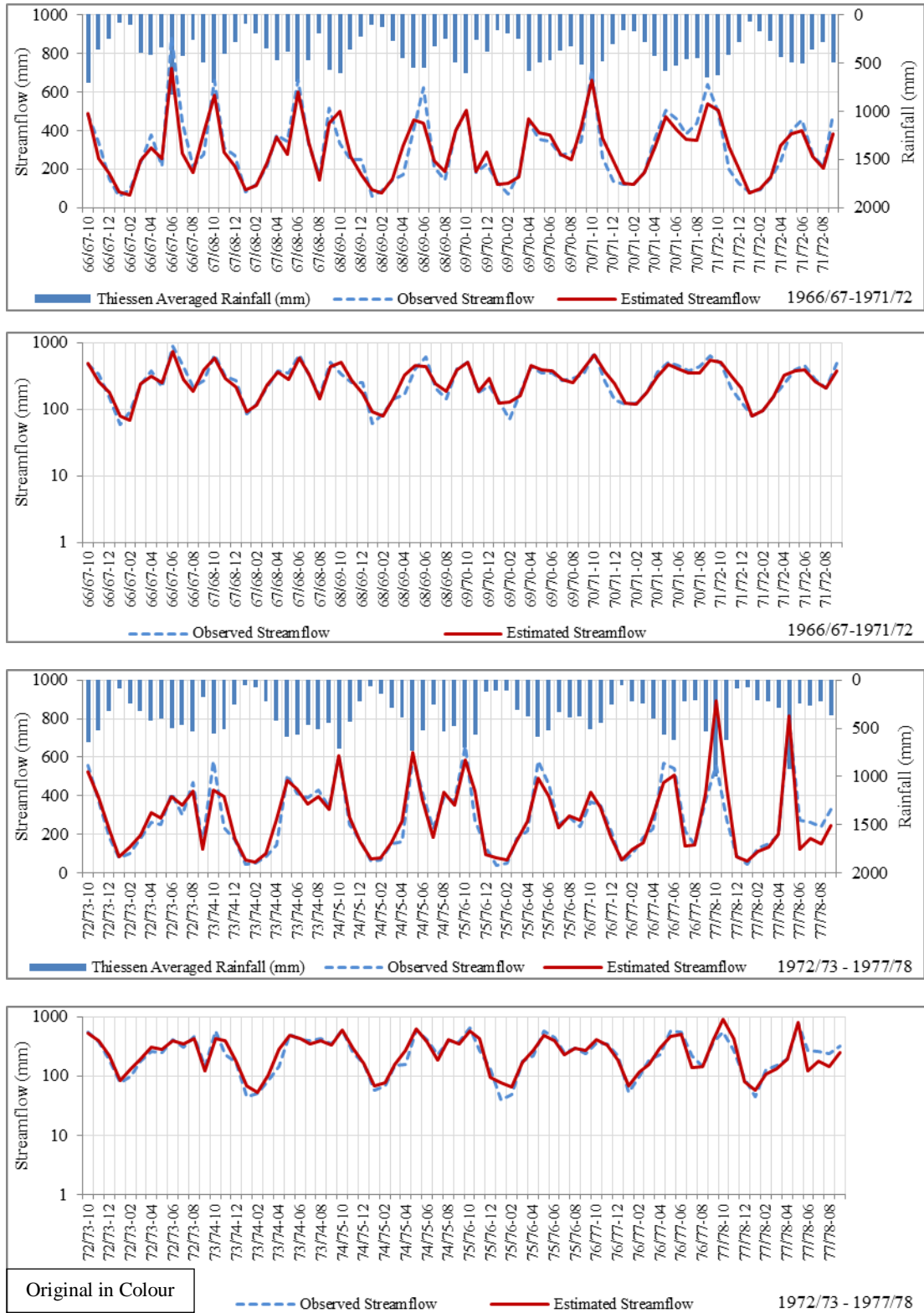


Figure E- 1: Outflow Hydrograph for Kelani Ganga 1966-1978 (Normal & Logarithmic Plot)

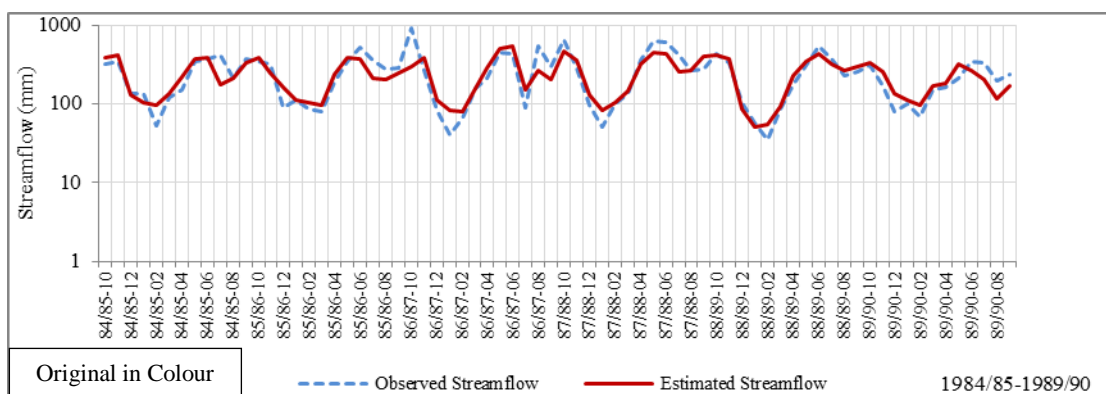
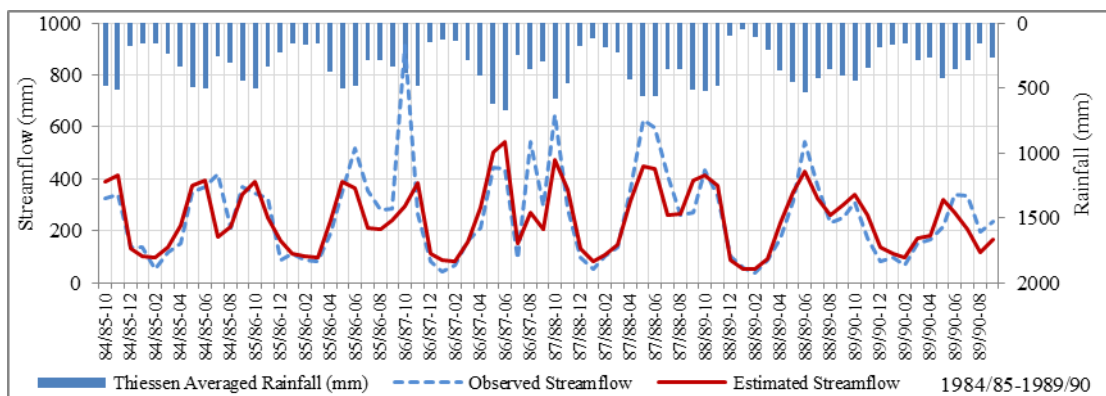
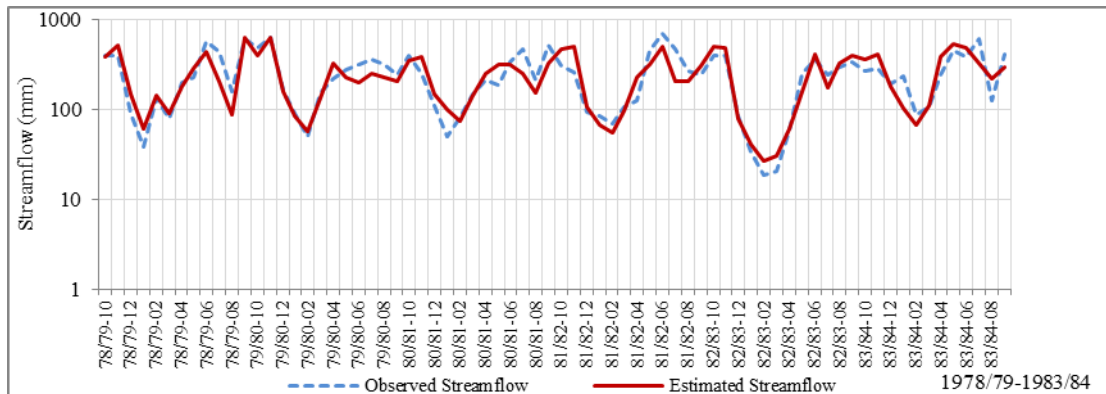
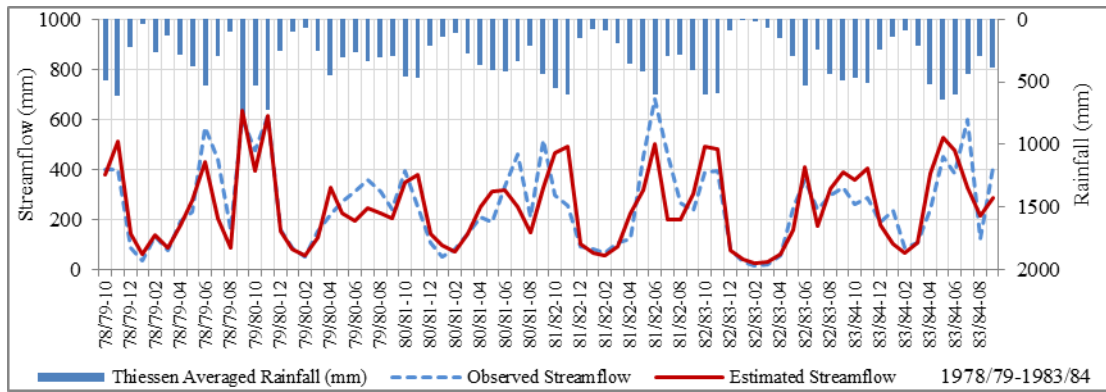


Figure E- 2: Outflow Hydrograph for Kelani Ganga 1978-1990 (Normal & Logarithmic Plot)

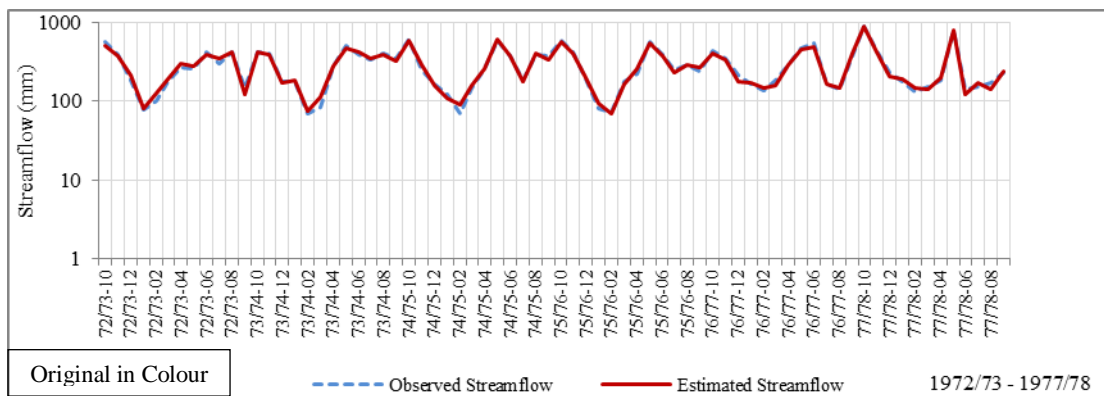
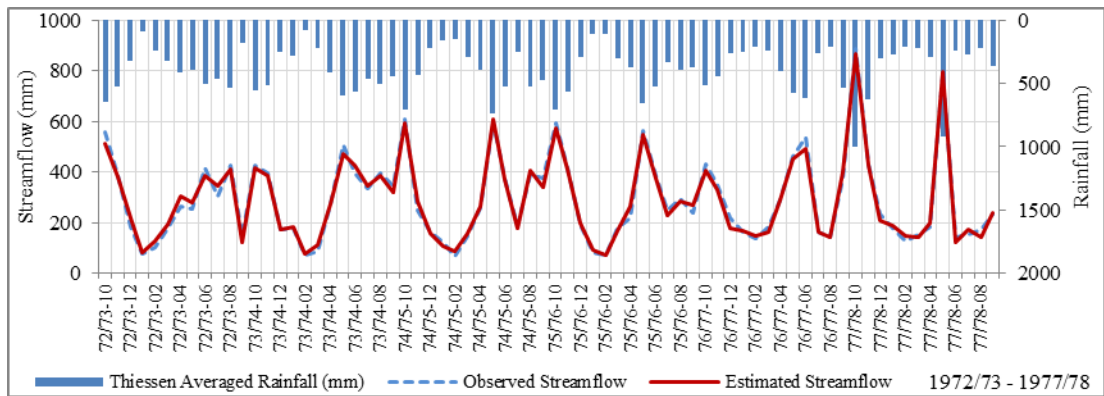
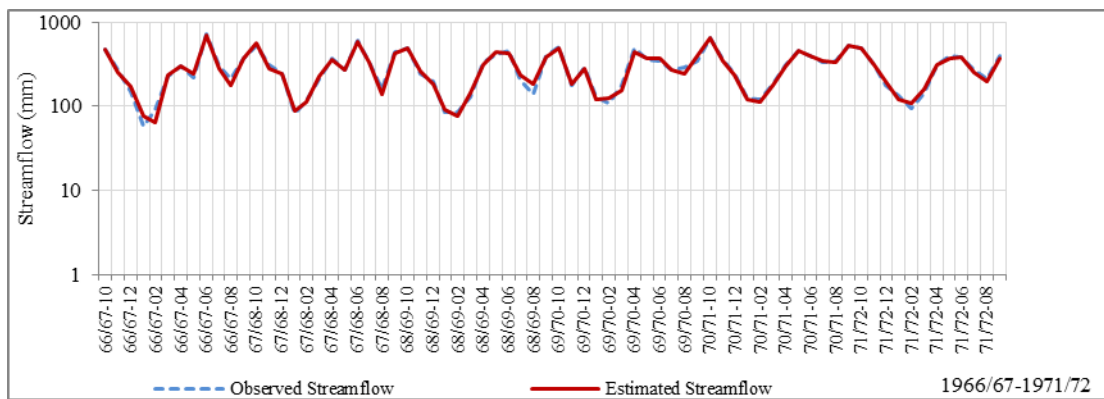
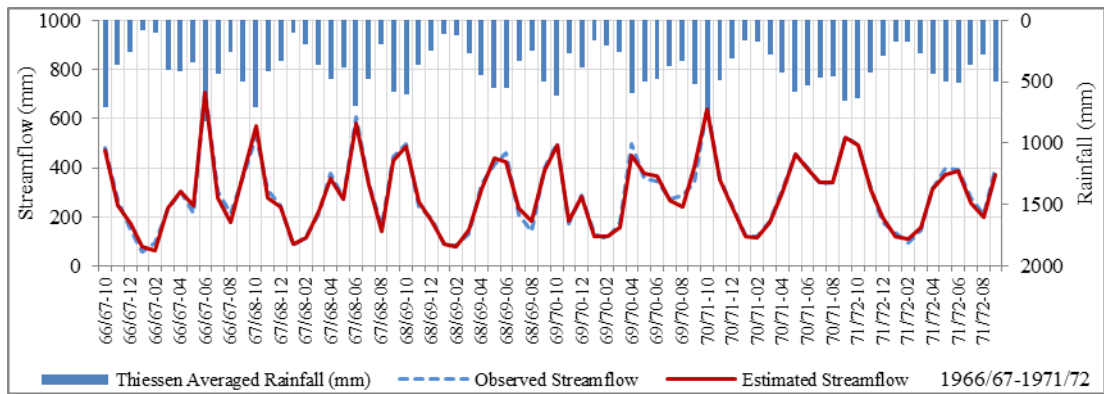


Figure E- 3: Outflow Hydrograph for Kelani Ganga 1966-1978 (Normal & Logarithmic Plot)

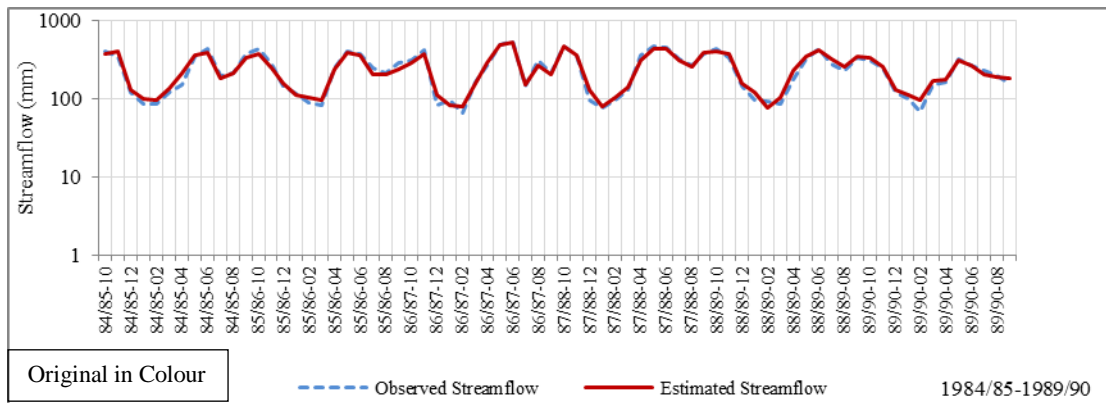
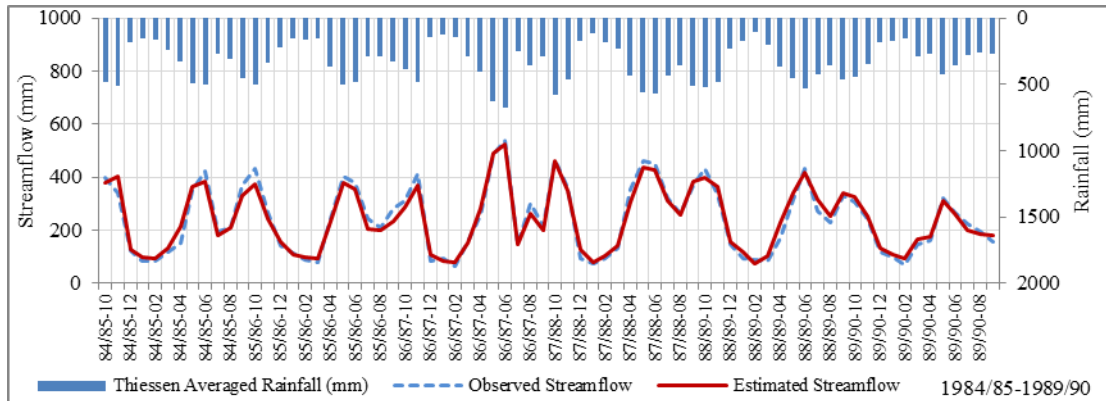
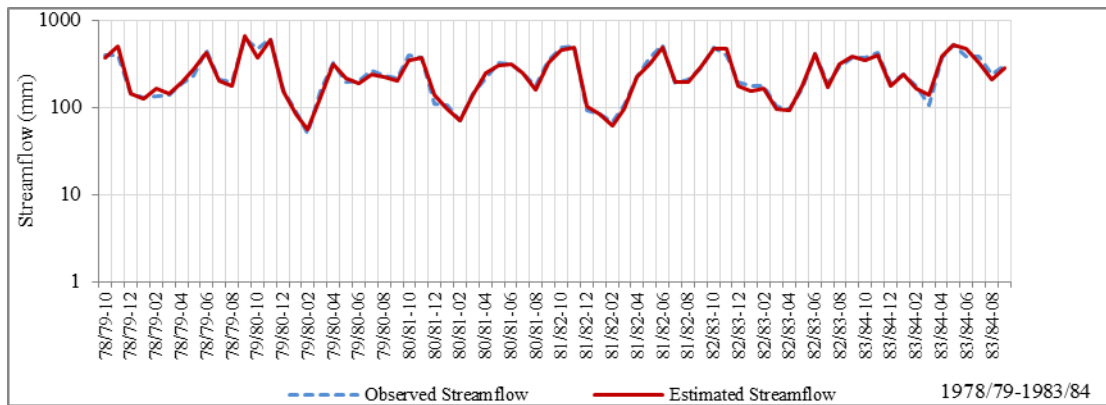
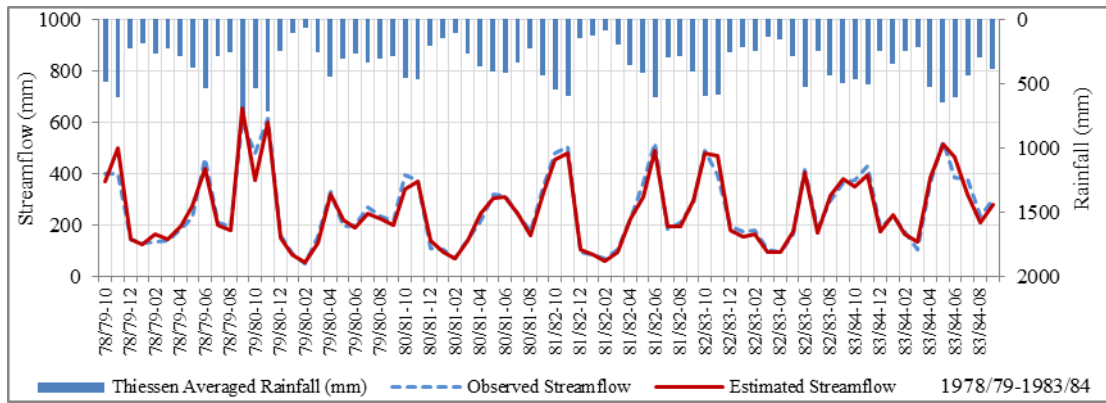


Figure E- 4: Outflow Hydrograph for Kelani Ganga 1978-1990 (Normal & Logarithmic Plot)

APPENDIX-F
RESULTSGIN GANGA
(CALIBRATION)

Figure F- 1: Outflow Hydrograph for Gin Ganga 1972-1982 (Normal & Logarithmic Plot)

Figure F- 2: Outflow Hydrograph for Gin Ganga 1982-1992 (Normal & Logarithmic Plot)

APPENDIX-F: CALIBRATION RESULTS GIN GANGA

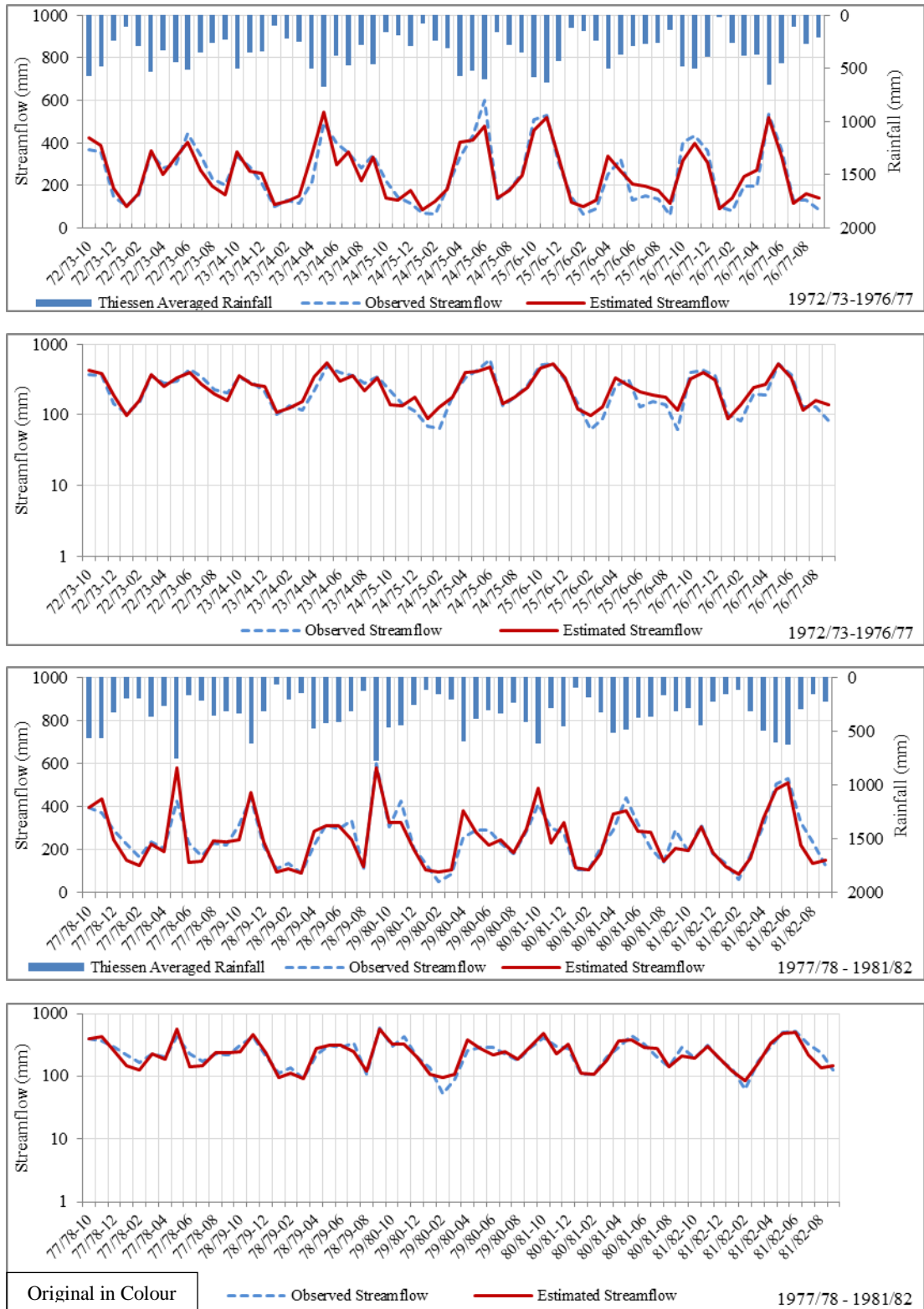


Figure E- 5: Outflow Hydrograph for Gin Ganga 1972-1982 (Normal & Logarithmic Plot)

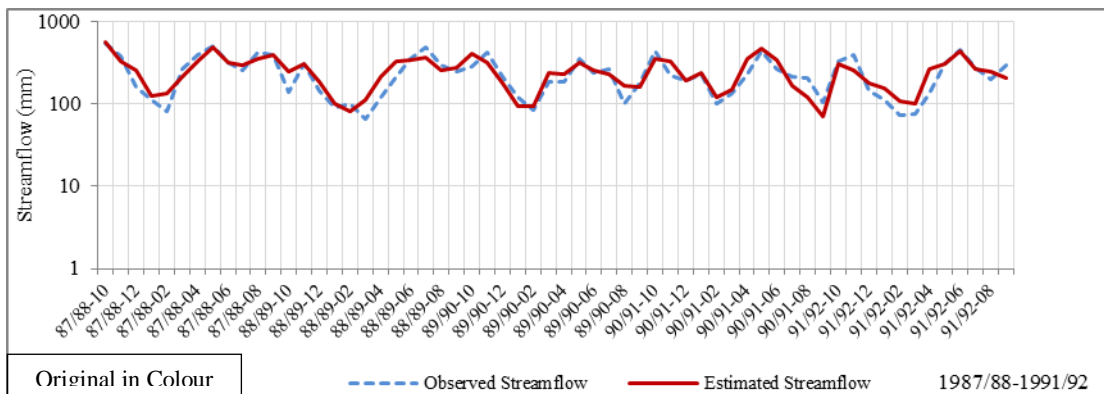
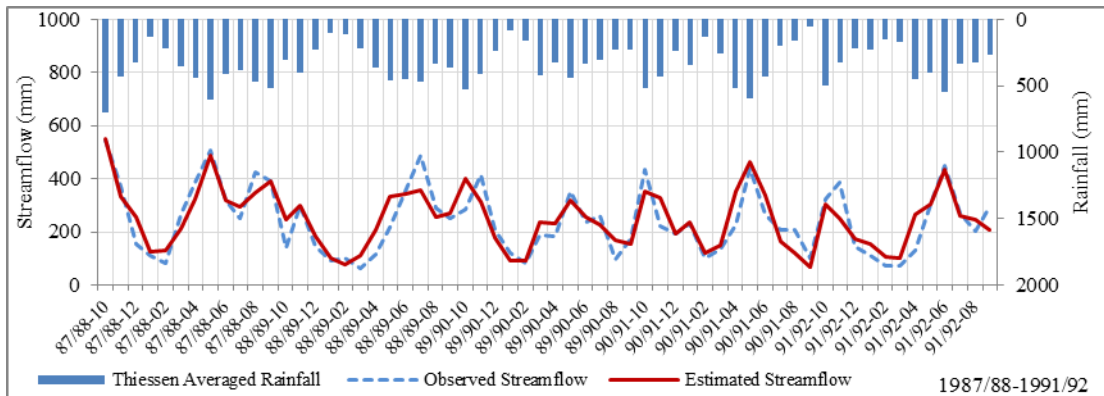
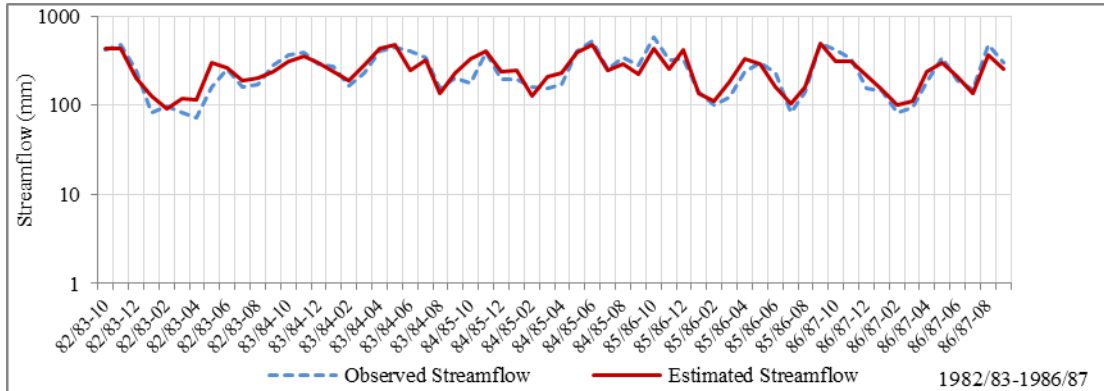
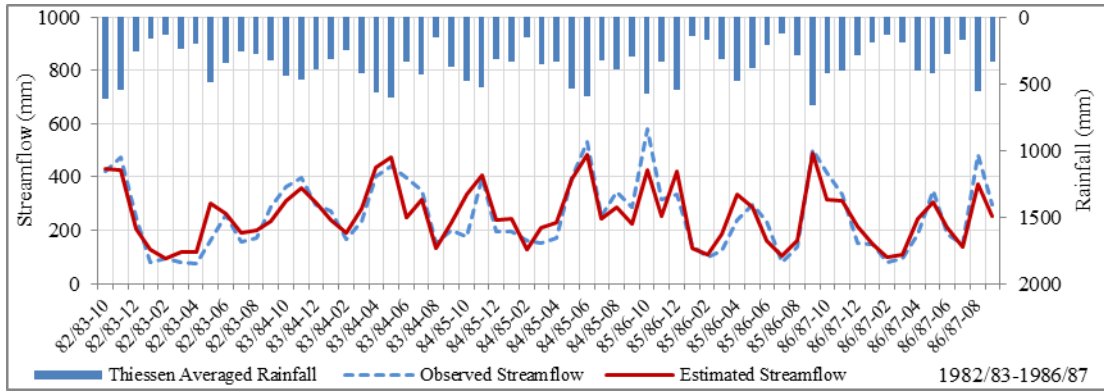


Figure E- 6: Outflow Hydrograph for Gin Ganga 1972-1992 (Normal & Logarithmic Plot)

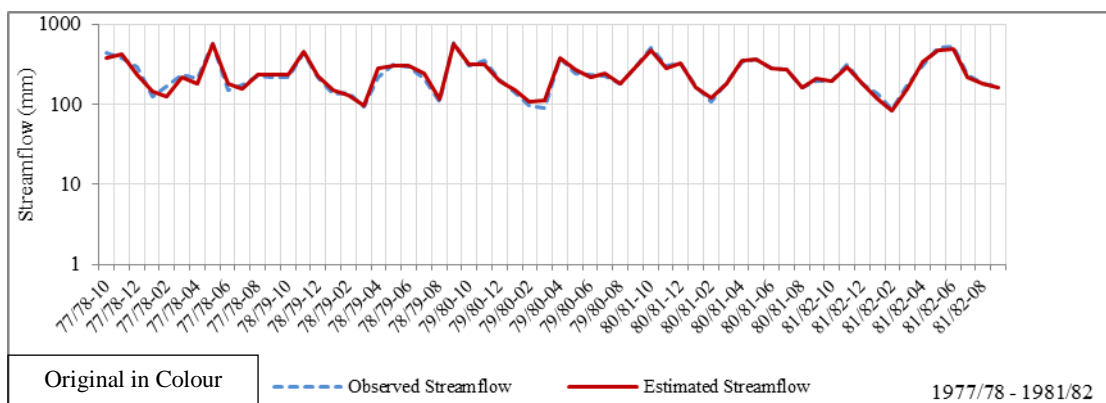
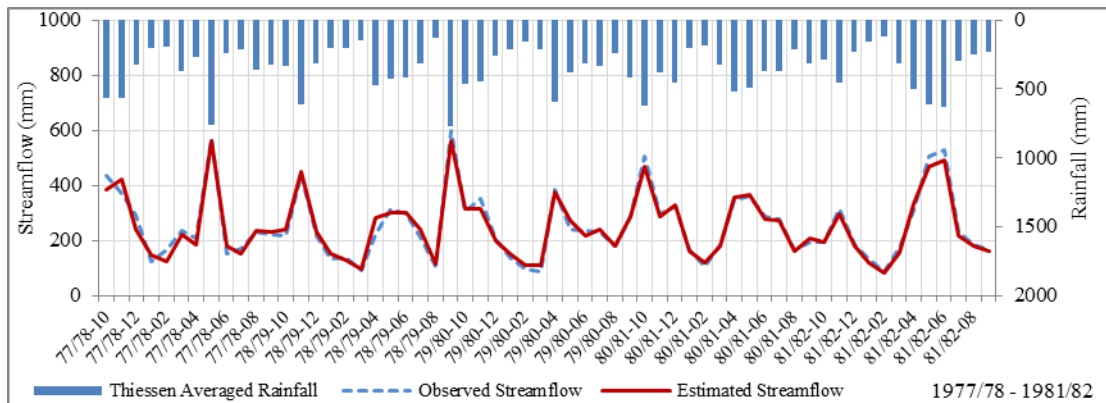
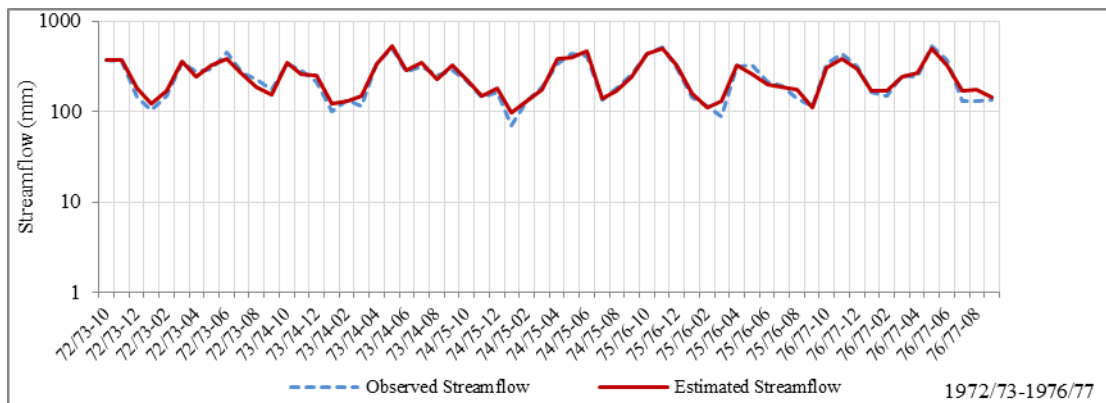
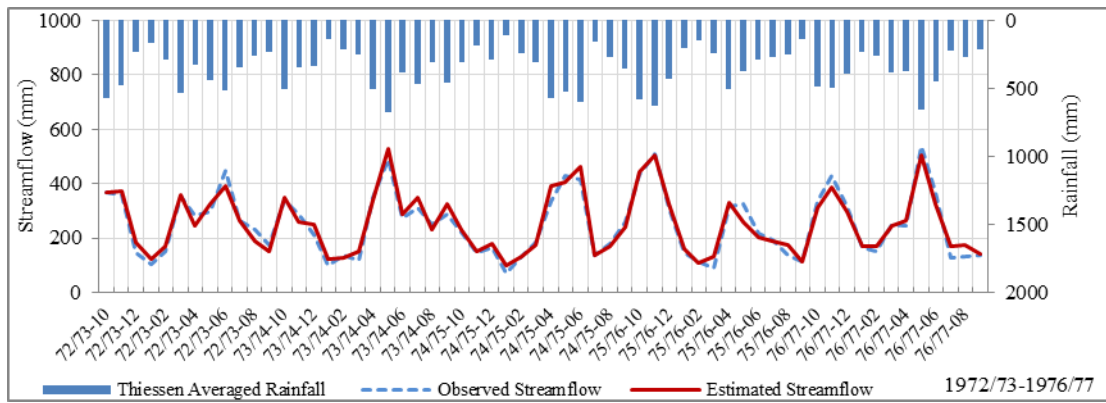


Figure F- 1: Outflow Hydrograph for Gin Ganga 1972-1982 (Normal & Logarithmic Plot)

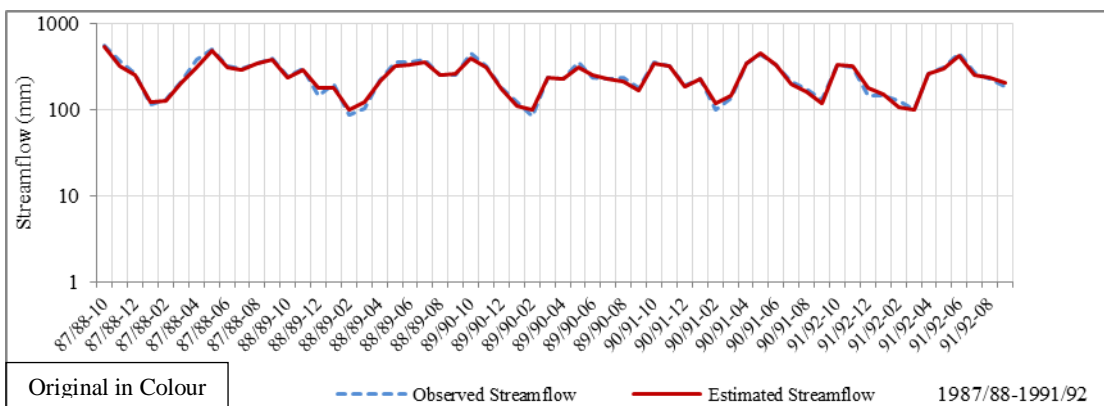
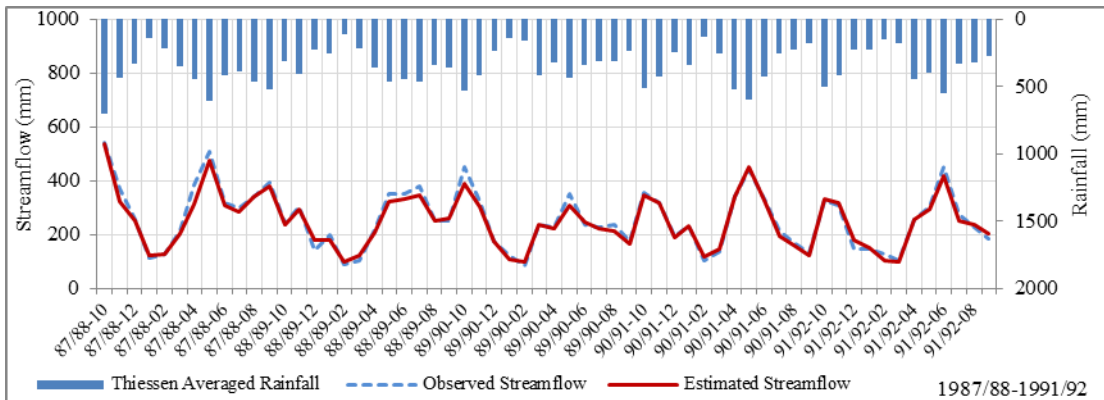
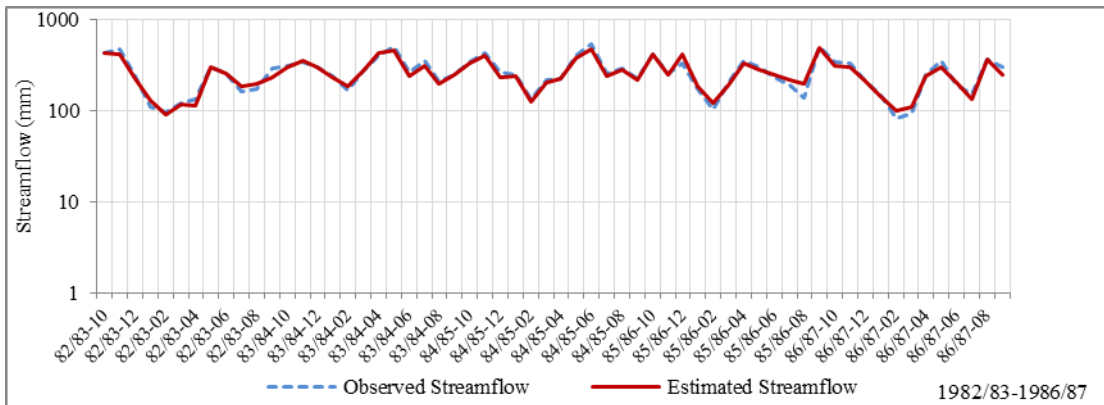
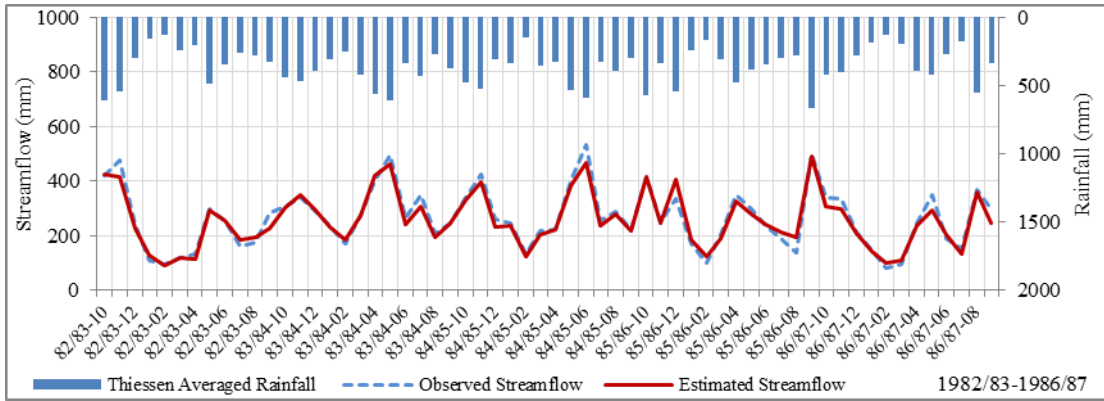


Figure F- 2: Outflow Hydrograph for Gin Ganga 1982-1992 (Normal & Logarithmic Plot)

APPENDIX-G
RESULTS KELANI GANGA
(VERIFICAITON)

Figure G- 1: Outflow Hydrograph for Kelani Ganga 1990-2002 (Normal & Logarithmic Plot)

Figure G- 2: Outflow Hydrograph for Kelani Ganga 2002-2014 (Normal & Logarithmic Plot)

APPENDIX-G: VERIFICATION RESULTS KELANI GANGA

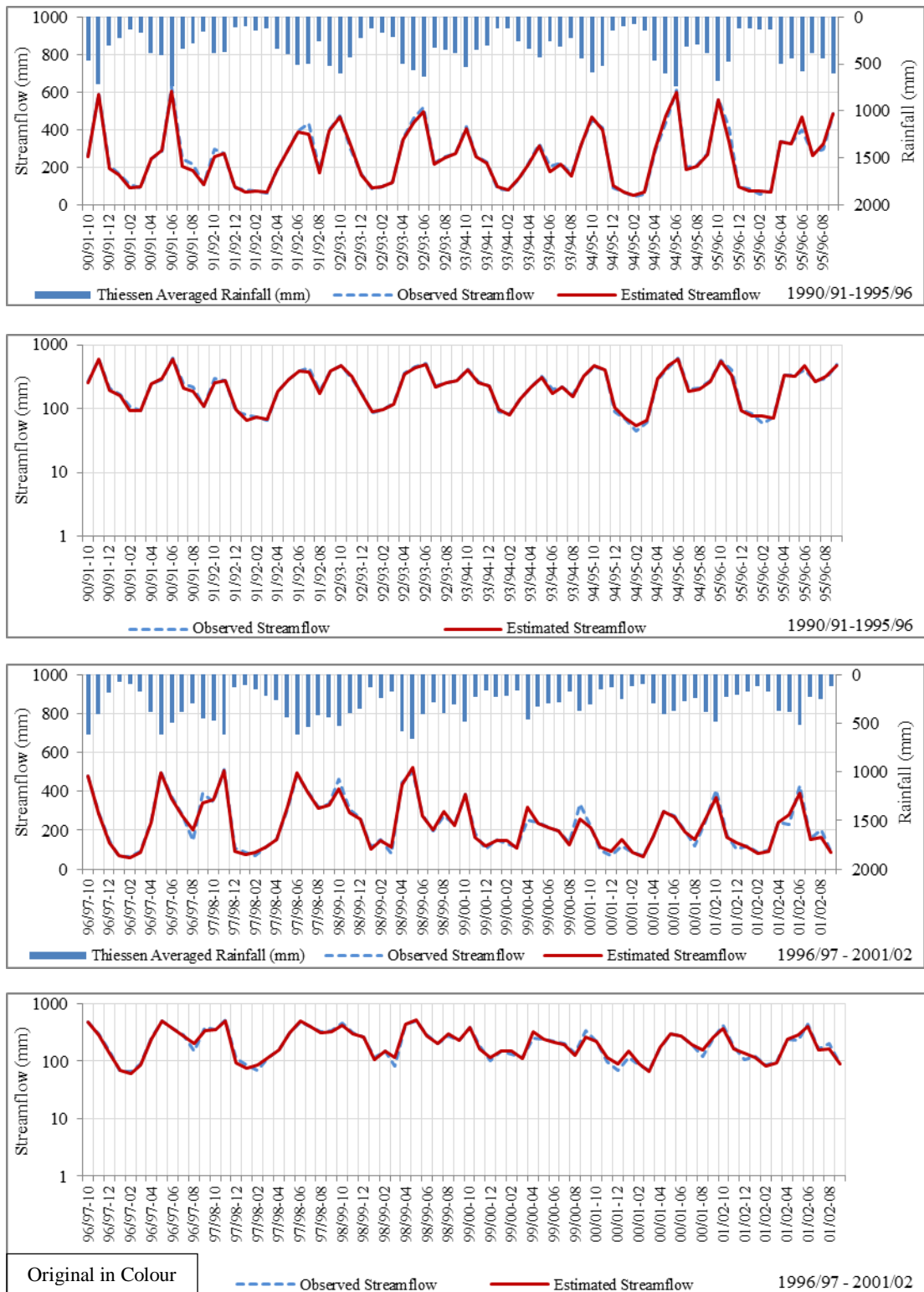


Figure G- 1: Outflow Hydrograph for Kelani Ganga 1990-2002 (Normal & Logarithmic Plot)

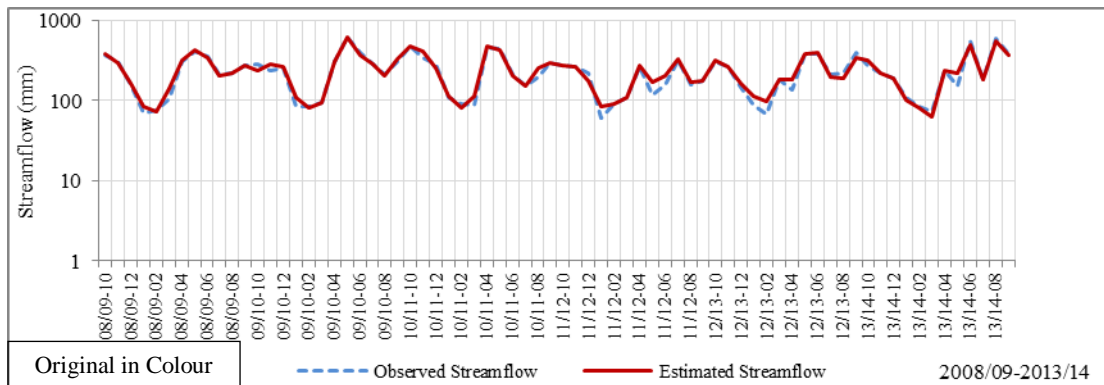
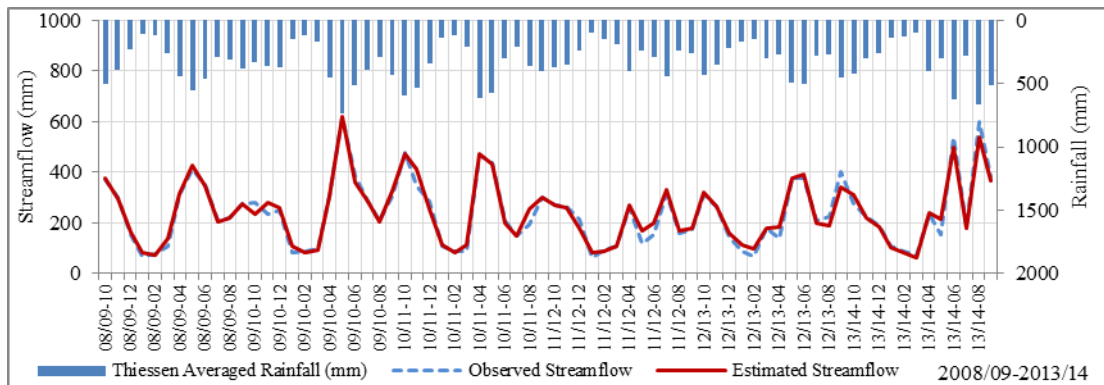
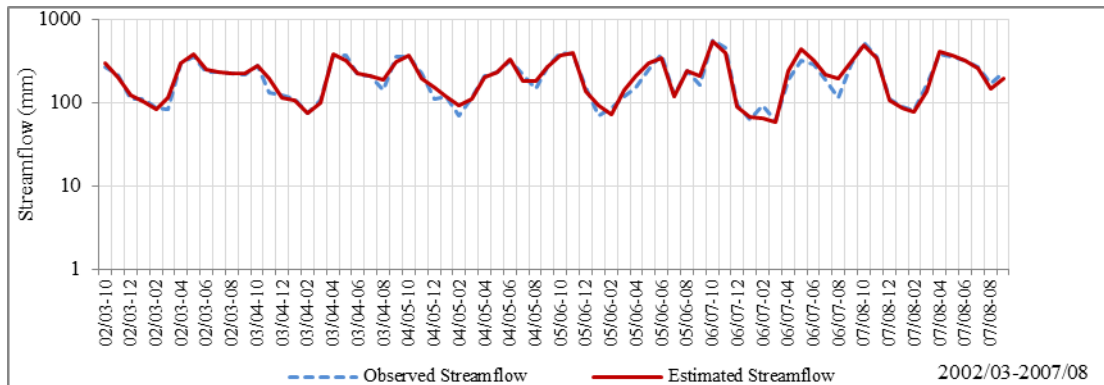
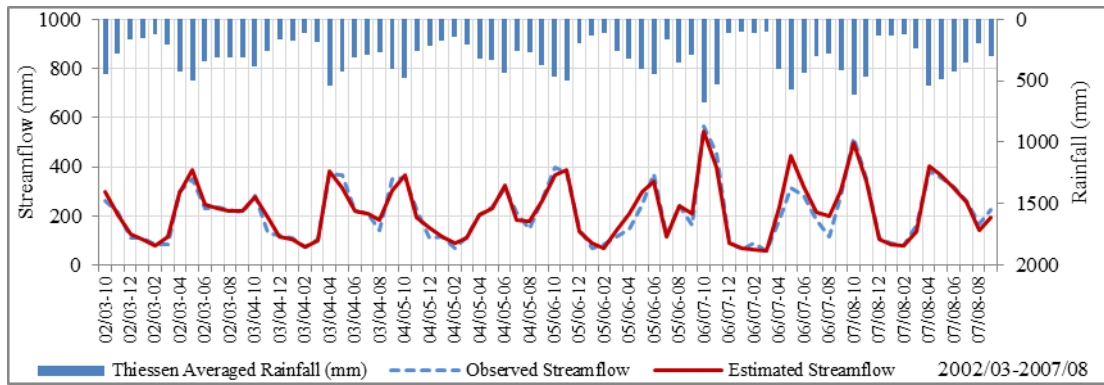


Figure G- 2: Outflow Hydrograph for Kelani Ganga 2002-2014 (Normal & Logarithmic Plot)

APPENDIX-H
RESULTS GIN GANGA
(VERIFICATION)

Figure H- 1: Outflow Hydrograph for Gin Ganga 1992-2002 (Normal & Logarithmic Plot)

Figure H- 2: Outflow Hydrograph for Gin Ganga 2002-2012 (Normal & Logarithmic Plot)

APPENDIX-H: VERIFICATION RESULTS GIN GANGA

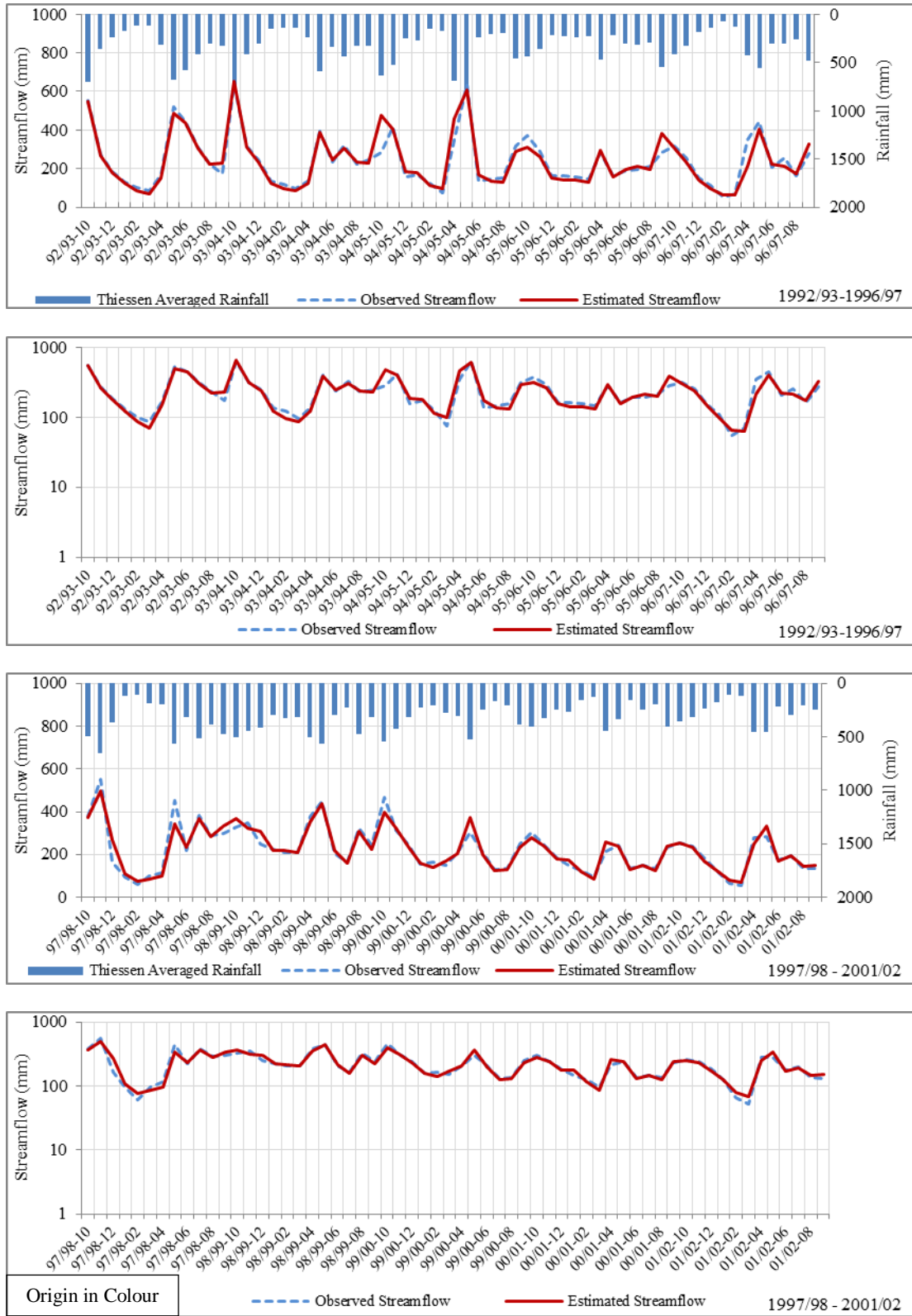


Figure H- 1: Outflow Hydrograph for Gin Ganga 1992-2002 (Normal & Logarithmic Plot)

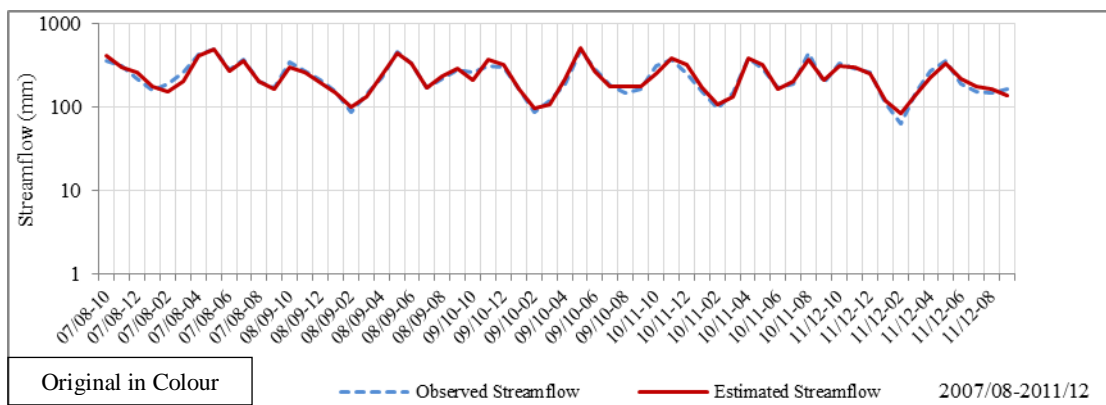
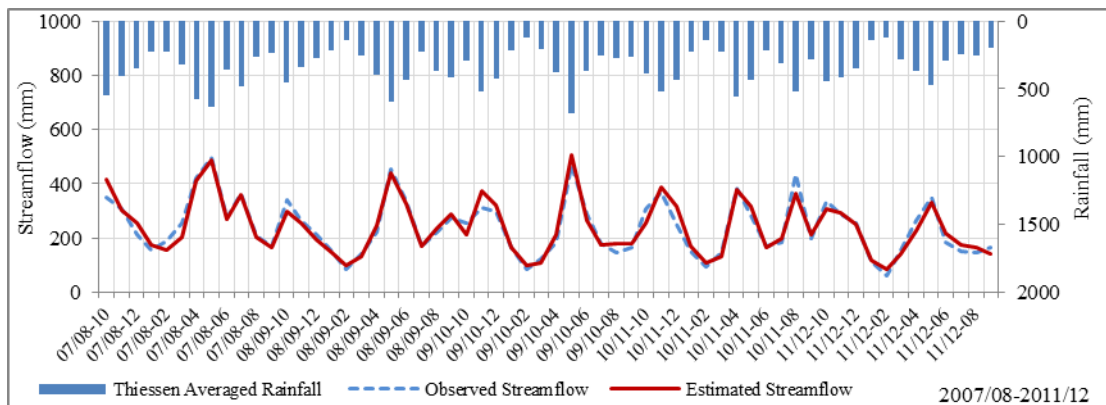
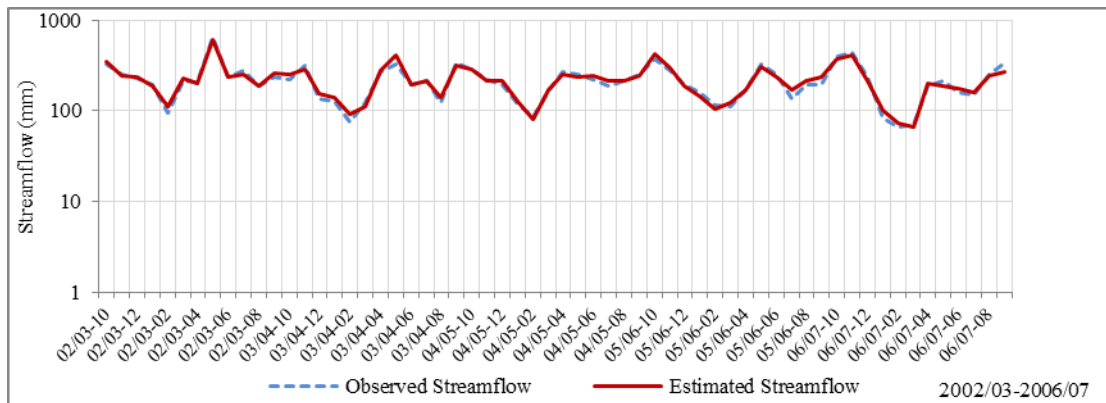
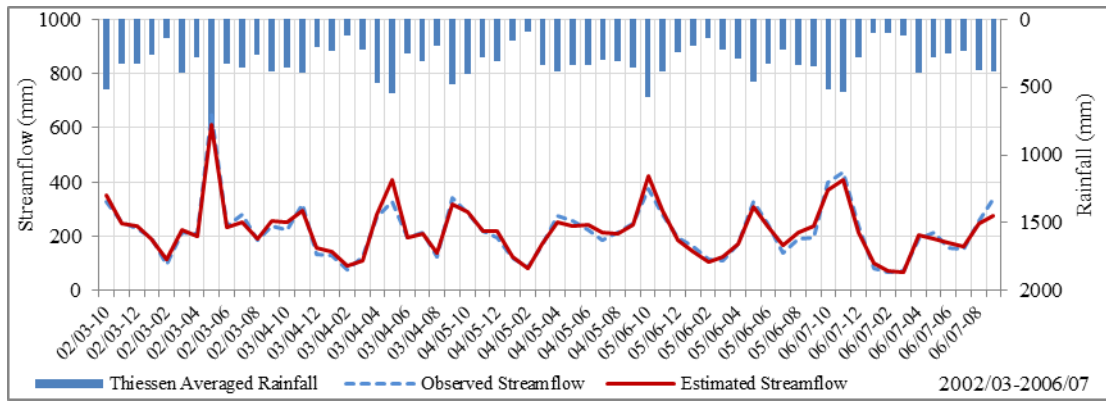


Figure H- 2: Outflow Hydrograph for Gin Ganga 2002-2012 (Normal & Logarithmic Plot)

APPENDIX-I
SPECIMEN CALCULATIONS

APPENDIX-I: SPECIMEN CALCULATIONS

Specimen Calculation for Kelani Ganga

Consider Year 1966/67-10 (First Row)

Model Input Data

Monthly Thiessen Averaged Rainfall $P(t) = 707.02$ mm

Monthly Pan Evaporation $EP(t) = 114.39$ mm

Model Parameter (Optimized)

Monthly Evaporation Coefficient $c = 0.46$

Field Capacity of Catchment $SC = 899.48$ mm

Actual Evapotranspiration is given by:

$$E(t) = c \times EP(t) \times \tanh\left(\frac{P(t)}{EP(t)}\right)$$

$$E(t) = 52.619 \text{ mm}$$

Condition Applied:

Actual Evaporation should not be less than Zero

If $(E(t) < 0, 0, E(t))$

Actual Evaporation should not be more than Pan Evaporation

If $(E(t) < EP(t), E(t), EP(t))$

The water content at the end of the (t-1)-th Month is given by $S(t-1)$

Initial $S(t-1)$ is obtained from 5-Hydrologic Cycle and next month $S(t-1)$ value is equal to $S(t)$ of the first month.

$$S(t-1) = 138.88 \text{ mm}$$

Monthly Runoff can be calculated by

$$Q(t) = (S(t-1) + P(t) - E(t)) \times \tanh\left[\frac{(S(t-1) + P(t) - E(t))}{SC}\right]$$

$$Q(t) = 561.156 \text{ mm}$$

Condition Applied:

Runoff should not be less than Zero

If $(Q(t) < 0, 0, Q(t))$

The water content at the end of the t-th Month can be computed by

$$S(t) = S(t - 1) + P(t) - E(t) - Q(t)$$

$$S(t) = 232.125 \text{ mm}$$

This can be used as the initial storage in the following month 1966/67-11

Condition Applied:

Soil Moisture Content should not be less than Zero.

If $(S(t) < 0, 0, S(t))$

Runoff Coefficient C can be calculated as;

$$C = \frac{Q(t)}{P(t)}$$

$$C = 0.794$$

The Average runoff coefficient in the calibration period is the average value in calibration data set

$$C_{avg} = 0.84$$

$$\text{Catchment Area} = 182.54 \text{ km}^2$$

Estimated Streamflow can be computed by;

$$Q = Q(t) \times C_{avg} \times A \times \frac{10^6}{(1000 \times 31 \times 24 \times 60 \times 60)}$$

$$Q = 32.125 \text{ m}^3/\text{s} \text{ or } 472.87 \text{ mm}$$

Error Estimation & Optimization

1. Nash Sutcliffe Efficiency (E)

Mean flow during calibration period $Q_c = 272.88$ mm

Observed Streamflow $Q_o = 479.35$ mm

Simulated Streamflow $Q_s = 472.87$ mm

$$F = (Q_o - Q_s)^2$$

$$F = (479.53 - 472.87)^2 = 41.99 \text{ mm}$$

$$F_o = (Q_o - Q_c)^2$$

$$F_o = (479.53 - 272.88)^2 = 42629.81 \text{ mm}$$

But sum of F_o and F is

$$F_o = 6348208.15 \text{ mm}$$

$$F = 172348.74 \text{ mm}$$

$$E = \frac{(F_o - F)}{F_o}$$

$$E = \frac{(6348208.15 - 172348.74)}{6348208.15}$$

$$E = 0.973$$

2. Mean Ratio of Absolute Error (MRAE)

$$\text{MRAE} = \left(\frac{1}{n} \right) \times \left[\sum_i \left(\frac{\text{Abs}(Q_o - Q_s)}{Q_o} \right) \right]$$

Sum of $(Q_o - Q_s)/Q_o = 24.31$ mm

$$\text{MRAE} = (1/288) * (24.31) = 0.0843$$

Specimen Calculation for Gin Ganga

Consider Year 1972/73-10 (First Row)

Model Input Data

Monthly Thiessen Averaged Rainfall $P(t) = 574.70\text{mm}$

Monthly Pan Evaporation $EP(t) = 104.37\text{mm}$

Model Parameter (Optimized)

Monthly Evaporation Coefficient $c = 0.51$

Field Capacity of Catchment $SC = 1322\text{mm}$

Actual Evapotranspiration is given by:

$$E(t) = c \times EP(t) \times \tanh\left(\frac{P(t)}{EP(t)}\right)$$

$$E(t) = 53.23\text{mm}$$

Condition Applied:

Actual Evaporation should not be less than Zero

$$\text{If } (E(t) < 0, 0, E(t))$$

Actual Evaporation should not be more than Pan Evaporation

$$\text{If } (E(t) < EP(t), E(t), EP(t))$$

The water content at the end of the (t-1)-th Month is given by $S(t-1)$

Initial $S(t-1)$ is obtained from 5-Hydrologic Cycle and next month $S(t-1)$ value is equal to $S(t)$ of the first month.

$$S(t-1) = 280\text{mm}$$

Monthly Runoff can be calculated by

$$Q(t) = (S(t-1) + P(t) - E(t)) \times \tanh\left[\frac{(S(t-1) + P(t) - E(t))}{SC}\right]$$

$$Q(t) = 434.05\text{mm}$$

Condition Applied:

Runoff should not be less than Zero

If $(Q(t) < 0, 0, Q(t))$

The water content at the end of the t-th Month can be computed by

$$S(t) = S(t - 1) + P(t) - E(t) - Q(t)$$

$$S(t) = 367.42\text{mm}$$

This can be used as the initial storage in the following month 1972/73-11

Condition Applied:

Soil Moisture Content should not be less than Zero.

If $(S(t) < 0, 0, S(t))$

Runoff Coefficient C can be calculated as;

$$C = \frac{Q(t)}{P(t)}$$

$$C = 0.755$$

The Average runoff coefficient in the calibration period is the average value in calibration data set

$$C_{\text{avg}} = 0.84$$

$$\text{Catchment Area} = 368.75\text{km}^2$$

Estimated Streamflow can be computed by;

$$Q = Q(t) \times C_{\text{avg}} \times A \times \frac{10^6}{(1000 \times 31 \times 24 \times 60 \times 60)}$$

$$Q = 50.36\text{m}^3/\text{s} \text{ or } 365.76\text{mm}$$

Error Estimation & Optimization

1. Nash Sutcliffe Efficiency (E)

Mean flow during calibration period $Q_c = 256.07\text{mm}$

Observed Streamflow $Q_o = 368.27\text{mm}$

Simulated Streamflow $Q_s = 365.76\text{mm}$

$$F = (Q_o - Q_s)^2$$

$$F = (368.27 - 365.76)^2 = 6.30\text{mm}$$

$$F_o = (Q_o - Q_c)^2$$

$$F_o = (368.27 - 256.07)^2 = 12588.764\text{mm}$$

But sum of F_o and F is

$$F_o = 3143183.115\text{mm}$$

$$F = 141473.6304 \text{ mm}$$

$$E = \frac{(F_o - F)}{F_o}$$

$$E = \frac{(3143183.115 - 141473.6304)}{3143183.115}$$

$$E = 0.955$$

2. Mean Ratio of Absolute Error (MRAE)

$$\text{MRAE} = \left(\frac{1}{n}\right) \times \left[\sum_i \left(\frac{\text{Abs}(Q_o - Q_s)}{Q_o} \right) \right]$$

Sum of $(Q_o - Q_s)/Q_o = 19.711\text{mm}$

$$\text{MRAE} = (1/240) * (19.711) = 0.082$$