

## REFERENCES

American Association of State Highway and Transportation Officials (AASHTO), *A Policy on Geometric Design of Highways and Streets*, Washington, D.C.: AASHTO, 1994.

Austrroads 2007, *Guide to traffic management: part 6: intersections, interchanges and crossings*, AGTM06/07, Austrroads, Sydney, NSW.

Austrroads. *Guide to Traffic Engineering Practice, Part 6—Roundabouts*. Sydney, Australia: Austrroads, 1993.

Brilon, W., Studies on roundabouts in Germany: Lessons learned. In "International Roundabout Conference", Carmel, Indiana, May 2011.

Department of Transport (United Kingdom), *Geometric Design of Roundabouts*, TD 16/93, September 1993.



University of Moratuwa, Sri Lanka.  
Electronic Theses & Dissertations  
[www.lib.mrt.ac.lk](http://www.lib.mrt.ac.lk)

Douglas, C., 2011, Traffic Control At The Intersection Of Muskoka Road 42 (Taylor Road) And Cedar Lane In The Town Of Bracebridge, The district municipality of Muskoka, Engineering and public works department.

Furtado, G., Accommodating vulnerable road users in roundabout design, "2004 TAC Annual Conference", 2004.

Geometric design for Dubai roads, Dubai, 2002, pp 12-24.

Gilbert Gedeon, *P. E. Roundabout Geometric Design*. Retrieved 11 June 2014

Hesch, M., Quantitatively determining the emissions reduction benefits of the replacement of a signalized intersection by a roundabout. “*Student research paper presented at the Upstate New York Sub-Regional Junior Science and Humanities Symposium*”, Academy of the Holy Name, Albany, NY, 2007.

Queensland Department of Main Roads 2006, ‘*Roundabouts*’, in *Road planning and design manual, chapter 14*, Queensland Department of Main Roads, Brisbane , QLD, Retrieved 27 March 2014,

Ren, L., Qu, X., Wang, S. & Guan, H. (2014). Investigation on entry capacities of single-lane roundabouts. *Applied Mechanics and Materials*, 505-506 497-500.

Robinson, B. W., & Rodegerdts, L. A., Capacity and performance of roundabouts: A summary of recommendations in the FHWA roundabout guide, In ”*Proc., 4th Int. Symp. on Highway Capacity*”, National Research Council, 2000-June, pp. 422-433,.

Robinson, B. W., Rodegerdts, L., Scarborough, W., Kittelson, W., Troutbeck, R., Brilon, W. & Jacquemart, G., 2000, “*Roundabouts: An informational guide*”, (No. FHWA-RD-00-067).



University of Moratuwa, Sri Lanka  
Electronic Theses & Dissertations  
www.lib.mrt.ac.lk

Rodegerdts, L., “*Roundabouts in the United States*”, Transportation Research Board, 2007, Vol. 572.

Roundabout Benefits, *Washington State Department of Transportation*. Retrieved 12 July 2014.

State of Maryland department of transportation state high way administration , 1995, roundabout design guidelines.

TRB. "*Roundabouts: An Informational Guide*". NCHRP Report 672. Transportation Research Board, National Research Council, Washington, D.C., USA, in cooperation with US Department of Transportation, Federal Highway Administration.

United States Department of Transportation (US DOT), *Roundabouts: An informational guide*, USA, 2001, pp 145-165.

Wiki, Roundabouts, 17 July 2015, Available from:  
<<https://en.wikipedia.org/wiki/Roundabout>>. [3 August 2015].



University of Moratuwa, Sri Lanka.  
Electronic Theses & Dissertations  
[www.lib.mrt.ac.lk](http://www.lib.mrt.ac.lk)

## APPENDIX

### APPENDIX 1



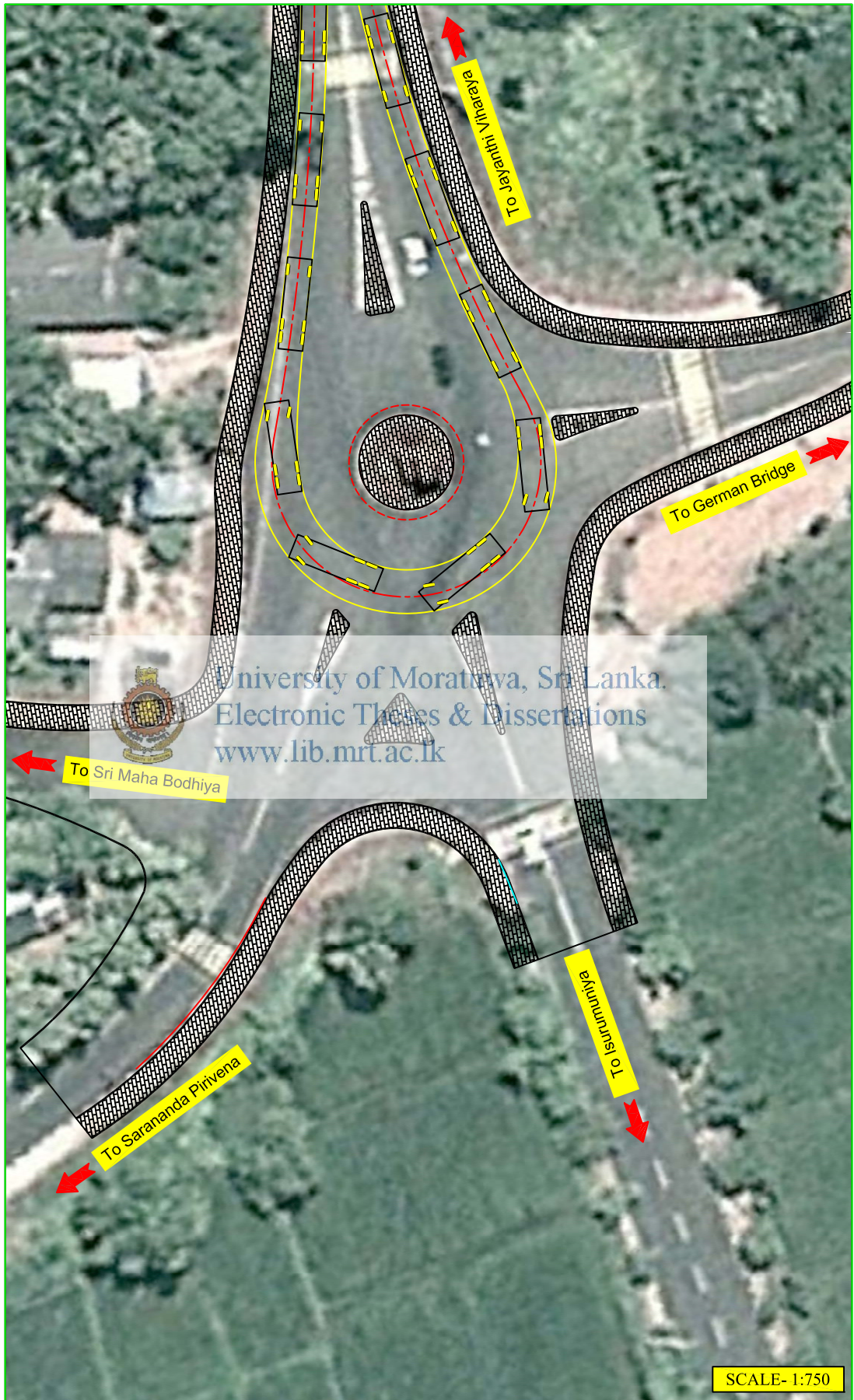
University of Moratuwa, Sri Lanka.  
Electronic Theses & Dissertations  
[www.lib.mrt.ac.lk](http://www.lib.mrt.ac.lk)





AN-01, Roundabout at Jayanthi Viharaya-Anuradhapura





AN-02, Roundabout at Sri Sarananda Viharaya-Anuradhapura



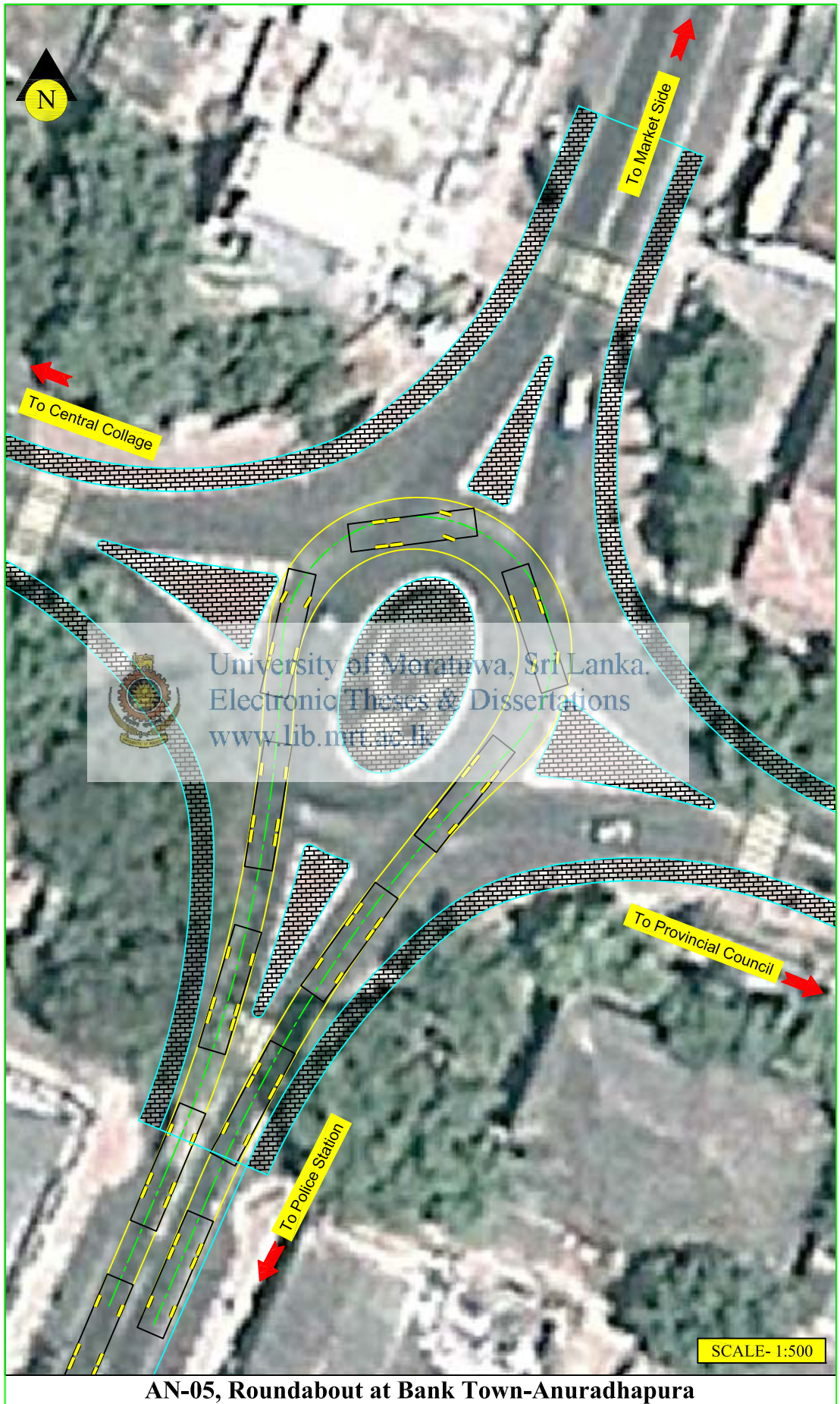






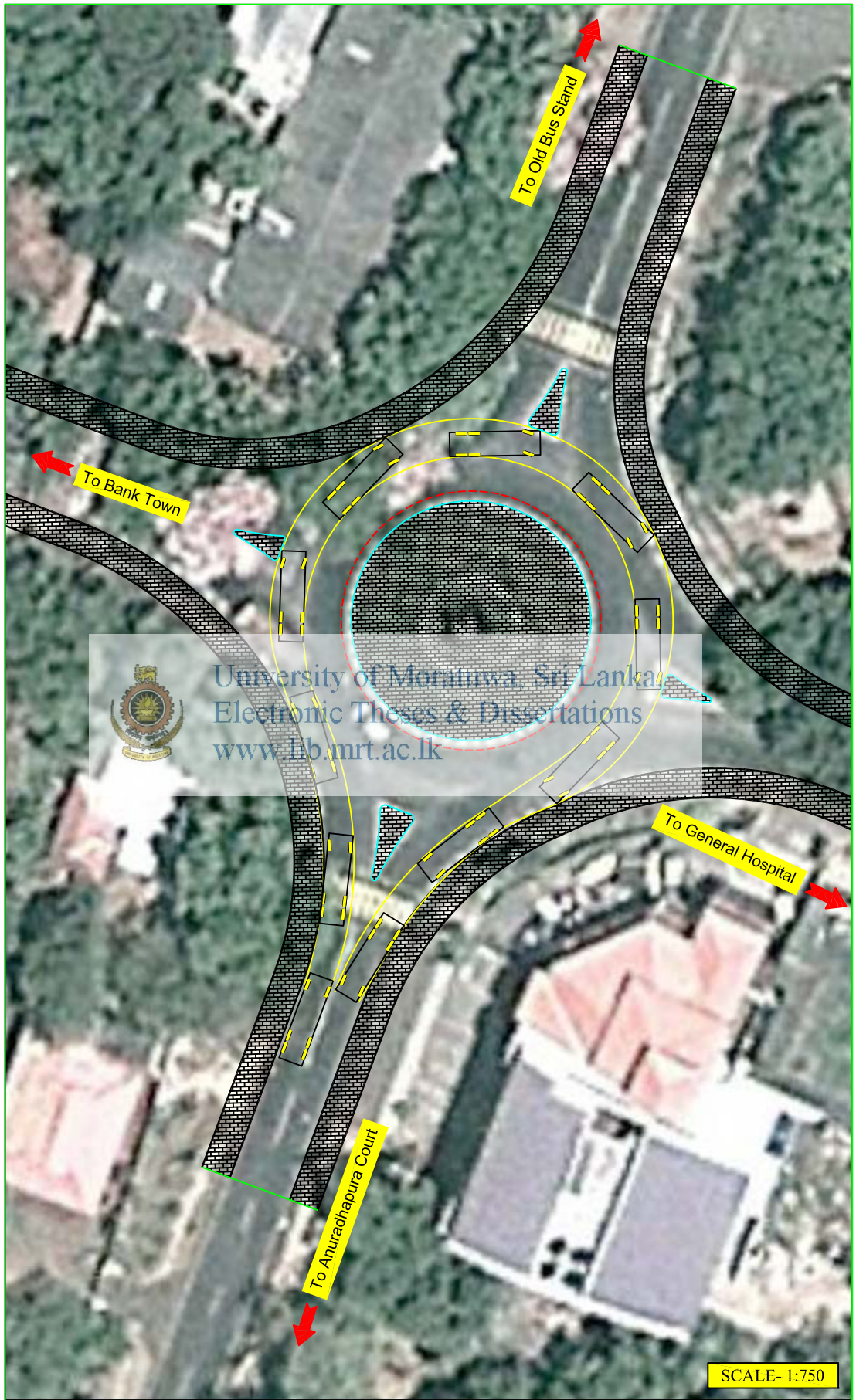
AN-04, Roundabout at Dahaiyagama Junction-Anuradhapura





**AN-05, Roundabout at Bank Town-Anuradhapura**





 University of Moratuwa, Sri Lanka  
Electronic Theses & Dissertations  
[www.lib.mrt.ac.lk](http://www.lib.mrt.ac.lk)

SCALE- 1:750

**AN-06, Roundabout at Provincial Council-Anuradhapura**





**AN-07, Roundabout at Pothanagama Junction-Anuradhapura**





University of Moratuwa, Sri Lanka.  
Electronic Theses & Dissertations  
[www.lib.mrt.ac.lk](http://www.lib.mrt.ac.lk)

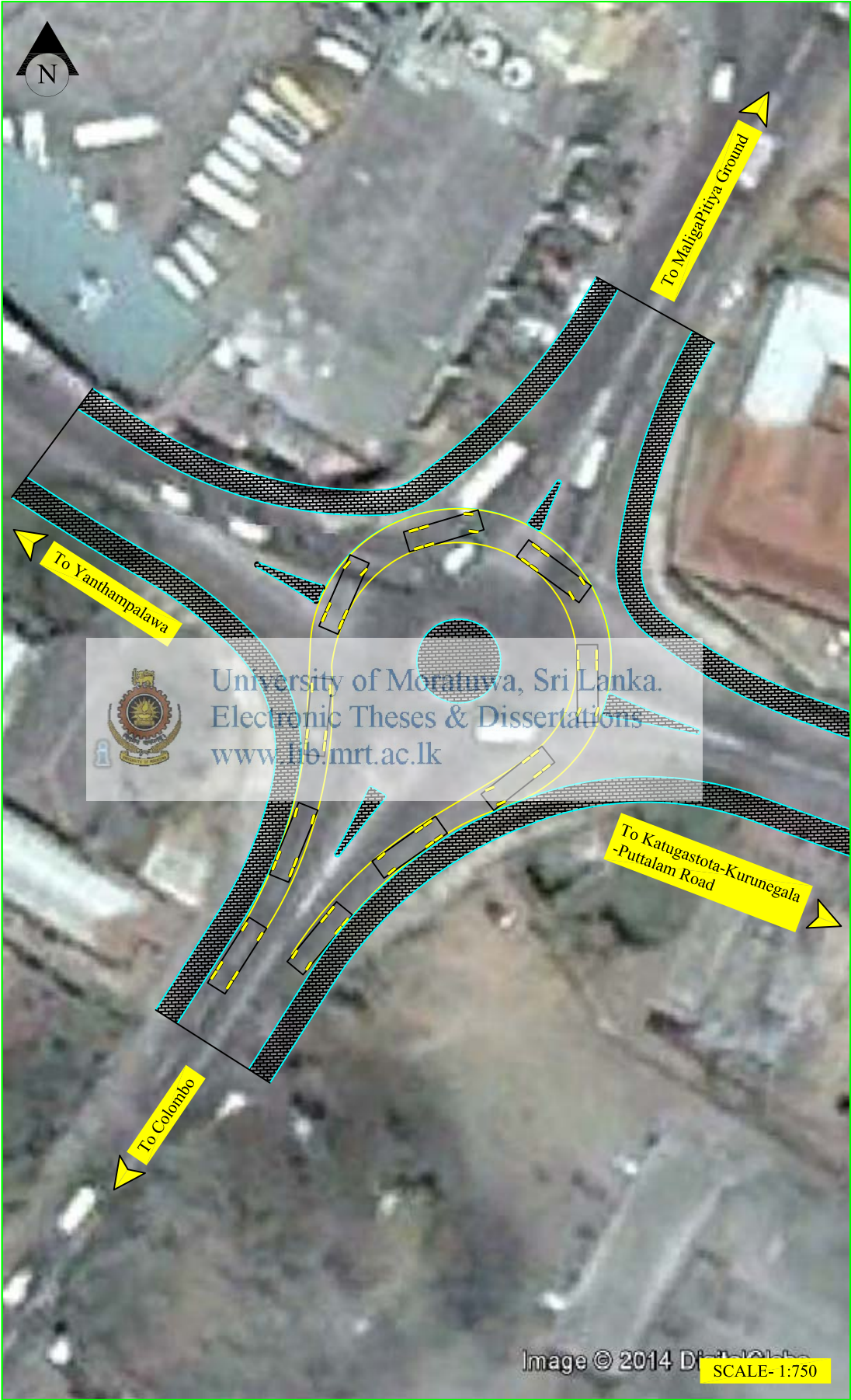
SCALE- 1:750

Imagery Date: 7/28/2015

Image © 2014 DigitalGlobe

**AN-08, Roundabout at Talawa Town-Talawa**






 University of Moratuwa, Sri Lanka.  
Electronic Theses & Dissertations  
[www.lib.mrt.ac.lk](http://www.lib.mrt.ac.lk)

Image © 2014 DigitalGlobe  
SCALE- 1:750

**KG-01, Roundabout at Clock Tower-Kurunegala**



**KG-02, Roundabout at Kadurugas Junction-Kurunegala**





**KG-03, Roundabout at Puwakgas Junction-Kurunegala**



**KG-04, Roundabout at Dalandagama Junction-Kurunegala**





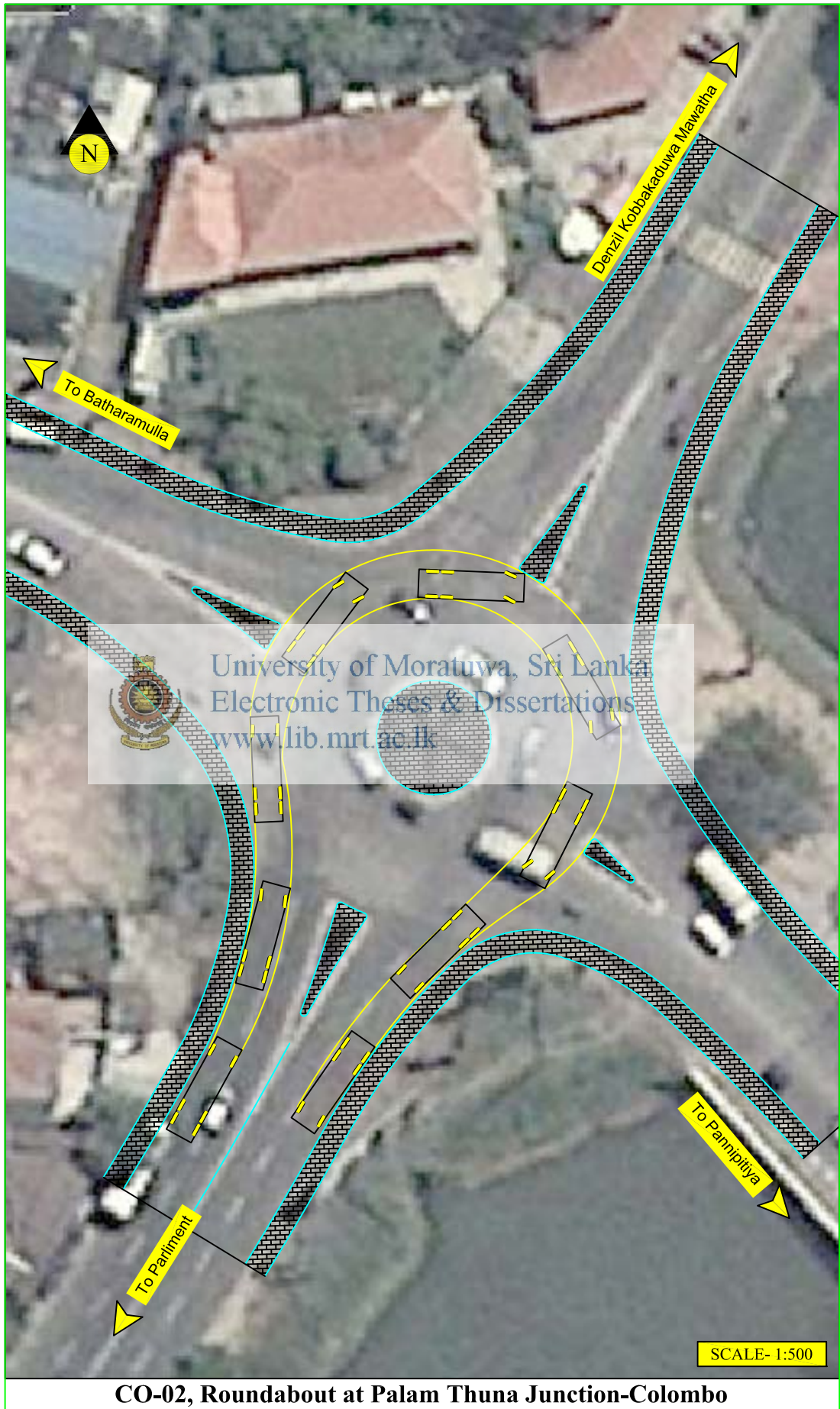
University of Moratuwa, Sri Lanka.  
Electronic Theses & Dissertations  
[www.lib.mrt.ac.lk](http://www.lib.mrt.ac.lk)

SCALE- 1:750

Imagery Date:

11/22/2013

CO-01, Roundabout at Thalawathugoda-Colombo



**CO-02, Roundabout at Palam Thuna Junction-Colombo**





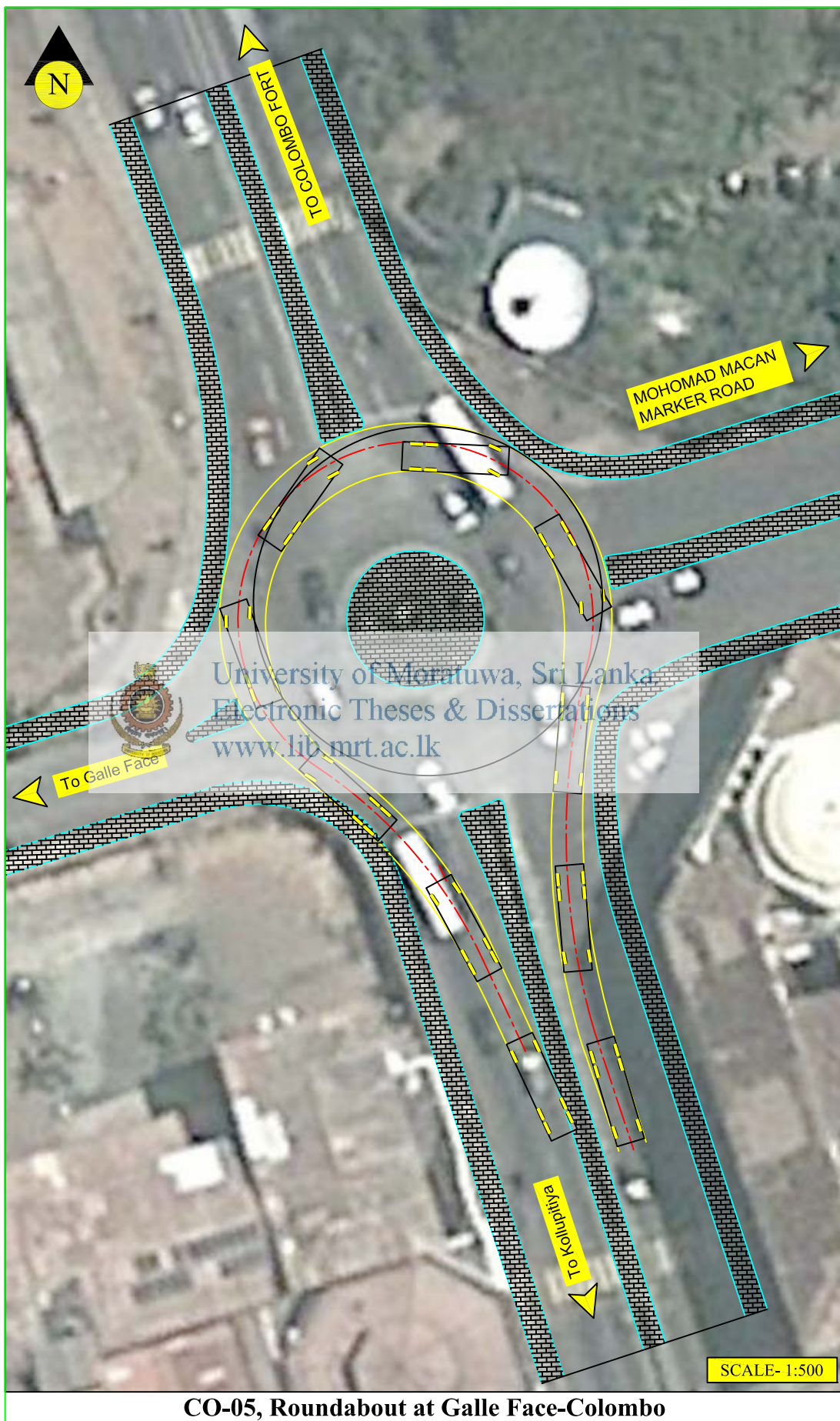
**CO-03, Roundabout at Borella Cemetary-Colombo**





CO-04, Roundabout at Lipton-Colombo



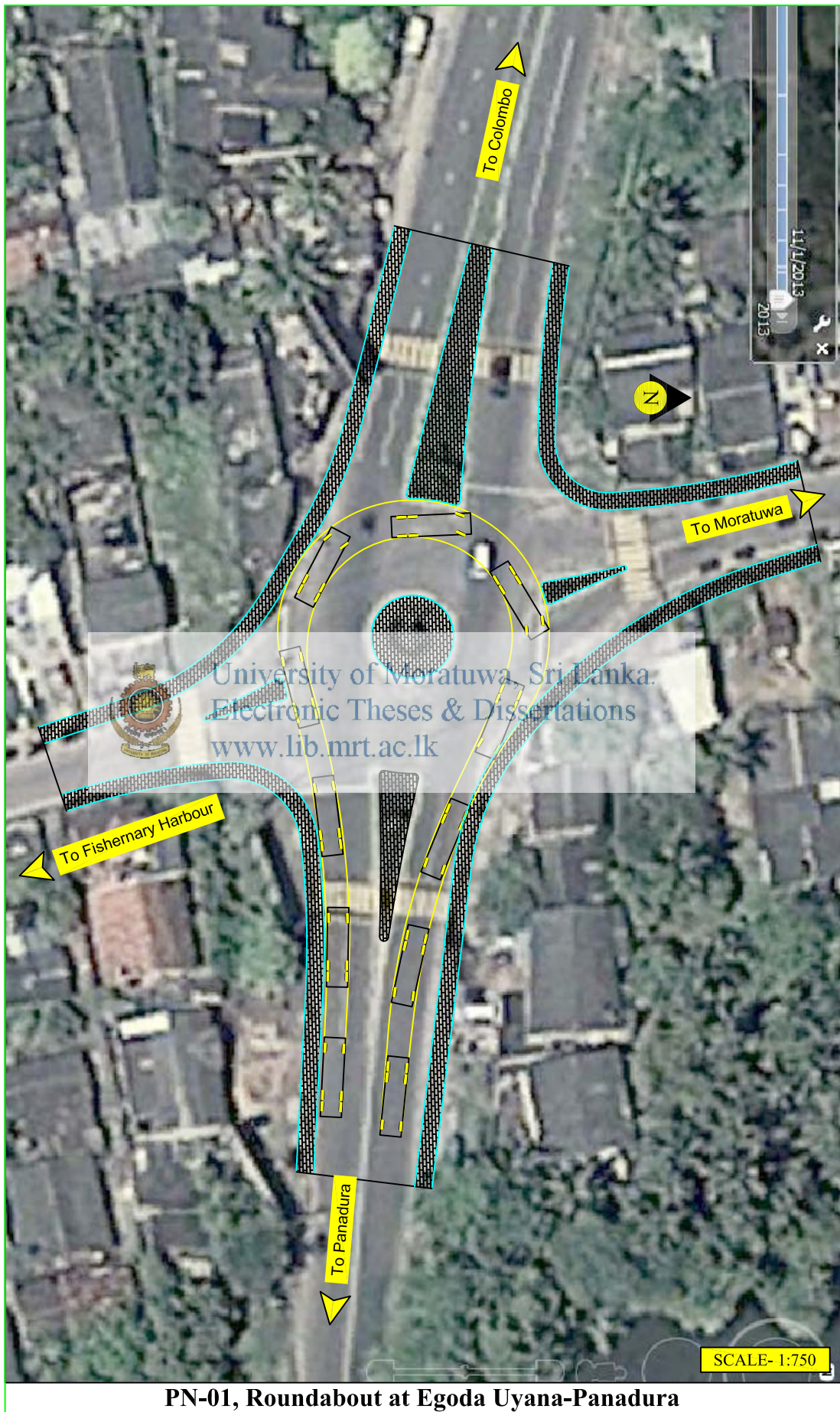


CO-05, Roundabout at Galle Face-Colombo

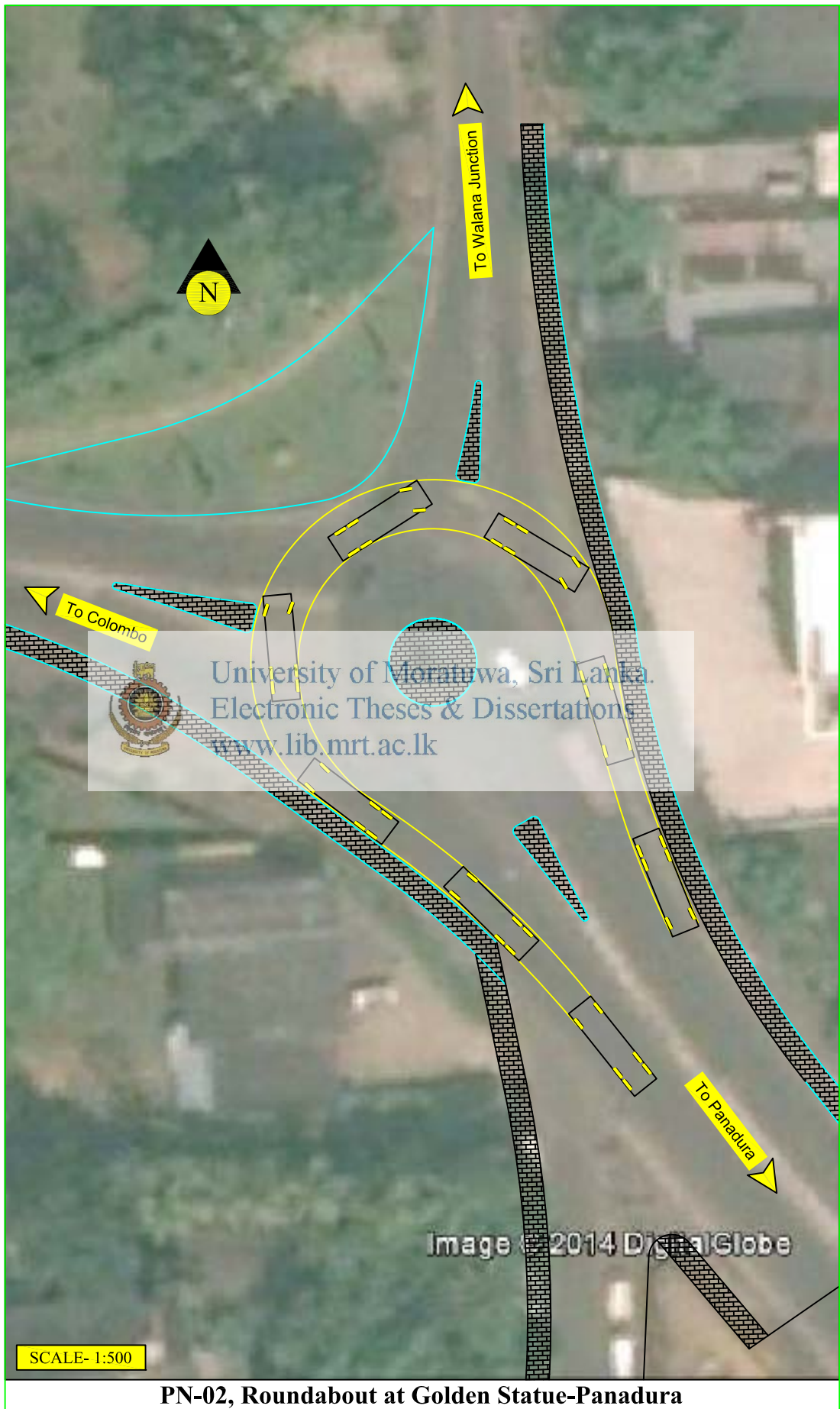


CO-06, Roundabout at Galadari Hotel-Colombo



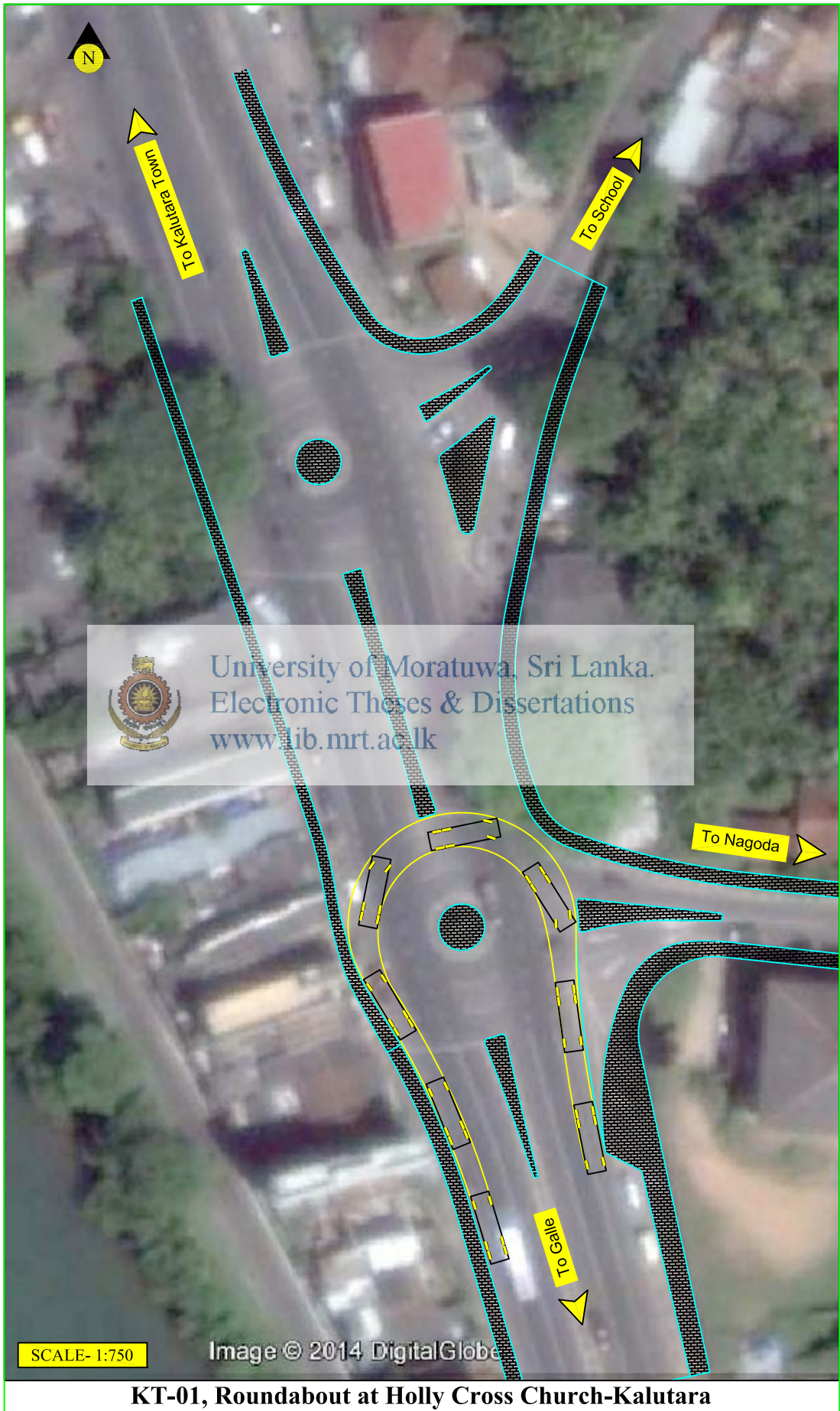


**PN-01, Roundabout at Egoda Uyana-Panadura**



**PN-02, Roundabout at Golden Statue-Panadura**







**GL-01, Roundabout at Vidyaloka School- Galle**





University of Moratuwa, Sri Lanka  
Electronic Theses & Dissertations  
[www.lib.mrt.ac.lk](http://www.lib.mrt.ac.lk)

SCALE- 1:750

GL-02, Roundabout at Police- Galle



SCALE- 1:500

**GL-03, Roundabout at Stadium- Galle**